

# Oklahoma County Overview



# Greater OKC Chamber – Economic Development

## **Core Functions**

- Business Attraction
- Business Retention
- Research & Data Support
- Aerospace
- Retail
- Life Science / Bioscience
- Film & Creative Industries

## **Greater Oklahoma City Partnership**

## **Special Initiatives**

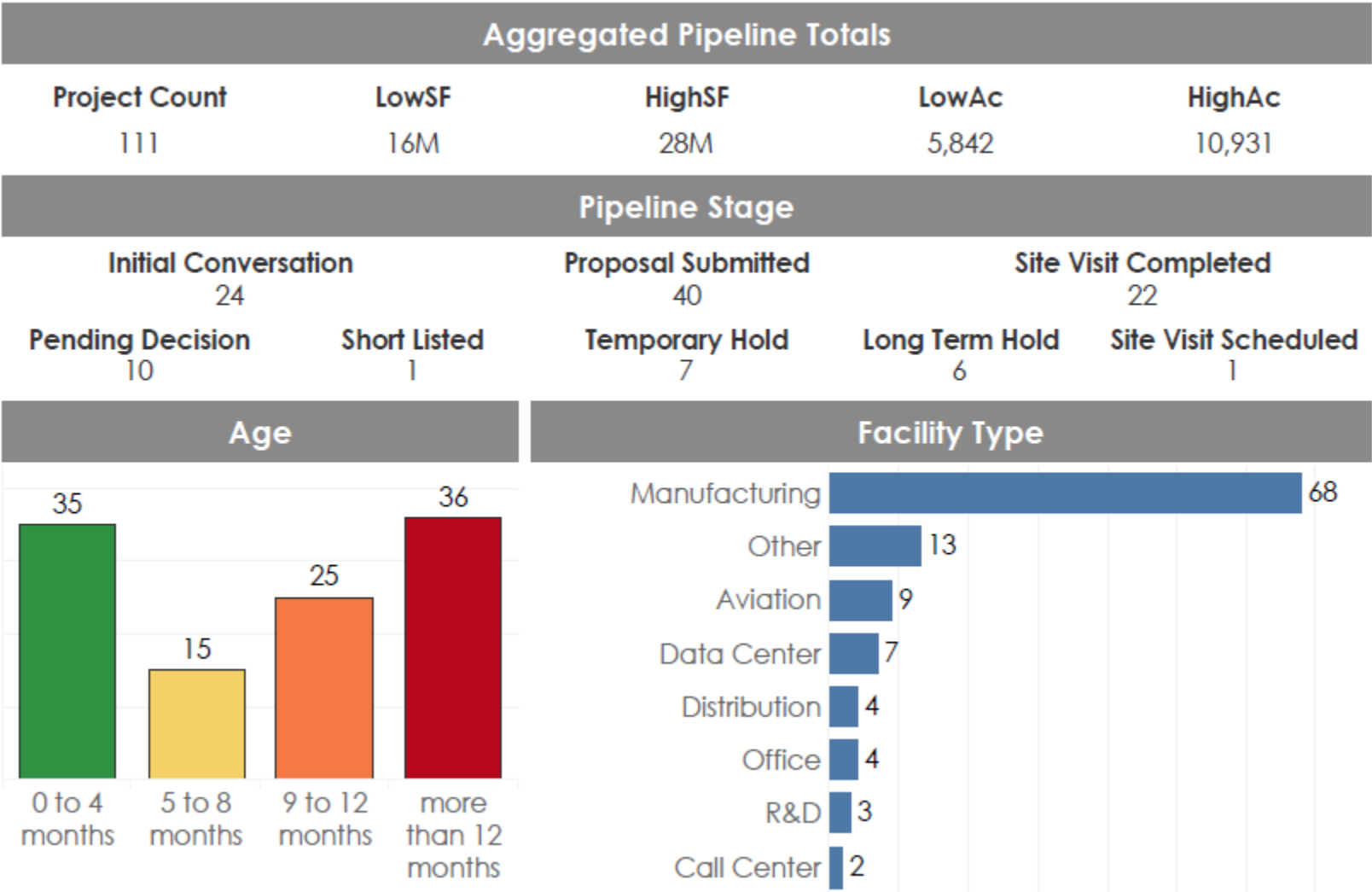
- REDI Site Plan (Retail, Entertainment, Development, Industrial)
- Workforce development
- Industry communication
- FDI/Exports



# May 2025 Active Pipeline

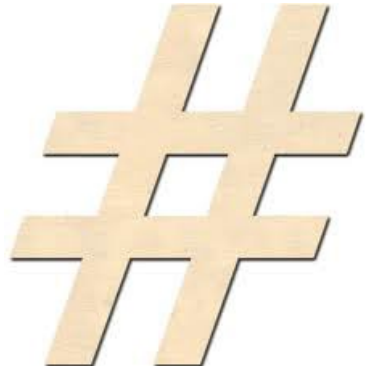


May 2025 Pipeline - Real Estate Update



# OK County Project Pipeline Deal Flow

## Last 12 Months (June 2024-May 2025)



**70+**  
**Projects**



**31,000+**  
**Jobs**



**\$17.5 Billion**  
**Capital**  
**Investment**



**\$1.4+ Billion**  
**Payroll**

# Chamber-Assisted Companies 2024 Oklahoma County

(Aggregated outcomes)



**4,000**  
**JOBS**

**\$290**  
**Million**  
**Payroll**



**\$484**  
**Million**  
**Capital**  
**Investment**

# Examples of Recent Oklahoma County Relocations and Expansions (2023-2025)



# New-to-market Companies in OK County (2020-2025)

Aerokool Aviation

Costco Member Service Center

Skydweller Aero, Inc.

Amazon

North Star Scientific Corporation

PurFoods

Liberty Dental Plan

Oklahoma Complete Health

Signify Health

Carvana

Consumer Cellular

Seeds 'n Snacks

Kroger

Hubbell, Inc.

Wilder Systems, Inc.

Consulate of Mexico in Dallas

Professional's Choice

Merhow

Sam's Club

Vortex Doors

MyDefence A/S

Averitt Express

Nintex

American Glass

Centrillium Protiens

# Announced Company Expansions in OK County

## (2020-2025)

Malarkey Roofing Products

Design Ready Controls

Jasco Products Co.

IDEX Energy - Advanced Flow Solutions

Linde Inc.

MD-Building Products

Dobson Technologies

Pratt & Whitney

Nortek Data Center Cooling

RedW Advisors & CPAs

EquipmentShare

American Tissue Industries



# Chamber Assisted Companies in OK County

## (2020-2025)

Lonestar  
City of Oklahoma City-Embark  
CFS Brands, LLC  
Hearts for Hearing  
Compellier  
Boardman LLC  
Dow Aero Logistics, LLC  
Long Wave Inc.  
Deleware Resource Group  
T&T Industrial  
CL Boyd-John Deere Construction Equipment  
Nestle Purina PetCare Company  
Dental Depot  
Enterprise Rent-A-Car  
Ernst & Young  
Analytical Research Laboratories  
Wheeler Bio  
Citgo Petroleum Corporation  
Scott Rice Workspace Solutions/NeXspaces  
Action Safety Supply Co.  
OMG Tooling Inc.  
You Version/Life Church  
Five Rivers Analytics  
Hobby Lobby Stores, Inc.  
Hartzog Conger Cason

Martin Bionics  
Harrison Energy Partner  
Vox Printing  
True Sky Credit Union  
The Climate Control Group  
Federal Corp  
Spiers New Technologies  
General Genomics  
Aerobrazo Engineered Technologies  
Ford Audio Video Systems  
Flintco, Inc.  
Pepsi Bottling Group of Oklahoma City  
The Professional Basketball Club LLC  
Amazon (OKC AGGREGATE)  
Global Energy Solutions  
Miller-Tippens Construction  
Alliance Steel, OKC  
Feed The Children  
T & T Industrial  
Foliart Huff Ottoway & Bottom  
Nortek Data Center Cooling  
Action Group Staffing  
Amshot Solutions  
Downing Wellhead Equipment, Inc.  
Phillips Murrah, PC

Warren CAT  
Waste Management  
Capital Distributing  
Progressive Stamping  
Medley Material Handling Company  
MyDefence  
McClarín Composites  
DRG  
CompSource Mutual Insurance Company  
Acts 29 Roofing  
AeroCore X  
Aar Aircraft Services  
W & W Steel Co.  
MHC Kenworth  
Pelco Inc.  
Locke Supply Co. Corporate Office  
The Morrison Group  
Aetna  
Malarkey Roofing Products  
FSB  
Waste Connections Inc.  
City of Oklahoma City- Embark  
Midwest Wrecking Co.  
CACI- Enterprise Services Center  
Goodwill Industries of Central Oklahoma

Paycom  
IDEX Energy- Advanced Flow Solutions  
O'Reilly Automotive  
Jetta Corporation  
KBR  
Quad Construction  
Pratt & Whitney  
Tonaquint  
Tribal Diagnostics  
Skydweller Aero Inc.  
Dura Coatings  
OMRF  
Love's Travel Shops & Country Stores  
FAA Mike Monroney Aeronautical Center  
Cintas  
ImageNet Consulting  
KiZE Concepts/ Bars  
Qualified Coating Services  
Creek CRE  
HP Engineering  
CarrierHawk  
Phase 2 Interactive  
Continental Resources  
Chesapeake Energy Corporation  
Kirby-Smith Machinery, Inc.

# Chamber Assisted Companies in OK County

## (2020-2025)

Topographic  
PACCAR Parts  
Heavy Equipment Colleges of America  
Boiling Point Media  
Reel Power International  
SJ Innovations  
Burns & McDonnell  
CARDS Recycling  
Diamondback Energy Services, LLC  
T-Mobile Customer Experience Center  
First United Bank  
Clean  
MDV  
Fuse3 Solutions  
Mosaic Personnel  
New View Oklahoma  
Mercy Health Center  
Integrus Health  
Titan & Grit Resources  
Dormakaba  
Irby Electric  
Vermeer Great Plains  
Sabre Industries  
W & W Steel Co.  
United Engines

Penske Truck Leasing  
Heartland Payment Systems  
Cavender Auto Group  
International Paper  
LSB Industries  
Solar Power of Oklahoma  
Seeds 'n Snacks, LLC  
Natuv Inc.  
Analytical Research Laboratories (ARL)  
Progentec Diagnostics  
Moleculera Labs  
INSURICA  
U.S. Foods  
UPS  
Vicinity Energy Oklahoma City Inc.  
Northrop Grumman - OKC  
Enel Greenpower North America, Inc.  
ReMerge  
Galvanic Energy, LLC  
City of Oklahoma City - EMBARK  
Collins Aerospace  
Guernsey Engineers Architects Consultants  
Consumer Cellular  
Qualified Coating Services  
American Precious Metals Exchange (APMEX)

Dynamic Gaming Solutions  
MSI Surfaces  
Electrical Solutions of Oklahoma  
Devon Industries  
UniFirst  
Ozarka Water & Coffee Service  
ALK OKC Allergy Supplies Inc.  
Goodwill Industries of Central Oklahoma  
Praxair Distribution Inc / Linde  
Centene  
IDEX Energy - Advanced Flow Solutions  
Smith & Nephew: Endoscopy  
Lingo Construction Services  
MidFirst Bank  
Quick Charge Corporation  
SimpleModern  
Dobson Technologies  
180 Medical  
Johnson & Associates, Inc.  
King's Worldwide Transportation  
OGE Energy Corp.  
Liberty Dental Plan of Oklahoma, Inc.  
Ben E. Keith Foods  
Oklahoma Blood Institute  
Sunbeam Family Services

Elara Caring  
Reno East LLC  
OFS  
Public Strategies  
Bakery Bling (Little Waisted)  
Medline Industries, Inc.  
Electro Enterprises  
Accenture  
FedEx Freight  
Ball, Morse and Lowe, PLLC  
YRC Freight  
Griffin Communications  
Waukesha-Pearce Industries, Inc.  
SafetySkills  
Lundy's Propane Gas Company  
Ignite Medical Resorts  
Arch Technology Solutions  
KAT Machine, Inc.  
Mathis Brothers  
Catholic Charities- Archdiocese of OKC  
GoFresh  
Stratus Surfaces  
Vesta Foundation Solutions  
Cosentino  
Ready 3

# Chamber Assisted Companies in OK County

## (2020-2025)

Associated Wholesale Grocers, Inc.

Tapstone Energy

Dolese Bros Co

Phoenix Design & Manufacturing

Scott Manufacturing, LLC

AGC Aerospace & Defense

Leader Communications Incorporated (LCI)

Tailwind

Manhattan Construction Company

ADG

Jasco Products Co.

C.H. Robinson Worldwide Inc.

Pepe Tools

HEBCO, Inc.

Devon Energy Corporation

Farmers Insurance Group

@ AtLink Services

Drov Technologies

HNTB

Kemper Health

Dell Technologies

TBS Factoring Services

TFCU Member Service Center

Taylor Valve Technology

Blue Cross Blue Shield of Oklahoma

Artisan Tile

Thru Tubing Solutions, Inc.

Flywheel Energy

Caliber Home Loans

Plexsys Interface Products Inc.

G4S Secure Solutions (USA) Inc.

Q.B. Johnson Manufacturing Inc.

Ellis Manufacturing

Lady Americana

Mnet Health

CEC Corporation

Metro Granite

AAA

Newview Oklahoma

Shurtech Brands

Hope Is Alive

Climate Master

The Boldt Company

E-Tailer Inc.

API Enterprises (Advance Polybag Inc.)

Kihomac, Inc.

CSL Plasma

MMR Constructors

Century Incorporated

M-D Building Products

Rexel

Valir Health

Kraft Tank OKC

HUNZICKER BROTHERS INC

Clubhouse Trailer Company

Bimbo Bakery

BancFirst

Crowe & Dunlevy

Caliber Completion Services, LLC

FuelUp

FedEx Unit 3 Ground

Kize Concepts

Pratt Industries USA

Closed Loop Recycling

Option One

Modern Influence

CMG Financial- Edmond Location

American Metals Supply Co., Inc.

Bison Technologies

BTMR Clothing & Manufacturing

Letica Corp

The Boeing Company

Western Industries Corp

Emkade

Amazon Delivery Center 2

Amazon Delivery Center 3

Echo Energy

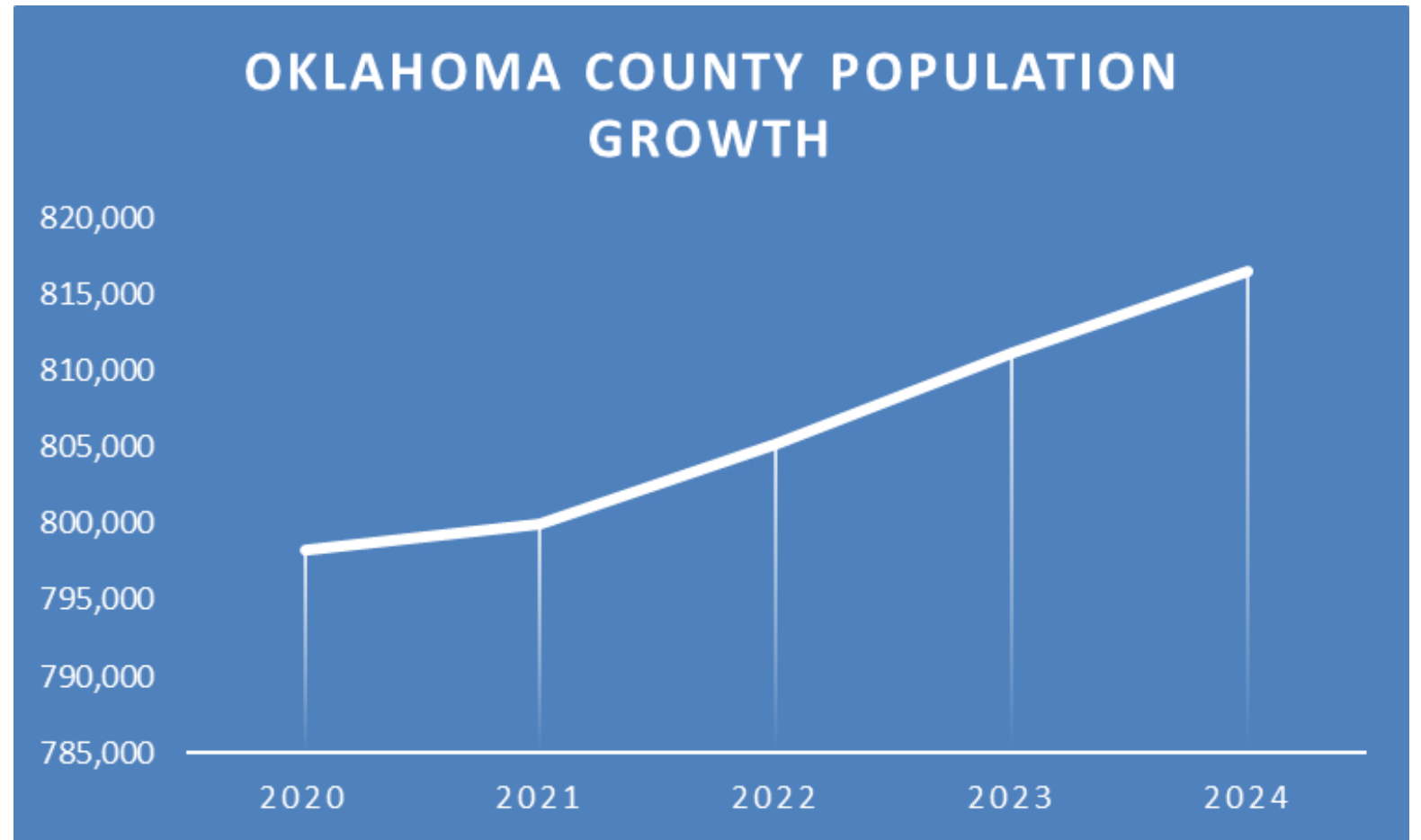
IngenuitE

MacArthur Associated Consultants

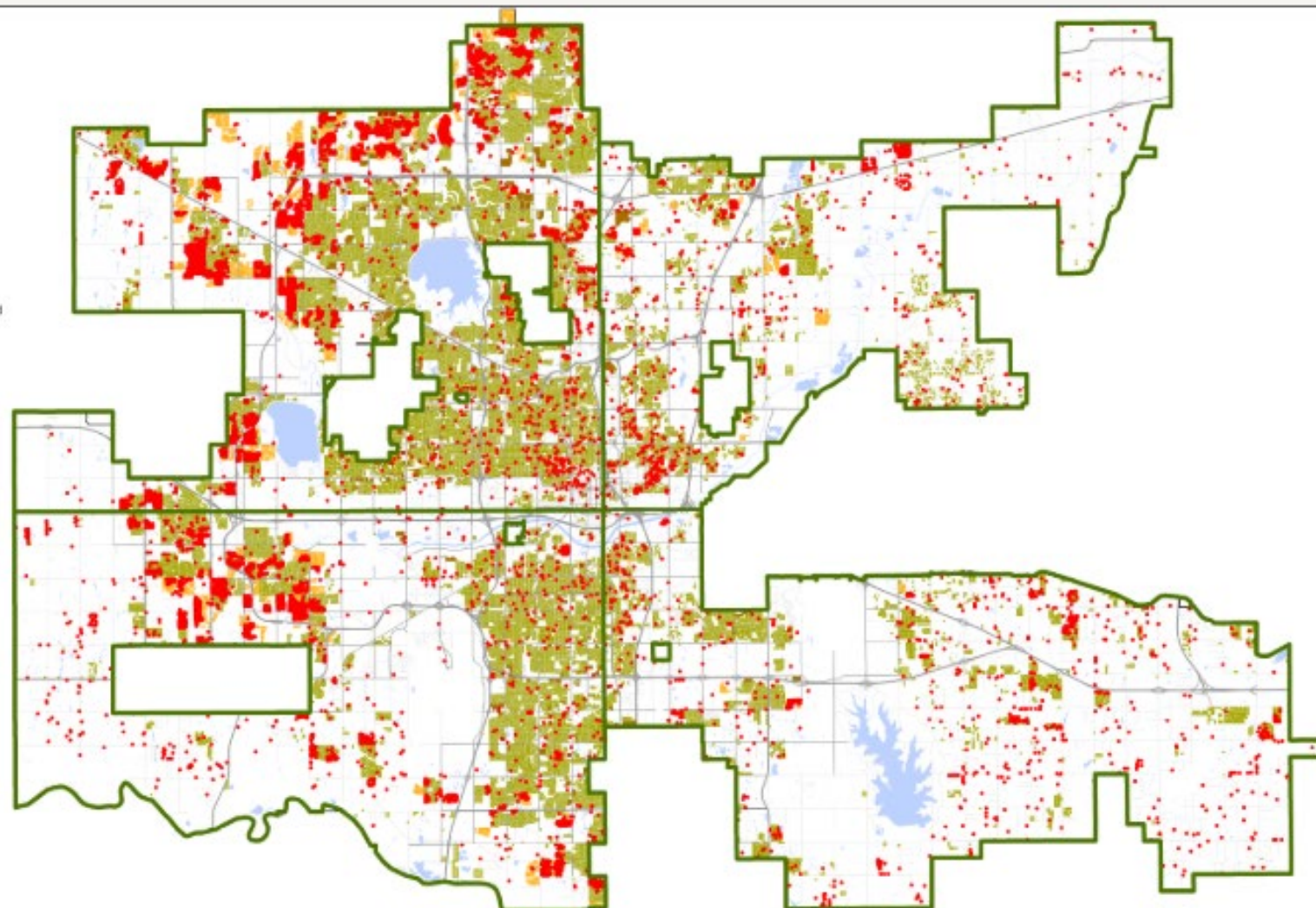
Blue Bell Creameries, L.P.

Xcel office Solutions

- 
- Oklahoma County grew by 2.3% or 18,207 people from 2020 to 2024
  - Oklahoma County added over 5,000 people in 2023



N. 192nd St  
N. 178th St  
N. 164th St  
N. 150th St  
Memorial Rd  
N. 122nd St  
Heiner Rd  
Britton Rd  
Wildshire Blvd  
N. 63rd St  
N. 50th St  
N. 36th St  
N. 23rd St  
N. 10th St  
Reno Ave  
S. 15th St  
S. 29th St  
S. 44th St  
S. 59th St  
S. 74th St  
S. 89th St  
S. 104th St  
S. 119th St  
S. 134th St  
S. 149th St  
S. 164th St  
S. 179th St



Gregory Rd  
Clinton Rd  
Richland Rd  
Frisco Rd  
Cemetery Rd  
Crest Hill Rd  
Piedmont Rd  
Mustang Rd  
Sato Rd  
Morgan Rd  
County Line Rd  
Council Rd  
Rockwell Ave  
MacArthur Blvd  
Meridian Ave  
Portland Ave  
May Ave  
Pennsylvania Ave  
Western Ave  
Santa Fe Ave  
High Ave  
Kelley Ave  
Eastern Ave  
M. L. King Ave  
Bryant Ave  
Sawyer Rd  
Cotnam Rd  
Souther Rd  
Air Depot Blvd  
Midwest Blvd  
Douglas Blvd  
Post Rd  
Westminster Rd  
Anderson Rd  
Hawes Rd  
Harney Rd  
Choctaw Rd  
Indian Meridian  
Triple X Rd  
Packy Rd  
Luther Rd  
Dobbs Rd  
Hans Rd  
Pottawatomie Rd  
Fishmarket Rd



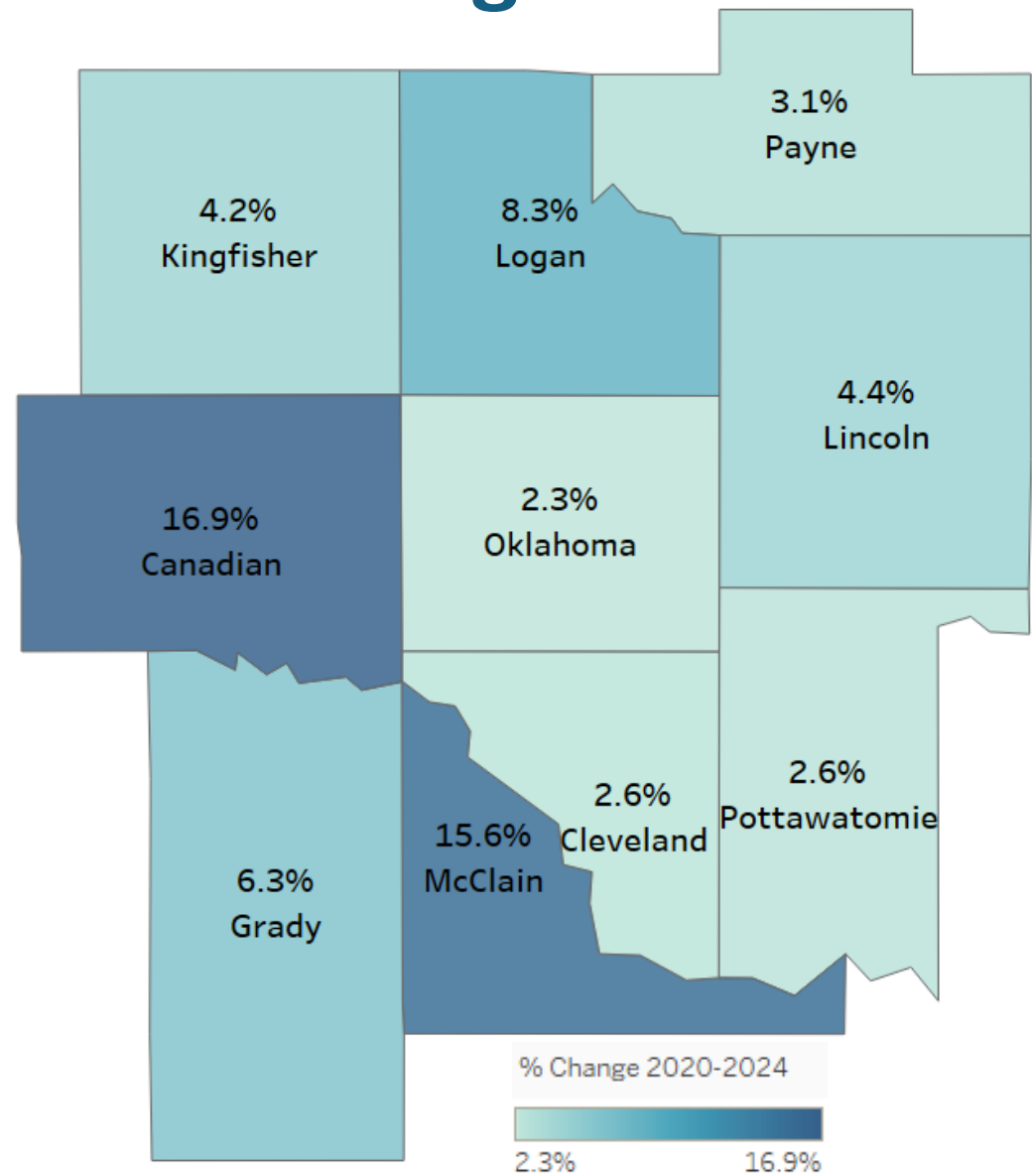
New Residential Construction Permits						
	2019	2020	2021	2022	2023	2024*
NW	2645	2232	2558	3180	2234	3590
NE	589	292	118	345	526	367
SW	819	1477	1102	1221	1186	1204
SE	216	569	146	323	110	205
<b>Total</b>	<b>4269</b>	<b>4570</b>	<b>3924</b>	<b>5069</b>	<b>4056</b>	<b>5766</b>

Existing Potential	NW	NE	SW	SE	Total
	206,413 27,166	27,811 1,295	91,690 7,518	26,462 429	352,375 36,400
City of Oklahoma City Existing and Potential Residential					





# The GOKC region added over 70,000 people from 2020-2024

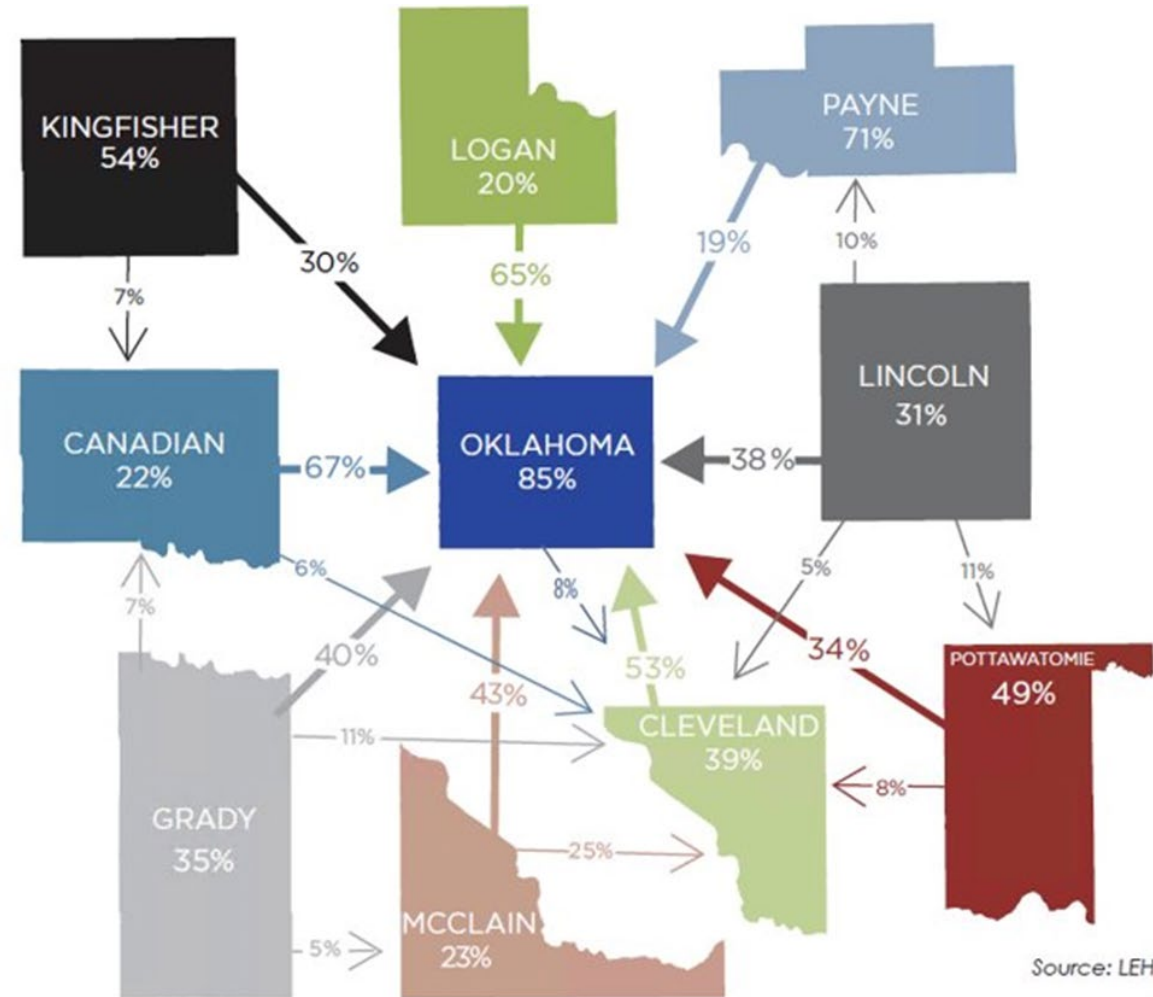


- 2 counties in Greater OKC Region enjoyed double digit growth since 2020
- All regional counties grew in population
- Region grew by 4.6% (nearly double the national average of 2.6%)

County	2020	2024	Growth	Percent Change
Canadian	155,445	181,760	26,315	16.9%
Cleveland	296,256	303,952	7,696	2.6%
Grady	54,884	58,353	3,469	6.3%
Kingfisher	15,177	15,820	643	4.2%
Lincoln	33,502	34,972	1,470	4.4%
Logan	49,752	53,860	4,108	8.3%
McClain	41,910	48,434	6,524	15.6%
Oklahoma	798,283	816,490	18,207	2.3%
Payne	81,649	84,199	2,550	3.1%
Pottawatomie	72,553	74,446	1,893	2.6%
Region Total	1,599,411	1,672,286	72,875	4.6%

# COMMUTING PATTERNS

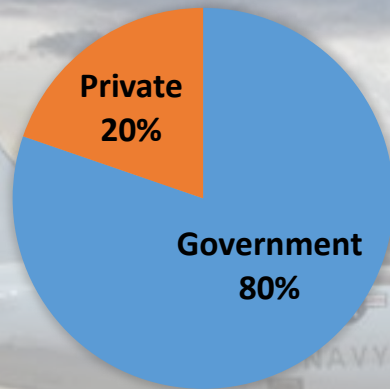
- The 850,000 people working in the region benefit from an easy commute.
- The 10 County Region Functions As A Single Labor Shed
- 50 miles is 50 minutes
- 1 in 3 people work in a county different from where they live
- 24-minute average commute



Note: This map shows the 10-county Partnership region and the commuting pattern between each county. The number listed within the county boundary is the percentage of residents who stay in their home county to work. The lines between counties show the percentage of residents who travel to other counties to work. For the purpose of clarity, only commuter flows of 5 percent and above are pictured. Also, for simplicity, the map nor percentage calculations includes commuting outside of the region.

# REGIONAL DEFENSE CLUSTER

## AEROSPACE INDUSTRY BY TYPE (EMPLOYMENT)



### Private Sector Aerospace Employment:

**Maintenance/Repair: 66%**

**Air Transportation: 23%**

**Manufacturing: 9%**

**Other: 2%**

## Local Aerospace Economy

339 Companies in Region

\$8.6 B in Goods and Services

45,000 Employees (Estimate)

## Select Major Defense Employers

**Tinker Air Force Base:** 27,000 Employees

**FAA Mike Monroney Center:** 5,100 Employees

**Boeing Aerospace:** 3,700 Employees

**Northrop Grumman:** 1,000 Employees

**Pratt & Whitney:** 500 Employees

**CACI:** 450 Employees

**AAR:** 350 Employees

**Field Aerospace:** 250 Employees

# Aerospace & Defense Industry Engagement & Support

## **Tinker AFB**

- MROTC Acquisition by the Air Force from Oklahoma Industries Authority (OIA)
- Support of modernization of engine test capabilities
- Advocating for 4-bay hangar to service B-52 and B-21
- Coordination with Oklahoma Strategic Military Planning Commission (OSMPC) to fund projects for Tinker AFB

## **Mike Monroney Aeronautical Center (MMAC)**

### **Aerospace Industry Growth (past 5 years)**

- Expansions and Recruitment
  - **65+** aerospace companies have been assisted through BRE efforts (26 of which have been supported over the last fiscal year)
  - **6** new-to-market company announcements

### **2025 Aerospace Industry Events**

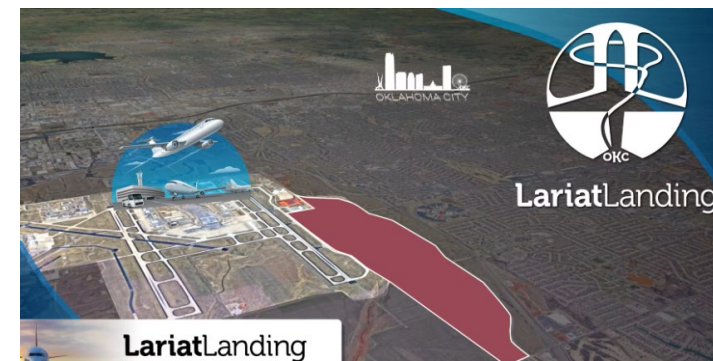
- Tinker & the Primes, MRO Americas, Xponential (AUVSI), Paris Air Show, NBAA, ACES Aerospace Week, Taipei Aerospace & Defense Technology Expo



# Development Opportunities / Assets

Current Select  
Sites/Property:

- Will Rogers/ Lariat Landing
- OKC 577
- Wiley Post
- Expand Campus
- Chisholm Creek





# Business Development & Engagement Activities

## Conferences/Forums



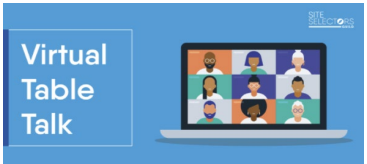
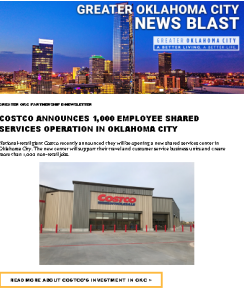
## Hosted Events



## Events in OKC



## eNewsletter & Virtual Engagement



## Direct Mail

