



JUSTICE BENEFITS, INC.

*Government Consulting Firm*  
1711 East Belt Line Rd.  
Coppell, TX 75019

Toll Free: (800) 835-2164  
Phone: (972) 406-3700

©2025 Justice Benefits, Inc.

*JB! Gets Results!*

**JUSTICE BENEFITS, INC.**  
JBI-LTD.COM

## Oklahoma County, Oklahoma

**FY2026 Consolidated Local Central Services**  
**2 CFR 200 Cost Allocation Plan and Indirect Cost Rate Proposal**

For

**The Fiscal Year Ending June 30, 2026**

(Based on actual expenditures of the Fiscal Year Ended June 30, 2024)



# ***OKLAHOMA COUNTY, OKLAHOMA***

## **FISCAL YEAR 2026 CONSOLIDATED LOCAL CENTRAL SERVICES OMB 2 CFR 200 COST ALLOCATION PLAN And INDIRECT COST RATE PROPOSAL Based on Fiscal Year 2024 Expenditures**

---

### **CERTIFICATION STATEMENT**

This is to certify that I have reviewed the cost plan submitted herewith and to the best of my knowledge and belief:

- (1) All costs (for the fiscal year ended June 30, 2024) included in this proposal dated December 15, 2025, to establish cost allocation or billings for the period of July 1, 2025 to June 30, 2026, are allowable in accordance with the requirements of OMB 2 CFR 200, "Cost Principles for State, Local, and Indian Tribal Governments," and the federal award(s) to which they apply. Unallowable costs have been accounted for in allocating costs as indicated in the cost allocation plan.
- (2) All costs included in this proposal are properly allocable to Federal awards on the basis of a beneficial or causal relationship between the expenses incurred and the awards to which they are allocated in accordance with applicable requirements. Further, the same costs that have been treated as indirect costs have not been claimed as direct costs. Similar types of costs have been accounted for consistently.

I declare that the foregoing is true and correct.

Oklahoma County, Oklahoma

Signature: \_\_\_\_\_

Maressa Treat  
Oklahoma County Clerk

Date of Execution: \_\_\_\_\_

---

### ***Indirect Cost Rate Calculation***

<b>Total Allowable Indirect Costs:</b>	<b><u>\$11,076,909</u></b>	<b>= 20.92% County-wide Indirect Cost Rate*</b>
<b>Total Operating Salaries and Wages:</b>	<b><u>\$52,950,762</u></b>	

*\*Indirect Cost Rate adjusted by Carry Forward*

### **Cost Allocation Plan and Indirect Cost Rate Proposal Methodology:**

Justice Benefits, Inc. compiles the Cost Allocation Plan and Indirect Cost Rate Proposal using the Simplified Method using an allocation base of salaries and wages. The following is an excerpt from 2 CFR 200, which explains the method.

#### *Simplified method*

*Where a grantee agency's major functions benefit from its indirect costs to approximately the same degree, the allocation of indirect costs may be accomplished by (1) classifying the grantee agency's total costs for the base period as either direct or indirect, and (2) dividing the total **allowable** [as per 2 CFR 200 guidelines] indirect costs (net of applicable credits) by an equitable distribution base. The result of this process is an indirect cost rate that is used to distribute indirect costs to individual Federal awards. The rate should be expressed as the percentage which the total amount of allowable indirect costs bears to the base selected.*

*b. Both the direct costs and the indirect costs shall exclude capital expenditures and unallowable costs.*

*c. The distribution base may be (1) total direct costs (excluding capital expenditures and other distorting items, such as pass-through funds, major subcontracts, etc.), (2) **direct salaries and wages**, or (3) another base which results in an equitable distribution.*

We feel that in the case of this county, the major functions of the county benefit from the central services costs in direct proportion to the personnel involved. Therefore, we have used direct salaries and benefits as our distribution base, as is suggested in 2 CFR 200. Furthermore, all Central Service allowable and unallowable costs have also been determined using 2 CFR 200, and are thus indicated in the Cost Allocation Plan.

Oklahoma County, Oklahoma OMB 2 CFR 200 Cost Allocation Plan and Indirect Cost Rate Proposal for FY2026  
(Based on Expenditures for FY2024 )

Fund	Fund Description	Dept	Department Description	Total	ICR %	Total Indirect Cost Allocation
1001	General Fund	1300	Assessor Regular	2,209,919.72	20.92%	462,298.93
1001	General Fund	1400	Assessor Revaluation	3,473,186.90	20.92%	726,565.12
1001	General Fund	1600	Court Clerk	7,963,725.23	20.92%	1,665,952.66
1001	General Fund	1800	Excise and Equalization Board	36,625.00	20.92%	7,661.68
1001	General Fund	2500	Election Board	1,271,695.41	20.92%	266,029.31
1001	General Fund	3010	Community Service	740,866.02	20.92%	154,983.71
1001	General Fund	5180	Sheriff Law Enforcement	9,948,098.69	20.92%	2,081,068.98
1001	General Fund	5250	Juvenile Justice Bureau	5,398,717.91	20.92%	1,129,372.02
1001	General Fund	5260	Juvenile Justice Bureau	1,677,153.59	20.92%	350,848.18
1001	General Fund	5500	Emergency Management	374,849.41	20.92%	78,415.74
1001	General Fund	6100	Social Services	896,909.00	20.92%	187,626.76
1001	General Fund	7100	Free Fair	4,900.00	20.92%	1,025.04
1001	General Fund	9100	District #1	312,671.99	20.92%	65,408.68
1001	General Fund	9200	District #2	188,520.42	20.92%	39,437.08
1001	General Fund	9300	District #3	224,520.22	20.92%	46,967.98
1001	General Fund	9400	Engineer	362,727.42	20.92%	75,879.90
1110	Highway Cash	9100	District #1	1,741,131.11	20.92%	364,231.80
1110	Highway Cash	9200	District #2	1,117,792.09	20.92%	233,833.87
1110	Highway Cash	9300	District #3	2,272,670.30	20.92%	475,425.89
1130	Resale Property-Budgeted	1130	Resale Property-Budgeted	2,063,136.25	20.92%	431,592.91
1150	County Clerk Lien Fee Fund	1150	County Clerk Lien Fee Fund	38,171.64	20.92%	7,985.23
1151	County Clerk's UCC Central Filing Fund	1151	County Clerk's UCC Central Filing	435,861.94	20.92%	91,179.11
1160	Sheriff Service Fee Fund	5000	Sheriff	2,476,755.78	20.92%	518,119.07
1160	Sheriff Service Fee Fund	5010	Courthouse Security Fee	177,850.76	20.92%	37,205.07
1161	Sheriff Grant Fund	5150	9-1-1	68,814.39	20.92%	14,395.46
1162	Sheriff Grant Fund	5050	OHSO Traffic Safety	192,435.53	20.92%	40,256.10
1233	Juvenile Grant Fund	1233	Juvenile Grant	132,341.19	20.92%	27,684.80
1280	Drug Court Fund	1280	Drug Court Fund	234,650.00	20.92%	49,087.05
1290	SHINE Program Fund	1290	SHINE Program Fund	181,629.94	20.92%	37,995.65
2010	Capital Improvement-Regular	2010	Capital Improvement-Regular	21,138.85	20.92%	4,422.09
5010	Defined Benefit	5010	Defined Benefit	1,240,219.43	20.92%	259,444.77
6050	Law Library	0001	Law Library	194,296.49	20.92%	40,645.39
6160	Public Defender Payroll	6160	Public Defender Payroll	4,986,571.42	20.92%	1,043,154.01
7030	PBA	7030	PBA	290,207.85	20.92%	60,709.34
<b>Grand Total</b>				<b>52,950,761.89</b>		<b>11,076,909.40</b>

Oklahoma County, Oklahoma OMB 2 CFR 200 Cost Allocation Plan and Indirect Cost Rate Proposal for FY2026  
(Based on Expenditures for FY2024 )

Fund	Fund Description	Dept.	Department Description	Acct	Account Description	CS/D	Amount	Salaries and Wages	Unallowable Costs	Central Service Costs
1001	General Fund	1100	General Government	51002	Part Time Salaries and Wages	CS	1,200.00		1,200.00	
1001	General Fund	1100	General Government	52010	FICA	CS	210.48		210.48	
1001	General Fund	1100	General Government	54011	Postage	CS	8,000.00			8,000.00
1001	General Fund	1100	General Government	54017	Memberships	CS	34,421.00		14,373.00	20,048.00
1001	General Fund	1100	General Government	54019	Premiums - Property Insurance	CS	1,305,842.00			1,305,842.00
1001	General Fund	1100	General Government	54020	Premiums - Other Insurance	CS	3,951.00			3,951.00
1001	General Fund	1100	General Government	54021	Telecommunications Services	CS	650.45		650.45	
1001	General Fund	1100	General Government	54022	Utilities - Gas	CS	16,107.69		16,107.69	
1001	General Fund	1100	General Government	54023	Utilities - Electric	CS	397,099.61		397,099.61	
1001	General Fund	1100	General Government	54024	Utilities - Sewer and Water	CS	61,142.89		61,142.89	
1001	General Fund	1100	General Government	54026	Utilities - Other	CS	583,440.80		583,440.80	
1001	General Fund	1100	General Government	54040	Publications	CS	35,999.70			35,999.70
1001	General Fund	1100	General Government	54045	Parking Fees	CS	3,480.00			3,480.00
1001	General Fund	1100	General Government	54048	Parking Transponder Deposit	CS	60.00			60.00
1001	General Fund	1100	General Government	54102	Office Space	CS	861,163.28			861,163.28
1001	General Fund	1100	General Government	54103	Building Space - Storage	CS	381,096.00			381,096.00
1001	General Fund	1100	General Government	54156	Bldg & Grounds-Maintenance	CS	1,758.00			1,758.00
1001	General Fund	1100	General Government	54157	Equipment - Vendors Maintenance	CS	386.66			386.66
1001	General Fund	1100	General Government	54451	Professional Services - Legal	CS	882,321.65		882,321.65	
1001	General Fund	1100	General Government	54455	Professional Services - Other	CS	35,064,632.26		34,505,826.00	558,806.26
1001	General Fund	1100	General Government	54456	Services Other	CS	30,044.04		21,444.04	8,600.00
1001	General Fund	1100	General Government	55390	Copier - Lease	CS	1,428.00			1,428.00
1001	General Fund	1200	County Commissioners	51001	Full Time Salaries and Wages	CS	518,891.28		518,891.28	
1001	General Fund	1200	County Commissioners	52010	FICA	CS	39,240.40			39,240.40
1001	General Fund	1200	County Commissioners	52032	Retirement - Department Defined Contribution	CS	62,266.89		62,266.89	
1001	General Fund	1200	County Commissioners	52045	Department - Health and Life Premiums	CS	77,260.00		77,260.00	
1001	General Fund	1200	County Commissioners	53010	Monthly Mileage/In State	CS	31,920.00		31,920.00	
1001	General Fund	1200	County Commissioners	54045	Parking Fees	CS	1,640.00		1,640.00	
1001	General Fund	1200	County Commissioners	54046	Cellular Telephone	CS	1,980.00		1,980.00	
1001	General Fund	1200	County Commissioners	54351	Office Supplies	CS	171.71		171.71	
1001	General Fund	1500	Treasurer	51001	Full Time Salaries and Wages	CS	615,634.30		135,087.50	480,546.80
1001	General Fund	1500	Treasurer	51003	Over Time Salaries and Wages	CS	57.12			57.12
1001	General Fund	1500	Treasurer	52010	FICA	CS	46,349.36		10,170.35	36,179.01
1001	General Fund	1500	Treasurer	52032	Retirement - Department Defined Contribution	CS	70,985.92		15,576.31	55,409.61
1001	General Fund	1500	Treasurer	52045	Department - Health and Life Premiums	CS	107,706.00		23,633.73	84,072.27
1001	General Fund	1500	Treasurer	53010	Monthly Mileage/In State	CS	9,600.00		9,600.00	
1001	General Fund	1500	Treasurer	54011	Postage	CS	41,054.85			41,054.85
1001	General Fund	1500	Treasurer	54012	Printing and Binding	CS	26,295.84			26,295.84
1001	General Fund	1500	Treasurer	54017	Memberships	CS	320.00			320.00
1001	General Fund	1500	Treasurer	54030	Subscriptions	CS	971.28			971.28
1001	General Fund	1500	Treasurer	54035	Bottled Water	CS	1,545.34			1,545.34
1001	General Fund	1500	Treasurer	54045	Parking Fees	CS	9,144.00			9,144.00
1001	General Fund	1500	Treasurer	54046	Cellular Telephone	CS	480.00		480.00	
1001	General Fund	1500	Treasurer	54351	Office Supplies	CS	4,189.50			4,189.50
1001	General Fund	1500	Treasurer	54455	Professional Services - Other	CS	4,348.46			4,348.46
1001	General Fund	1500	Treasurer	54459	Copier Charges	CS	89.58			89.58
1001	General Fund	1500	Treasurer	55390	Copier - Lease	CS	2,634.48			2,634.48
1001	General Fund	1700	County Clerk	51001	Full Time Salaries and Wages	CS	2,197,718.64		135,087.50	2,062,631.14
1001	General Fund	1700	County Clerk	51003	Over Time Salaries and Wages	CS	80.31			80.31
1001	General Fund	1700	County Clerk	52010	FICA	CS	162,409.47		9,982.85	152,426.62
1001	General Fund	1700	County Clerk	52032	Retirement - Department Defined Contribution	CS	251,478.16		15,457.65	236,020.51
1001	General Fund	1700	County Clerk	52040	Unemployment	CS	18,241.00		1,121.22	17,119.78
1001	General Fund	1700	County Clerk	52045	Department - Health and Life Premiums	CS	426,769.00		26,232.27	400,536.73
1001	General Fund	1700	County Clerk	53010	Monthly Mileage/In State	CS	9,600.00		9,600.00	
1001	General Fund	1700	County Clerk	53020	Mileage/In State	CS	2,455.96			2,455.96
1001	General Fund	1700	County Clerk	53030	Lodging/In State	CS	3,417.51			3,417.51
1001	General Fund	1700	County Clerk	53040	Meals/In State	CS	1,243.50			1,243.50
1001	General Fund	1700	County Clerk	53050	Car Rental/In State	CS	599.45			599.45
1001	General Fund	1700	County Clerk	53060	Registration Fees/In State	CS	3,619.00			3,619.00
1001	General Fund	1700	County Clerk	53070	Airfare/Out State	CS	2,768.50			2,768.50
1001	General Fund	1700	County Clerk	53080	Incidentals/In State	CS	260.49			260.49
1001	General Fund	1700	County Clerk	54011	Postage	CS	5,000.00			5,000.00
1001	General Fund	1700	County Clerk	54012	Printing and Binding	CS	4,894.46			4,894.46
1001	General Fund	1700	County Clerk	54016	License & Permit Fees	CS	485.00			485.00
1001	General Fund	1700	County Clerk	54017	Memberships	CS	2,169.00			2,169.00
1001	General Fund	1700	County Clerk	54028	Books	CS	199.00			199.00

Oklahoma County, Oklahoma OMB 2 CFR 200 Cost Allocation Plan and Indirect Cost Rate Proposal for FY2026  
(Based on Expenditures for FY2024 )

Fund	Fund Description	Dept.	Department Description	Acct	Account Description	CS/D	Amount	Salaries and Wages	Unallowable Costs	Central Service Costs
1001	General Fund	1700	County Clerk	54030	Subscriptions	CS	1,657.98			1,657.98
1001	General Fund	1700	County Clerk	54033	Freight and Storage	CS	193.55			193.55
1001	General Fund	1700	County Clerk	54035	Bottled Water	CS	1,923.33			1,923.33
1001	General Fund	1700	County Clerk	54040	Publications	CS	375.53			375.53
1001	General Fund	1700	County Clerk	54045	Parking Fees	CS	46,467.57			46,467.57
1001	General Fund	1700	County Clerk	54046	Cellular Telephone	CS	6,119.03		6,119.03	
1001	General Fund	1700	County Clerk	54048	Parking Transponder Deposit	CS	160.00			160.00
1001	General Fund	1700	County Clerk	54156	Building & Grounds - Vendors Maintenance	CS	280.56			280.56
1001	General Fund	1700	County Clerk	54157	Equipment - Vendors Maintenance	CS	10,149.61			10,149.61
1001	General Fund	1700	County Clerk	54302	Safety Supplies - Exiting Ammo etc.	CS	134.91		134.91	-
1001	General Fund	1700	County Clerk	54351	Office Supplies	CS	17,388.83			17,388.83
1001	General Fund	1700	County Clerk	54355	Paper	CS	2,794.38			2,794.38
1001	General Fund	1700	County Clerk	54455	Professional Services - Other	CS	11,386.00			11,386.00
1001	General Fund	1700	County Clerk	54456	Services Other	CS	110.00			110.00
1001	General Fund	1700	County Clerk	54458	Professional Services - Training & Education	CS	4,359.39			4,359.39
1001	General Fund	1700	County Clerk	55060	Building & Grounds - Repair/Parts/Maintenance	CS	913.25			913.25
1001	General Fund	1700	County Clerk	55095	Computer Software	CS	8,650.16			8,650.16
1001	General Fund	1700	County Clerk	55100	Furniture	CS	5,053.24			5,053.24
1001	General Fund	1700	County Clerk	55390	Copier - Lease	CS	970.97			970.97
1001	General Fund	1900	County Audit	54035	Bottled Water	CS	226.68			226.68
1001	General Fund	1900	County Audit	54045	Parking Fees	CS	12,558.00			12,558.00
1001	General Fund	1900	County Audit	54102	Office Space	CS	16,415.25			16,415.25
1001	General Fund	1900	County Audit	54157	Equipment - Vendors Maintenance	CS	450.31			450.31
1001	General Fund	1900	County Audit	54452	Professional Services - Auditing & Accounting	CS	300,772.16			300,772.16
1001	General Fund	1900	County Audit	55390	Copier - Lease	CS	1,315.28			1,315.28
1001	General Fund	2400	Purchasing	51001	Full Time Salaries and Wages	CS	80,172.55			80,172.55
1001	General Fund	2400	Purchasing	52010	FICA	CS	5,713.56			5,713.56
1001	General Fund	2400	Purchasing	52032	Retirement - Department Defined Contribution	CS	9,620.71			9,620.71
1001	General Fund	2400	Purchasing	52045	Department - Health and Life Premiums	CS	20,718.00			20,718.00
1001	General Fund	2400	Purchasing	53020	Mileage/In State	CS	82.80			82.80
1001	General Fund	2400	Purchasing	53060	Registration Fees/In State	CS	279.00			279.00
1001	General Fund	2400	Purchasing	54013	Advertising	CS	200.00			200.00
1001	General Fund	2400	Purchasing	54021	Telecommunications Services	CS	1,288.80			1,288.80
1001	General Fund	2400	Purchasing	54030	Subscriptions	CS	1,299.00			1,299.00
1001	General Fund	2400	Purchasing	54035	Bottled Water	CS	47.92			47.92
1001	General Fund	2400	Purchasing	54040	Publications	CS	350.87			350.87
1001	General Fund	2400	Purchasing	54045	Parking Fees	CS	2,584.00			2,584.00
1001	General Fund	2400	Purchasing	54351	Office Supplies	CS	374.23			374.23
1001	General Fund	2400	Purchasing	54459	Copier Charges	CS	317.03			317.03
1001	General Fund	2400	Purchasing	55095	Computer Software	CS	63.50			63.50
1001	General Fund	2400	Purchasing	55390	Copier - Lease	CS	554.84			554.84
1001	General Fund	2600	BOCC HR/Health and Safety	51001	Full Time Salaries and Wages	CS	285,176.71			285,176.71
1001	General Fund	2600	BOCC HR/Health and Safety	51003	Over Time Salaries and Wages	CS	130.22			130.22
1001	General Fund	2600	BOCC HR/Health and Safety	52010	FICA	CS	21,227.00			21,227.00
1001	General Fund	2600	BOCC HR/Health and Safety	52032	Retirement - Department Defined Contribution	CS	30,393.33			30,393.33
1001	General Fund	2600	BOCC HR/Health and Safety	52045	Department - Health and Life Premiums	CS	39,207.00			39,207.00
1001	General Fund	2600	BOCC HR/Health and Safety	53020	Mileage/In State	CS	896.96			896.96
1001	General Fund	2600	BOCC HR/Health and Safety	53060	Registration Fees/In State	CS	350.00			350.00
1001	General Fund	2600	BOCC HR/Health and Safety	54013	Advertising	CS	96.00			96.00
1001	General Fund	2600	BOCC HR/Health and Safety	54016	License & Permit Fees	CS	93.00			93.00
1001	General Fund	2600	BOCC HR/Health and Safety	54017	Memberships	CS	499.00			499.00
1001	General Fund	2600	BOCC HR/Health and Safety	54030	Subscriptions	CS	97.00			97.00
1001	General Fund	2600	BOCC HR/Health and Safety	54031	Premiums & Awards	CS	237.46			237.46
1001	General Fund	2600	BOCC HR/Health and Safety	54035	Bottled Water	CS	203.66			203.66
1001	General Fund	2600	BOCC HR/Health and Safety	54045	Parking Fees	CS	8,052.00			8,052.00
1001	General Fund	2600	BOCC HR/Health and Safety	54046	Cellular Telephone	CS	2,631.44		2,631.44	
1001	General Fund	2600	BOCC HR/Health and Safety	54205	Training Supplies	CS	4,116.01			4,116.01
1001	General Fund	2600	BOCC HR/Health and Safety	54211	Motor Vehicle Fuel - Unleaded	CS	165.91			165.91
1001	General Fund	2600	BOCC HR/Health and Safety	54301	Uniform and Wearing Apparel	CS	1,450.53			1,450.53
1001	General Fund	2600	BOCC HR/Health and Safety	54302	Safety Supplies - Exiting Ammo etc.	CS	2,208.64		2,208.64	
1001	General Fund	2600	BOCC HR/Health and Safety	54351	Office Supplies	CS	5,123.23			5,123.23
1001	General Fund	2600	BOCC HR/Health and Safety	54455	Professional Services - Other	CS	3,168.00			3,168.00
1001	General Fund	2600	BOCC HR/Health and Safety	54458	Professional Services - Training & Education	CS	1,091.55			1,091.55
1001	General Fund	2600	BOCC HR/Health and Safety	54459	Copier Charges	CS	153.49			153.49
1001	General Fund	2600	BOCC HR/Health and Safety	55080	Computer Equipment - Purchases	CS	10,332.18			10,332.18
1001	General Fund	2600	BOCC HR/Health and Safety	55250	Safety Equipment	CS	10,909.92			10,909.92

Oklahoma County, Oklahoma OMB 2 CFR 200 Cost Allocation Plan and Indirect Cost Rate Proposal for FY2026  
(Based on Expenditures for FY2024 )

Fund	Fund Description	Dept.	Department Description	Acct	Account Description	CS/D	Amount	Salaries and Wages	Unallowable Costs	Central Service Costs
1001	General Fund	2600	BOCC HR/Health and Safety	55390	Copier - Lease	CS	1,538.28			1,538.28
1001	General Fund	2650	Employee Benefits Department	51001	Full Time Salaries and Wages	CS	291,873.16			291,873.16
1001	General Fund	2650	Employee Benefits Department	52010	FICA	CS	21,082.04			21,082.04
1001	General Fund	2650	Employee Benefits Department	52032	Retirement - Department Defined Contribution	CS	34,376.75			34,376.75
1001	General Fund	2650	Employee Benefits Department	52045	Department - Health and Life Premiums	CS	72,396.00			72,396.00
1001	General Fund	2650	Employee Benefits Department	54035	Bottled Water	CS	222.75			222.75
1001	General Fund	2650	Employee Benefits Department	54045	Parking Fees	CS	3,576.00			3,576.00
1001	General Fund	2650	Employee Benefits Department	54046	Cellular Telephone	CS	2,160.00		2,160.00	
1001	General Fund	2650	Employee Benefits Department	54109	Equipment - Other	CS	62.99			62.99
1001	General Fund	2650	Employee Benefits Department	54157	Equipment - Vendors Maintenance	CS	1,287.58			1,287.58
1001	General Fund	2650	Employee Benefits Department	54351	Office Supplies	CS	1,052.31			1,052.31
1001	General Fund	2650	Employee Benefits Department	55390	Copier - Lease	CS	1,257.36			1,257.36
1001	General Fund	2700	Information and Technology	51001	Full Time Salaries and Wages	CS	1,600,442.63			1,600,442.63
1001	General Fund	2700	Information and Technology	52010	FICA	CS	117,377.57			117,377.57
1001	General Fund	2700	Information and Technology	52032	Retirement - Department Defined Contribution	CS	191,813.13			191,813.13
1001	General Fund	2700	Information and Technology	52040	Unemployment	CS	4,416.00			4,416.00
1001	General Fund	2700	Information and Technology	52045	Department - Health and Life Premiums	CS	386,331.00			386,331.00
1001	General Fund	2700	Information and Technology	53030	Lodging/In State	CS	1,611.09			1,611.09
1001	General Fund	2700	Information and Technology	53040	Meals/In State	CS	621.00			621.00
1001	General Fund	2700	Information and Technology	53050	Car Rental/In State	CS	359.28			359.28
1001	General Fund	2700	Information and Technology	53070	Airfare/Out State	CS	1,743.16			1,743.16
1001	General Fund	2700	Information and Technology	53090	Parking	CS	105.00			105.00
1001	General Fund	2700	Information and Technology	54021	Telecommunications Services	CS	18,630.42			18,630.42
1001	General Fund	2700	Information and Technology	54025	Utilities - Telephone	CS	323,695.35			323,695.35
1001	General Fund	2700	Information and Technology	54026	Utilities - Other	CS	202,090.01			202,090.01
1001	General Fund	2700	Information and Technology	54030	Subscriptions	CS	301,127.55			301,127.55
1001	General Fund	2700	Information and Technology	54035	Bottled Water	CS	353.41			353.41
1001	General Fund	2700	Information and Technology	54045	Parking Fees	CS	26,316.00			26,316.00
1001	General Fund	2700	Information and Technology	54046	Cellular Telephone	CS	19,584.00		19,584.00	
1001	General Fund	2700	Information and Technology	54112	Software as a Service - SAAS	CS	794,378.62			794,378.62
1001	General Fund	2700	Information and Technology	54113	Software Annual License Renew	CS	490,226.12			490,226.12
1001	General Fund	2700	Information and Technology	54151	Building & Grounds - Maintenance Supplies	CS	106.44			106.44
1001	General Fund	2700	Information and Technology	54154	Computer/Copier Supplies	CS	17.77			17.77
1001	General Fund	2700	Information and Technology	54157	Equipment - Vendors Maintenance	CS	43,538.50			43,538.50
1001	General Fund	2700	Information and Technology	54161	Building & Grounds - Vendors Repairs	CS	960.00			960.00
1001	General Fund	2700	Information and Technology	54351	Office Supplies	CS	1,072.25			1,072.25
1001	General Fund	2700	Information and Technology	54455	Professional Services - Other	CS	3,927.65			3,927.65
1001	General Fund	2700	Information and Technology	54456	Services Other	CS	422.50			422.50
1001	General Fund	2700	Information and Technology	54458	Professional Services - Training & Education	CS	6,680.48			6,680.48
1001	General Fund	2700	Information and Technology	54459	Copier Charges	CS	177.09			177.09
1001	General Fund	2700	Information and Technology	55080	Computer Equipment - Purchases	CS	111,021.93		8,299.19	102,722.74
1001	General Fund	2700	Information and Technology	55090	Computer Equipment - Repair Parts	CS	4,711.74			4,711.74
1001	General Fund	2700	Information and Technology	55095	Computer Software	CS	166,077.27		44,170.00	121,907.27
1001	General Fund	2700	Information and Technology	55110	Office Equipment - Purchase	CS	465.98			465.98
1001	General Fund	2700	Information and Technology	55200	Telecommunications Equipment	CS	6,833.47			6,833.47
1001	General Fund	2700	Information and Technology	55390	Copier - Lease	CS	1,512.60			1,512.60
1001	General Fund	2800	Facilities Management - Courthouse	51001	Full Time Salaries and Wages	CS	952,914.87			952,914.87
1001	General Fund	2800	Facilities Management - Courthouse	51002	Part Time Salaries and Wages	CS	10,000.00			10,000.00
1001	General Fund	2800	Facilities Management - Courthouse	51003	Over Time Salaries and Wages	CS	1,021.92			1,021.92
1001	General Fund	2800	Facilities Management - Courthouse	52010	FICA	CS	69,838.38			69,838.38
1001	General Fund	2800	Facilities Management - Courthouse	52032	Retirement - Department Defined Contribution	CS	109,322.38			109,322.38
1001	General Fund	2800	Facilities Management - Courthouse	52045	Department - Health and Life Premiums	CS	286,685.00			286,685.00
1001	General Fund	2800	Facilities Management - Courthouse	54016	License & Permit Fees	CS	1,493.00			1,493.00
1001	General Fund	2800	Facilities Management - Courthouse	54030	Subscriptions	CS	921.49			921.49
1001	General Fund	2800	Facilities Management - Courthouse	54033	Freight and Storage	CS	275.00			275.00
1001	General Fund	2800	Facilities Management - Courthouse	54045	Parking Fees	CS	28,105.60			28,105.60
1001	General Fund	2800	Facilities Management - Courthouse	54046	Cellular Telephone	CS	16,548.08		16,548.08	
1001	General Fund	2800	Facilities Management - Courthouse	54048	Parking Transponder Deposit	CS	180.00			180.00
1001	General Fund	2800	Facilities Management - Courthouse	54109	Equipment - Other	CS	9,237.63			9,237.63
1001	General Fund	2800	Facilities Management - Courthouse	54151	Building & Grounds - Maintenance Supplies	CS	21,201.00			21,201.00
1001	General Fund	2800	Facilities Management - Courthouse	54152	Building & Grounds - Repair Supplies	CS	13,081.40			13,081.40
1001	General Fund	2800	Facilities Management - Courthouse	54153	Equipment Supplies	CS	871.04			871.04
1001	General Fund	2800	Facilities Management - Courthouse	54155	Telecommunications - Repair Supplies In House	CS	3,608.52			3,608.52
1001	General Fund	2800	Facilities Management - Courthouse	54156	Bldg & Grounds-Maintenance	CS	117,686.21			117,686.21
1001	General Fund	2800	Facilities Management - Courthouse	54161	Building & Grounds - Vendors Repairs	CS	65,290.34			65,290.34
1001	General Fund	2800	Facilities Management - Courthouse	54162	Equipment - Vendors Repair	CS	44,478.32			44,478.32

Oklahoma County, Oklahoma OMB 2 CFR 200 Cost Allocation Plan and Indirect Cost Rate Proposal for FY2026  
(Based on Expenditures for FY2024 )

Fund	Fund Description	Dept.	Department Description	Acct	Account Description	CS/D	Amount	Salaries and Wages	Unallowable Costs	Central Service Costs
1001	General Fund	2800	Facilities Management - Courthouse	54165	Vehicle - Vendors Repair	CS	1,796.72			1,796.72
1001	General Fund	2800	Facilities Management - Courthouse	54201	Food	CS	2,100.00			2,100.00
1001	General Fund	2800	Facilities Management - Courthouse	54211	Motor Vehicle Fuel - Unleaded	CS	8,984.87			8,984.87
1001	General Fund	2800	Facilities Management - Courthouse	54212	Motor Vehicle Fuel - Diesel	CS	620.55			620.55
1001	General Fund	2800	Facilities Management - Courthouse	54222	Miscellaneous Supplies	CS	1,469.76			1,469.76
1001	General Fund	2800	Facilities Management - Courthouse	54301	Uniform and Wearing Apparel	CS	6,856.90			6,856.90
1001	General Fund	2800	Facilities Management - Courthouse	54302	Safety Supplies - Exiting Ammo etc.	CS	4,010.92		4,010.92	
1001	General Fund	2800	Facilities Management - Courthouse	54351	Office Supplies	CS	384.29			384.29
1001	General Fund	2800	Facilities Management - Courthouse	54401	Motor Vehicle Supplies	CS	450.74		450.74	
1001	General Fund	2800	Facilities Management - Courthouse	54453	Professional Services - Medical	CS	204.00		204.00	
1001	General Fund	2800	Facilities Management - Courthouse	54455	Professional Services - Other	CS	15,420.48			15,420.48
1001	General Fund	2800	Facilities Management - Courthouse	54456	Services Other	CS	12,307.11			12,307.11
1001	General Fund	2800	Facilities Management - Courthouse	54458	Professional Services - Training & Education	CS	2,001.00			2,001.00
1001	General Fund	2800	Facilities Management - Courthouse	54459	Copier Charges	CS	609.29			609.29
1001	General Fund	2800	Facilities Management - Courthouse	55060	Building & Grounds - Repair/Parts/Maintenance	CS	22,442.62			22,442.62
1001	General Fund	2800	Facilities Management - Courthouse	55070	Building & Grounds - Fixtures/Permanent	CS	10,929.67			10,929.67
1001	General Fund	2800	Facilities Management - Courthouse	55230	Shop Equipment	CS	2,599.96			2,599.96
1001	General Fund	2800	Facilities Management - Courthouse	55250	Safety Equipment	CS	1,703.96			1,703.96
1001	General Fund	2800	Facilities Management - Courthouse	55330	Other Equipment	CS	46,323.80			46,323.80
1001	General Fund	2800	Facilities Management - Courthouse	55390	Copier - Lease	CS	2,182.08			2,182.08
1001	General Fund	2850	Facilities Management Cust-Off Build	54156	Bldg & Grounds-Maintenance	CS	237,316.60			237,316.60
1001	General Fund	2850	Facilities Management Cust-Off Build	54218	Janitorial Supplies	CS	72,056.25			72,056.25
1001	General Fund	3000	Planning Commission	51001	Full Time Salaries and Wages	CS	188,061.26		188,061.26	
1001	General Fund	3000	Planning Commission	52010	FICA	CS	13,920.10			13,920.10
1001	General Fund	3000	Planning Commission	52032	Retirement - Department Defined Contribution	CS	22,507.35			22,507.35
1001	General Fund	3000	Planning Commission	52045	Department - Health and Life Premiums	CS	34,608.00			34,608.00
1001	General Fund	3000	Planning Commission	54046	Cellular Telephone	CS	1,440.00			1,440.00
1152	County Clerk's Records Management and Preservation Fund	1152	County Clerk's Records Management and Preservation	51001	Full Time Salaries and Wages	CS	924,983.87			924,983.87
1152	County Clerk's Records Management and Preservation Fund	1152	County Clerk's Records Management and Preservation	51003	Over Time Salaries and Wages	CS	74.32			74.32
1152	County Clerk's Records Management and Preservation Fund	1152	County Clerk's Records Management and Preservation	52010	FICA	CS	67,336.77			67,336.77
1152	County Clerk's Records Management and Preservation Fund	1152	County Clerk's Records Management and Preservation	52032	Retirement - Department Defined Contribution	CS	106,684.90			106,684.90
1152	County Clerk's Records Management and Preservation Fund	1152	County Clerk's Records Management and Preservation	52045	Department - Health and Life Premiums	CS	251,360.00			251,360.00
1152	County Clerk's Records Management and Preservation Fund	1152	County Clerk's Records Management and Preservation	54112	Software as a Service - SAAS	CS	55,831.87			55,831.87
1152	County Clerk's Records Management and Preservation Fund	1152	County Clerk's Records Management and Preservation	54157	Equipment - Vendors Maintenance	CS	149,811.74			149,811.74
1152	County Clerk's Records Management and Preservation Fund	1152	County Clerk's Records Management and Preservation	54455	Professional Services - Other	CS	22,414.00			22,414.00
1152	County Clerk's Records Management and Preservation Fund	1152	County Clerk's Records Management and Preservation	54456	Services Other	CS	7,000.00			7,000.00
1152	County Clerk's Records Management and Preservation Fund	1152	County Clerk's Records Management and Preservation	55380	Office Equipment - Lease	CS	6,079.74			6,079.74
1240	Planning Commission Fee Fund	1240	Planning Commission Fee	51001	Full Time Salaries and Wages	CS	182,121.24		182,121.24	
1240	Planning Commission Fee Fund	1240	Planning Commission Fee	51002	Part Time Salaries and Wages	CS	39,058.20			39,058.20
1240	Planning Commission Fee Fund	1240	Planning Commission Fee	52010	FICA	CS	16,245.90			16,245.90
1240	Planning Commission Fee Fund	1240	Planning Commission Fee	52032	Retirement - Department Defined Contribution	CS	21,722.56			21,722.56
1240	Planning Commission Fee Fund	1240	Planning Commission Fee	52045	Department - Health and Life Premiums	CS	45,084.00			45,084.00
1240	Planning Commission Fee Fund	1240	Planning Commission Fee	53020	Mileage/In State	CS	31,658.30			31,658.30
1240	Planning Commission Fee Fund	1240	Planning Commission Fee	53030	Lodging/In State	CS	410.22			410.22
1240	Planning Commission Fee Fund	1240	Planning Commission Fee	53040	Meals/In State	CS	206.50			206.50
1240	Planning Commission Fee Fund	1240	Planning Commission Fee	53060	Registration Fees/In State	CS	79.00			79.00
1240	Planning Commission Fee Fund	1240	Planning Commission Fee	54012	Printing and Binding	CS	1,212.50			1,212.50
1240	Planning Commission Fee Fund	1240	Planning Commission Fee	54016	License & Permit Fees	CS	106.00			106.00
1240	Planning Commission Fee Fund	1240	Planning Commission Fee	54040	Publications	CS	7,048.86			7,048.86
1240	Planning Commission Fee Fund	1240	Planning Commission Fee	54045	Parking Fees	CS	7,752.00			7,752.00
1240	Planning Commission Fee Fund	1240	Planning Commission Fee	54046	Cellular Telephone	CS	3,960.00			3,960.00
1240	Planning Commission Fee Fund	1240	Planning Commission Fee	54113	Software Annual License Renew	CS	1,174.78			1,174.78
1240	Planning Commission Fee Fund	1240	Planning Commission Fee	54351	Office Supplies	CS	4,966.95			4,966.95
1240	Planning Commission Fee Fund	1240	Planning Commission Fee	54459	Copier Charges	CS	678.05			678.05
1240	Planning Commission Fee Fund	1240	Planning Commission Fee	55250	Safety Equipment	CS	134.95			134.95
1240	Planning Commission Fee Fund	1240	Planning Commission Fee	55390	Copier - Lease	CS	2,519.34			2,519.34
4010	Employee Benefits	4010	Employee Benefits	54455	Professional Services - Other	CS	103,983.04			103,983.04
4010	Employee Benefits	4010	Employee Benefits	54504	Life Insurance Admin fees	CS	2,204,914.41			2,204,914.41
4010	Employee Benefits	4010	Employee Benefits	54505	Vision Care Admin Fees	CS	28,200.32			28,200.32
4010	Employee Benefits	4010	Employee Benefits	54507	Cafeteria Plan Admin Fees	CS	4,188.00			4,188.00
4010	Employee Benefits	4010	Employee Benefits	54521	Medical Claims	CS	18,699,231.77		18,699,231.77	
4010	Employee Benefits	4010	Employee Benefits	54522	Prescription Drug Claims	CS	11,410,195.76		11,410,195.76	
4010	Employee Benefits	4010	Employee Benefits	54523	County Pharmacy Claims	CS	195,051.83			195,051.83
4010	Employee Benefits	4010	Employee Benefits	54524	Vision Claims	CS	191,624.71			191,624.71
4010	Employee Benefits	4010	Employee Benefits	54525	Dental Claims	CS	1,632,336.72			1,632,336.72
4010	Employee Benefits	4010	Employee Benefits	54529	Medical - Other	CS	268,237.93			268,237.93



Oklahoma County, Oklahoma OMB 2 CFR 200 Cost Allocation Plan and Indirect Cost Rate Proposal for FY2026  
(Based on Expenditures for FY2024 )

Fund	Fund Description	Dept.	Department Description	Acct	Account Description	CS/D	Amount	Salaries and Wages	Unallowable Costs	Central Service Costs
4010	Employee Benefits	4010	Employee Benefits	54544	Medicare Supplement Premiums	CS	1,476,527.20		1,476,527.20	
4020	Worker's Compensation	4020	Worker's Compensation	54020	Premiums - Other Insurance	CS	187,236.00			187,236.00
4020	Worker's Compensation	4020	Worker's Compensation	54452	Professional Services - Auditing & Accounting	CS	3,500.00			3,500.00
4020	Worker's Compensation	4020	Worker's Compensation	54502	Workers Compensation Admin Expense	CS	54,166.71			54,166.71
4020	Worker's Compensation	4020	Worker's Compensation	54531	Workers Compensation Claims	CS	265,716.72			265,716.72
4020	Worker's Compensation	4020	Worker's Compensation	54532	Workers Compensation Other	CS	14,128.65			14,128.65
4030	Self-Insurance	4030	Self-Insurance	54541	Self-Insurance Settlements	CS	21,500.00		21,500.00	
4030	Self-Insurance	4030	Self-Insurance	54542	Supportive Services	CS	212,578.67			212,578.67
1001	General Fund	1300	Assessor Regular	51001	Full Time Salaries and Wages	D	2,183,619.72	2,183,619.72		
1001	General Fund	1300	Assessor Regular	51002	Part Time Salaries and Wages	D	26,300.00	26,300.00		
1001	General Fund	1300	Assessor Regular	52010	FICA	D	163,402.81			
1001	General Fund	1300	Assessor Regular	52032	Retirement - Department Defined Contribution	D	255,816.59			
1001	General Fund	1300	Assessor Regular	52040	Unemployment	D	2,580.00			
1001	General Fund	1300	Assessor Regular	52045	Department - Health and Life Premiums	D	477,216.00			
1001	General Fund	1300	Assessor Regular	53010	Monthly Mileage/In State	D	11,096.52			
1001	General Fund	1300	Assessor Regular	53020	Mileage/In State	D	4,350.71			
1001	General Fund	1300	Assessor Regular	53030	Lodging/In State	D	7,305.79			
1001	General Fund	1300	Assessor Regular	53040	Meals/In State	D	4,670.00			
1001	General Fund	1300	Assessor Regular	53041	Taxable Meals without Overnight Stay	D	10.86			
1001	General Fund	1300	Assessor Regular	53060	Registration Fees/In State	D	5,477.00			
1001	General Fund	1300	Assessor Regular	53070	Airfare/Out State	D	569.19			
1001	General Fund	1300	Assessor Regular	53080	Incidentals/In State	D	48.55			
1001	General Fund	1300	Assessor Regular	54011	Postage	D	125,000.00			
1001	General Fund	1300	Assessor Regular	54012	Printing and Binding	D	10,895.25			
1001	General Fund	1300	Assessor Regular	54017	Memberships	D	3,640.00			
1001	General Fund	1300	Assessor Regular	54030	Subscriptions	D	1,084.80			
1001	General Fund	1300	Assessor Regular	54033	Freight and Storage	D	24.50			
1001	General Fund	1300	Assessor Regular	54045	Parking Fees	D	39,555.00			
1001	General Fund	1300	Assessor Regular	54046	Cellular Telephone	D	4,320.00			
1001	General Fund	1300	Assessor Regular	54157	Equipment - Vendors Maintenance	D	14,461.49			
1001	General Fund	1300	Assessor Regular	54351	Office Supplies	D	10,487.86			
1001	General Fund	1300	Assessor Regular	54456	Services Other	D	218,297.24			
1001	General Fund	1300	Assessor Regular	54459	Copier Charges	D	2,937.99			
1001	General Fund	1300	Assessor Regular	55080	Computer Equipment - Purchases	D	16,420.41			
1001	General Fund	1300	Assessor Regular	55095	Computer Software	D	17,233.76			
1001	General Fund	1300	Assessor Regular	55100	Furniture	D	2,059.03			
1001	General Fund	1300	Assessor Regular	55110	Office Equipment - Purchase	D	2,696.86			
1001	General Fund	1300	Assessor Regular	55380	Office Equipment - Lease	D	3,992.40			
1001	General Fund	1300	Assessor Regular	55390	Copier - Lease	D	2,446.08			
1001	General Fund	1400	Assessor Revaluation	51001	Full Time Salaries and Wages	D	3,451,675.84	3,451,675.84		
1001	General Fund	1400	Assessor Revaluation	51002	Part Time Salaries and Wages	D	21,511.06	21,511.06		
1001	General Fund	1400	Assessor Revaluation	52010	FICA	D	254,024.89			
1001	General Fund	1400	Assessor Revaluation	52032	Retirement - Department Defined Contribution	D	398,358.54			
1001	General Fund	1400	Assessor Revaluation	52045	Department - Health and Life Premiums	D	839,836.00			
1001	General Fund	1400	Assessor Revaluation	53010	Monthly Mileage/In State	D	77,203.92			
1001	General Fund	1400	Assessor Revaluation	53020	Mileage/In State	D	5,568.62			
1001	General Fund	1400	Assessor Revaluation	53030	Lodging/In State	D	20,578.44			
1001	General Fund	1400	Assessor Revaluation	53040	Meals/In State	D	5,723.00			
1001	General Fund	1400	Assessor Revaluation	53041	Taxable Meals without Overnight Stay	D	115.06			
1001	General Fund	1400	Assessor Revaluation	53050	Car Rental/In State	D	2,537.18			
1001	General Fund	1400	Assessor Revaluation	53060	Registration Fees/In State	D	17,664.70			
1001	General Fund	1400	Assessor Revaluation	53080	Incidentals/In State	D	563.85			
1001	General Fund	1400	Assessor Revaluation	54011	Postage	D	150,000.00			
1001	General Fund	1400	Assessor Revaluation	54012	Printing and Binding	D	25,739.58			
1001	General Fund	1400	Assessor Revaluation	54017	Memberships	D	5,795.00			
1001	General Fund	1400	Assessor Revaluation	54030	Subscriptions	D	1,046.90			
1001	General Fund	1400	Assessor Revaluation	54033	Freight and Storage	D	62.86			
1001	General Fund	1400	Assessor Revaluation	54045	Parking Fees	D	60,658.83			
1001	General Fund	1400	Assessor Revaluation	54046	Cellular Telephone	D	23,070.58			
1001	General Fund	1400	Assessor Revaluation	54048	Parking Transponder Deposit	D	100.00			
1001	General Fund	1400	Assessor Revaluation	54112	Software as a Service - SAAS	D	11,406.31			
1001	General Fund	1400	Assessor Revaluation	54113	Software Annual License Renew	D	15,755.96			
1001	General Fund	1400	Assessor Revaluation	54157	Equipment - Vendors Maintenance	D	9,231.46			
1001	General Fund	1400	Assessor Revaluation	54351	Office Supplies	D	8,512.67			
1001	General Fund	1400	Assessor Revaluation	54455	Professional Services - Other	D	666,716.82			
1001	General Fund	1400	Assessor Revaluation	54456	Services Other	D	126,517.66			

Oklahoma County, Oklahoma OMB 2 CFR 200 Cost Allocation Plan and Indirect Cost Rate Proposal for FY2026  
(Based on Expenditures for FY2024 )

Fund	Fund Description	Dept.	Department Description	Acct	Account Description	CS/D	Amount	Salaries and Wages	Unallowable Costs	Central Service Costs
1001	General Fund	1400	Assessor Revaluation	54459	Copier Charges	D	4,238.30			
1001	General Fund	1400	Assessor Revaluation	55080	Computer Equipment - Purchases	D	12,673.62			
1001	General Fund	1400	Assessor Revaluation	55095	Computer Software	D	20,008.56			
1001	General Fund	1400	Assessor Revaluation	55100	Furniture	D	1,340.50			
1001	General Fund	1400	Assessor Revaluation	55110	Office Equipment - Purchase	D	1,773.83			
1001	General Fund	1400	Assessor Revaluation	55390	Copier - Lease	D	4,857.84			
1001	General Fund	1600	Court Clerk	51001	Full Time Salaries and Wages	D	7,916,164.50	7,916,164.50		
1001	General Fund	1600	Court Clerk	51002	Part Time Salaries and Wages	D	47,560.61	47,560.61		
1001	General Fund	1600	Court Clerk	51003	Over Time Salaries and Wages	D	0.12	0.12		
1001	General Fund	1600	Court Clerk	52010	FICA	D	583,589.24			
1001	General Fund	1600	Court Clerk	52031	Retirement - Department Defined Benefit	D	11,415.56			
1001	General Fund	1600	Court Clerk	52032	Retirement - Department Defined Contribution	D	908,967.75			
1001	General Fund	1600	Court Clerk	52040	Unemployment	D	7,964.29			
1001	General Fund	1600	Court Clerk	52045	Department - Health and Life Premiums	D	1,962,540.00			
1001	General Fund	1600	Court Clerk	53010	Monthly Mileage/In State	D	9,600.00			
1001	General Fund	1600	Court Clerk	53020	Mileage/In State	D	959.87			
1001	General Fund	1600	Court Clerk	54030	Subscriptions	D	15,468.14			
1001	General Fund	1600	Court Clerk	54045	Parking Fees	D	145,135.30			
1001	General Fund	1600	Court Clerk	54046	Cellular Telephone	D	6,450.00			
1001	General Fund	1600	Court Clerk	54048	Parking Transponder Deposit	D	120.00			
1001	General Fund	1600	Court Clerk	54222	Miscellaneous Supplies	D	676.03			
1001	General Fund	1600	Court Clerk	54301	Uniform and Wearing Apparel	D	539.80			
1001	General Fund	1600	Court Clerk	54351	Office Supplies	D	164.86			
1001	General Fund	1600	Court Clerk	54454	Professional Services - A and E	D	16,851.94			
1001	General Fund	1800	Excise and Equalization Board	51002	Part Time Salaries and Wages	D	36,625.00	36,625.00		
1001	General Fund	1800	Excise and Equalization Board	52010	FICA	D	2,801.87			
1001	General Fund	1800	Excise and Equalization Board	53020	Mileage/In State	D	2,584.69			
1001	General Fund	1800	Excise and Equalization Board	54040	Publications	D	699.45			
1001	General Fund	2000	District Attorney - State	54011	Postage	D	35,000.00			
1001	General Fund	2000	District Attorney - State	54012	Printing and Binding	D	2,411.00			
1001	General Fund	2000	District Attorney - State	54017	Memberships	D	9,100.00			
1001	General Fund	2000	District Attorney - State	54033	Freight and Storage	D	34,224.29			
1001	General Fund	2000	District Attorney - State	54040	Publications	D	38.20			
1001	General Fund	2000	District Attorney - State	54045	Parking Fees	D	109,894.36			
1001	General Fund	2000	District Attorney - State	54048	Parking Transponder Deposit	D	40.00			
1001	General Fund	2000	District Attorney - State	54157	Equipment - Vendors Maintenance	D	1,605.00			
1001	General Fund	2000	District Attorney - State	54211	Motor Vehicle Fuel - Unleaded	D	11,159.21			
1001	General Fund	2000	District Attorney - State	54212	Motor Vehicle Fuel - Diesel	D	8,500.00			
1001	General Fund	2000	District Attorney - State	54351	Office Supplies	D	35,830.04			
1001	General Fund	2000	District Attorney - State	54355	Paper	D	11,292.54			
1001	General Fund	2000	District Attorney - State	54455	Professional Services - Other	D	22,087.18			
1001	General Fund	2000	District Attorney - State	54459	Copier Charges	D	8,206.19			
1001	General Fund	2000	District Attorney - State	54545	Lapel Pins	D	545.00			
1001	General Fund	2000	District Attorney - State	54550	Service Plaques	D	40.00			
1001	General Fund	2000	District Attorney - State	55080	Computer Equipment - Purchases	D	274.78			
1001	General Fund	2000	District Attorney - State	55100	Furniture	D	3,287.37			
1001	General Fund	2000	District Attorney - State	55110	Office Equipment - Purchase	D	163.55			
1001	General Fund	2000	District Attorney - State	55115	Office-Doors	D	541.59			
1001	General Fund	2000	District Attorney - State	55125	Curtain & Curtain Rods	D	194.28			
1001	General Fund	2000	District Attorney - State	55220	Law Enforcement Equipment	D	1,089.07			
1001	General Fund	2000	District Attorney - State	55330	Other Equipment	D	455.17			
1001	General Fund	2000	District Attorney - State	55380	Office Equipment - Lease	D	2,971.08			
1001	General Fund	2000	District Attorney - State	55390	Copier - Lease	D	18,946.08			
1001	General Fund	2100	District Attorney - County	54033	Freight and Storage	D	1,018.36			
1001	General Fund	2100	District Attorney - County	54040	Publications	D	52,933.78			
1001	General Fund	2100	District Attorney - County	54455	Professional Services - Other	D	17,239.00			
1001	General Fund	2100	District Attorney - County	54459	Copier Charges	D	1,561.20			
1001	General Fund	2100	District Attorney - County	55390	Copier - Lease	D	5,091.60			
1001	General Fund	2300	Public Defender	53020	Mileage/In State	D	591.44			
1001	General Fund	2300	Public Defender	53030	Lodging/In State	D	860.72			
1001	General Fund	2300	Public Defender	53040	Meals/In State	D	336.00			
1001	General Fund	2300	Public Defender	53060	Registration Fees/In State	D	350.00			
1001	General Fund	2300	Public Defender	54011	Postage	D	1,830.00			
1001	General Fund	2300	Public Defender	54012	Printing and Binding	D	480.00			
1001	General Fund	2300	Public Defender	54028	Books	D	11,369.00			
1001	General Fund	2300	Public Defender	54033	Freight and Storage	D	204.45			

Oklahoma County, Oklahoma OMB 2 CFR 200 Cost Allocation Plan and Indirect Cost Rate Proposal for FY2026  
(Based on Expenditures for FY2024 )

Fund	Fund Description	Dept.	Department Description	Acct	Account Description	CS/D	Amount	Salaries and Wages	Unallowable Costs	Central Service Costs
1001	General Fund	2300	Public Defender	54045	Parking Fees	D	4,675.00			
1001	General Fund	2300	Public Defender	54048	Parking Transponder Deposit	D	20.00			
1001	General Fund	2300	Public Defender	54106	Equipment-Software	D	75.58			
1001	General Fund	2300	Public Defender	54109	Equipment - Other	D	177.77			
1001	General Fund	2300	Public Defender	54160	Vehicle - Vendors Maintenance	D	1,443.15			
1001	General Fund	2300	Public Defender	54165	Vehicle - Vendors Repair	D	229.55			
1001	General Fund	2300	Public Defender	54351	Office Supplies	D	15,275.62			
1001	General Fund	2300	Public Defender	54355	Paper	D	4,144.88			
1001	General Fund	2300	Public Defender	54456	Services Other	D	1,346.68			
1001	General Fund	2300	Public Defender	54459	Copier Charges	D	1,207.81			
1001	General Fund	2300	Public Defender	55080	Computer Equipment - Purchases	D	5,129.95			
1001	General Fund	2300	Public Defender	55100	Furniture	D	2,112.38			
1001	General Fund	2300	Public Defender	55110	Office Equipment - Purchase	D	1,269.99			
1001	General Fund	2300	Public Defender	55390	Copier - Lease	D	4,640.49			
1001	General Fund	2500	Election Board	51001	Full Time Salaries and Wages	D	925,447.85	925,447.85		
1001	General Fund	2500	Election Board	51002	Part Time Salaries and Wages	D	306,719.30	306,719.30		
1001	General Fund	2500	Election Board	51003	Over Time Salaries and Wages	D	39,528.26	39,528.26		
1001	General Fund	2500	Election Board	52010	FICA	D	93,258.62			
1001	General Fund	2500	Election Board	52032	Retirement - Department Defined Contribution	D	106,844.31			
1001	General Fund	2500	Election Board	52045	Department - Health and Life Premiums	D	234,321.00			
1001	General Fund	2500	Election Board	53020	Mileage/In State	D	10,297.31			
1001	General Fund	2500	Election Board	54011	Postage	D	80,000.00			
1001	General Fund	2500	Election Board	54012	Printing and Binding	D	28,970.00			
1001	General Fund	2500	Election Board	54045	Parking Fees	D	3,576.00			
1001	General Fund	2500	Election Board	54046	Cellular Telephone	D	24,222.65			
1001	General Fund	2500	Election Board	54102	Office Space	D	5,511.39			
1001	General Fund	2500	Election Board	54109	Equipment - Other	D	8,277.66			
1001	General Fund	2500	Election Board	54157	Equipment - Vendors Maintenance	D	3,926.30			
1001	General Fund	2500	Election Board	54162	Equipment - Vendors Repair	D	4,025.03			
1001	General Fund	2500	Election Board	54219	Election Supplies	D	5,046.01			
1001	General Fund	2500	Election Board	54222	Miscellaneous Supplies	D	34,021.72			
1001	General Fund	2500	Election Board	54404	Truck Rental	D	42,945.72			
1001	General Fund	2500	Election Board	54459	Copier Charges	D	6,994.44			
1001	General Fund	2500	Election Board	55390	Copier - Lease	D	5,070.72			
1001	General Fund	3010	Community Service	51001	Full Time Salaries and Wages	D	738,931.05	738,931.05		
1001	General Fund	3010	Community Service	51003	Over Time Salaries and Wages	D	1,934.97	1,934.97		
1001	General Fund	3010	Community Service	52010	FICA	D	53,412.64			
1001	General Fund	3010	Community Service	52032	Retirement - Department Defined Contribution	D	87,557.48			
1001	General Fund	3010	Community Service	52045	Department - Health and Life Premiums	D	234,851.00			
1001	General Fund	3010	Community Service	54046	Cellular Telephone	D	2,040.00			
1001	General Fund	5180	Sheriff Law Enforcement	51001	Full Time Salaries and Wages	D	9,912,975.76	9,912,975.76		
1001	General Fund	5180	Sheriff Law Enforcement	51003	Over Time Salaries and Wages	D	35,122.93	35,122.93		
1001	General Fund	5180	Sheriff Law Enforcement	52010	FICA	D	720,831.24			
1001	General Fund	5180	Sheriff Law Enforcement	52032	Retirement - Department Defined Contribution	D	1,167,826.91			
1001	General Fund	5180	Sheriff Law Enforcement	52040	Unemployment	D	1,668.00			
1001	General Fund	5180	Sheriff Law Enforcement	52045	Department - Health and Life Premiums	D	2,922,128.00			
1001	General Fund	5180	Sheriff Law Enforcement	54029	Transportation	D	88,946.32			
1001	General Fund	5180	Sheriff Law Enforcement	54046	Cellular Telephone	D	1,080.00			
1001	General Fund	5180	Sheriff Law Enforcement	54211	Motor Vehicle Fuel - Unleaded	D	358,208.09			
1001	General Fund	5180	Sheriff Law Enforcement	54456	Services Other	D	32,725.48			
1001	General Fund	5250	Juvenile Detention	51001	Full Time Salaries and Wages	D	5,366,499.66	5,366,499.66		
1001	General Fund	5250	Juvenile Detention	51002	Part Time Salaries and Wages	D	29,799.54	29,799.54		
1001	General Fund	5250	Juvenile Detention	51003	Over Time Salaries and Wages	D	2,418.71	2,418.71		
1001	General Fund	5250	Juvenile Detention	52010	FICA	D	392,467.07			
1001	General Fund	5250	Juvenile Detention	52032	Retirement - Department Defined Contribution	D	589,642.48			
1001	General Fund	5250	Juvenile Detention	52040	Unemployment	D	302.82			
1001	General Fund	5250	Juvenile Detention	52045	Department - Health and Life Premiums	D	1,495,078.90			
1001	General Fund	5250	Juvenile Detention	53030	Lodging/In State	D	1,427.62			
1001	General Fund	5250	Juvenile Detention	53040	Meals/In State	D	910.00			
1001	General Fund	5250	Juvenile Detention	53060	Registration Fees/In State	D	1,315.00			
1001	General Fund	5250	Juvenile Detention	54016	License & Permit Fees	D	220.10			
1001	General Fund	5250	Juvenile Detention	54017	Memberships	D	300.00			
1001	General Fund	5250	Juvenile Detention	54022	Utilities - Gas	D	13,469.14			
1001	General Fund	5250	Juvenile Detention	54023	Utilities - Electric	D	126,052.96			
1001	General Fund	5250	Juvenile Detention	54024	Utilities - Sewer and Water	D	26,691.36			
1001	General Fund	5250	Juvenile Detention	54033	Freight and Storage	D	582.90			

Oklahoma County, Oklahoma OMB 2 CFR 200 Cost Allocation Plan and Indirect Cost Rate Proposal for FY2026  
(Based on Expenditures for FY2024 )

Fund	Fund Description	Dept.	Department Description	Acct	Account Description	CS/D	Amount	Salaries and Wages	Unallowable Costs	Central Service Costs
1001	General Fund	5250	Juvenile Detention	54046	Cellular Telephone	D	13,977.00			
1001	General Fund	5250	Juvenile Detention	54108	Equipment - Telecommunications	D	6,466.12			
1001	General Fund	5250	Juvenile Detention	54109	Equipment - Other	D	1,257.68			
1001	General Fund	5250	Juvenile Detention	54112	Software as a Service - SAAS	D	2,775.36			
1001	General Fund	5250	Juvenile Detention	54151	Building & Grounds - Maintenance Supplies	D	22,039.38			
1001	General Fund	5250	Juvenile Detention	54152	Building & Grounds - Repair Supplies	D	36.50			
1001	General Fund	5250	Juvenile Detention	54153	Equipment Supplies	D	1,659.94			
1001	General Fund	5250	Juvenile Detention	54162	Equipment - Vendors Repair	D	596.48			
1001	General Fund	5250	Juvenile Detention	54164	Telecommunication Repair	D	1,778.15			
1001	General Fund	5250	Juvenile Detention	54173	Solid Waste	D	10,387.65			
1001	General Fund	5250	Juvenile Detention	54201	Food	D	192,627.08			
1001	General Fund	5250	Juvenile Detention	54202	Kitchen Supplies	D	7,332.42			
1001	General Fund	5250	Juvenile Detention	54203	Medical Supplies	D	5,531.11			
1001	General Fund	5250	Juvenile Detention	54205	Training Supplies	D	165.00			
1001	General Fund	5250	Juvenile Detention	54206	Laundry Supplies	D	6,083.03			
1001	General Fund	5250	Juvenile Detention	54207	Personal Supplies - Juvenile	D	15,008.03			
1001	General Fund	5250	Juvenile Detention	54209	Clothing	D	14,589.55			
1001	General Fund	5250	Juvenile Detention	54211	Motor Vehicle Fuel - Unleaded	D	3,907.48			
1001	General Fund	5250	Juvenile Detention	54218	Janitorial Supplies	D	14,269.20			
1001	General Fund	5250	Juvenile Detention	54221	Recreation Supplies	D	1,610.36			
1001	General Fund	5250	Juvenile Detention	54222	Miscellaneous Supplies	D	1,572.85			
1001	General Fund	5250	Juvenile Detention	54301	Uniform and Wearing Apparel	D	12,504.28			
1001	General Fund	5250	Juvenile Detention	54302	Safety Supplies - Exiting Ammo etc.	D	4,780.05			
1001	General Fund	5250	Juvenile Detention	54305	Inmate Bedding/Textiles	D	4,719.76			
1001	General Fund	5250	Juvenile Detention	54308	Law Enforcement Supplies	D	840.00			
1001	General Fund	5250	Juvenile Detention	54351	Office Supplies	D	12,993.14			
1001	General Fund	5250	Juvenile Detention	54355	Paper	D	1,659.60			
1001	General Fund	5250	Juvenile Detention	54401	Motor Vehicle Supplies	D	7.29			
1001	General Fund	5250	Juvenile Detention	54455	Professional Services - Other	D	42,910.93			
1001	General Fund	5250	Juvenile Detention	54456	Services Other	D	17,119.85			
1001	General Fund	5250	Juvenile Detention	54459	Copier Charges	D	6,830.18			
1001	General Fund	5250	Juvenile Detention	55060	Building & Grounds - Repair/Parts/Maintenance	D	3,779.94			
1001	General Fund	5250	Juvenile Detention	55065	Building and Grounds - Equipment	D	17,501.11			
1001	General Fund	5250	Juvenile Detention	55080	Computer Equipment - Purchases	D	3,597.00			
1001	General Fund	5250	Juvenile Detention	55250	Safety Equipment	D	820.90			
1001	General Fund	5250	Juvenile Detention	55260	Kitchen Equipment	D	63,780.26			
1001	General Fund	5250	Juvenile Detention	55330	Other Equipment	D	6,424.52			
1001	General Fund	5250	Juvenile Detention	55370	Other Services	D	15,808.67			
1001	General Fund	5250	Juvenile Detention	55380	Office Equipment - Lease	D	366.60			
1001	General Fund	5250	Juvenile Detention	55390	Copier - Lease	D	9,519.12			
1001	General Fund	5260	Juvenile Bureau	51001	Full Time Salaries and Wages	D	1,676,980.07	1,676,980.07		
1001	General Fund	5260	Juvenile Bureau	51003	Over Time Salaries and Wages	D	173.52		173.52	
1001	General Fund	5260	Juvenile Bureau	52010	FICA	D	122,090.10			
1001	General Fund	5260	Juvenile Bureau	52032	Retirement - Department Defined Contribution	D	193,261.42			
1001	General Fund	5260	Juvenile Bureau	52045	Department - Health and Life Premiums	D	462,551.10			
1001	General Fund	5260	Juvenile Bureau	53060	Registration Fees/In State	D	135.00			
1001	General Fund	5260	Juvenile Bureau	54011	Postage	D	2,400.00			
1001	General Fund	5260	Juvenile Bureau	54012	Printing and Binding	D	195.00			
1001	General Fund	5260	Juvenile Bureau	54016	License & Permit Fees	D	75.00			
1001	General Fund	5260	Juvenile Bureau	54017	Memberships	D	655.00			
1001	General Fund	5260	Juvenile Bureau	54022	Utilities - Gas	D	4,715.87			
1001	General Fund	5260	Juvenile Bureau	54023	Utilities - Electric	D	56,984.85			
1001	General Fund	5260	Juvenile Bureau	54024	Utilities - Sewer and Water	D	11,604.74			
1001	General Fund	5260	Juvenile Bureau	54031	Premiums & Awards	D	93.00			
1001	General Fund	5260	Juvenile Bureau	54033	Freight and Storage	D	575.45			
1001	General Fund	5260	Juvenile Bureau	54045	Parking Fees	D	1,392.00			
1001	General Fund	5260	Juvenile Bureau	54046	Cellular Telephone	D	13,283.00			
1001	General Fund	5260	Juvenile Bureau	54108	Equipment - Telecommunications	D	279.40			
1001	General Fund	5260	Juvenile Bureau	54109	Equipment - Other	D	6,648.27			
1001	General Fund	5260	Juvenile Bureau	54112	Software as a Service - SAAS	D	532.36			
1001	General Fund	5260	Juvenile Bureau	54151	Building & Grounds - Maintenance Supplies	D	20,159.48			
1001	General Fund	5260	Juvenile Bureau	54153	Equipment Supplies	D	230.00			
1001	General Fund	5260	Juvenile Bureau	54162	Equipment - Vendors Repair	D	98.00			
1001	General Fund	5260	Juvenile Bureau	54165	Vehicle - Vendors Repair	D	147.95			
1001	General Fund	5260	Juvenile Bureau	54173	Solid Waste	D	5,593.35			
1001	General Fund	5260	Juvenile Bureau	54201	Food	D	788.38			

Oklahoma County, Oklahoma OMB 2 CFR 200 Cost Allocation Plan and Indirect Cost Rate Proposal for FY2026  
(Based on Expenditures for FY2024 )

Fund	Fund Description	Dept.	Department Description	Acct	Account Description	CS/D	Amount	Salaries and Wages	Unallowable Costs	Central Service Costs
1001	General Fund	5260	Juvenile Bureau	54203	Medical Supplies	D	1,596.40			
1001	General Fund	5260	Juvenile Bureau	54205	Training Supplies	D	666.84			
1001	General Fund	5260	Juvenile Bureau	54211	Motor Vehicle Fuel - Unleaded	D	1,967.36			
1001	General Fund	5260	Juvenile Bureau	54218	Janitorial Supplies	D	27,193.71			
1001	General Fund	5260	Juvenile Bureau	54222	Miscellaneous Supplies	D	3,684.18			
1001	General Fund	5260	Juvenile Bureau	54301	Uniform and Wearing Apparel	D	926.97			
1001	General Fund	5260	Juvenile Bureau	54308	Law Enforcement Supplies	D	1,411.30			
1001	General Fund	5260	Juvenile Bureau	54351	Office Supplies	D	14,136.04			
1001	General Fund	5260	Juvenile Bureau	54355	Paper	D	829.80			
1001	General Fund	5260	Juvenile Bureau	54401	Motor Vehicle Supplies	D	359.58			
1001	General Fund	5260	Juvenile Bureau	54453	Professional Services - Medical	D	27,306.25			
1001	General Fund	5260	Juvenile Bureau	54455	Professional Services - Other	D	19,215.30			
1001	General Fund	5260	Juvenile Bureau	54456	Services Other	D	669.08			
1001	General Fund	5260	Juvenile Bureau	54459	Copier Charges	D	3,715.48			
1001	General Fund	5260	Juvenile Bureau	55065	Building and Grounds - Equipment	D	11,305.25			
1001	General Fund	5260	Juvenile Bureau	55080	Computer Equipment - Purchases	D	2,398.00			
1001	General Fund	5260	Juvenile Bureau	55370	Other Services	D	1,571.00			
1001	General Fund	5260	Juvenile Bureau	55380	Office Equipment - Lease	D	197.40			
1001	General Fund	5260	Juvenile Bureau	55390	Copier - Lease	D	2,460.96			
1001	General Fund	5500	Emergency Management	51001	Full Time Salaries and Wages	D	374,849.41	374,849.41		
1001	General Fund	5500	Emergency Management	52010	FICA	D	27,416.93			
1001	General Fund	5500	Emergency Management	52032	Retirement - Department Defined Contribution	D	44,621.90			
1001	General Fund	5500	Emergency Management	52045	Department - Health and Life Premiums	D	93,348.00			
1001	General Fund	5500	Emergency Management	53030	Lodging/In State	D	1,467.09			
1001	General Fund	5500	Emergency Management	53040	Meals/In State	D	1,180.34			
1001	General Fund	5500	Emergency Management	53050	Car Rental/In State	D	750.31			
1001	General Fund	5500	Emergency Management	53060	Registration Fees/In State	D	709.00			
1001	General Fund	5500	Emergency Management	53070	Airfare/Out State	D	705.97			
1001	General Fund	5500	Emergency Management	54016	License & Permit Fees	D	141.50			
1001	General Fund	5500	Emergency Management	54017	Memberships	D	280.00			
1001	General Fund	5500	Emergency Management	54020	Premiums - Other Insurance	D	1,860.00			
1001	General Fund	5500	Emergency Management	54021	Telecommunications Services	D	9,799.95			
1001	General Fund	5500	Emergency Management	54029	Transportation	D	100.20			
1001	General Fund	5500	Emergency Management	54030	Subscriptions	D	480.00			
1001	General Fund	5500	Emergency Management	54033	Freight and Storage	D	2,373.70			
1001	General Fund	5500	Emergency Management	54045	Parking Fees	D	5,268.00			
1001	General Fund	5500	Emergency Management	54102	Office Space	D	31,250.00			
1001	General Fund	5500	Emergency Management	54108	Equipment - Telecommunications	D	91.52			
1001	General Fund	5500	Emergency Management	54109	Equipment - Other	D	2,389.64			
1001	General Fund	5500	Emergency Management	54112	Software as a Service - SAAS	D	5,000.00			
1001	General Fund	5500	Emergency Management	54160	Vehicle - Vendors Maintenance	D	2,247.92			
1001	General Fund	5500	Emergency Management	54211	Motor Vehicle Fuel - Unleaded	D	10,579.78			
1001	General Fund	5500	Emergency Management	54222	Miscellaneous Supplies	D	2,683.86			
1001	General Fund	5500	Emergency Management	54301	Uniform and Wearing Apparel	D	60.00			
1001	General Fund	5500	Emergency Management	54351	Office Supplies	D	3,097.09			
1001	General Fund	5500	Emergency Management	54403	Motor Vehicle Other - Parts	D	1,150.82			
1001	General Fund	5500	Emergency Management	54455	Professional Services - Other	D	3,285.93			
1001	General Fund	5500	Emergency Management	55095	Computer Software	D	400.00			
1001	General Fund	5500	Emergency Management	55180	Motor Vehicle - Other	D	65,052.40			
1001	General Fund	5500	Emergency Management	55200	Telecommunications Equipment	D	19,794.36			
1001	General Fund	5500	Emergency Management	55330	Other Equipment	D	43,252.98			
1001	General Fund	6100	Social Services	51001	Full Time Salaries and Wages	D	879,395.62	879,395.62		
1001	General Fund	6100	Social Services	51002	Part Time Salaries and Wages	D	17,513.38	17,513.38		
1001	General Fund	6100	Social Services	52010	FICA	D	65,616.20			
1001	General Fund	6100	Social Services	52032	Retirement - Department Defined Contribution	D	105,163.61			
1001	General Fund	6100	Social Services	52045	Department - Health and Life Premiums	D	222,567.00			
1001	General Fund	6100	Social Services	53020	Mileage/In State	D	132.43			
1001	General Fund	6100	Social Services	53060	Registration Fees/In State	D	590.00			
1001	General Fund	6100	Social Services	53080	Incidentals/In State	D	23.00			
1001	General Fund	6100	Social Services	54011	Postage	D	25,365.16			
1001	General Fund	6100	Social Services	54015	Burial Charge	D	56,585.00			
1001	General Fund	6100	Social Services	54016	License & Permit Fees	D	177.28			
1001	General Fund	6100	Social Services	54025	Utilities - Telephone	D	112.02			
1001	General Fund	6100	Social Services	54030	Subscriptions	D	775.95			
1001	General Fund	6100	Social Services	54033	Freight and Storage	D	411.22			
1001	General Fund	6100	Social Services	54045	Parking Fees	D	3,576.00			

Oklahoma County, Oklahoma OMB 2 CFR 200 Cost Allocation Plan and Indirect Cost Rate Proposal for FY2026  
(Based on Expenditures for FY2024 )

Fund	Fund Description	Dept.	Department Description	Acct	Account Description	CS/D	Amount	Salaries and Wages	Unallowable Costs	Central Service Costs
1001	General Fund	6100	Social Services	54046	Cellular Telephone	D	14,160.00			
1001	General Fund	6100	Social Services	54048	Parking Transponder Deposit	D	20.00			
1001	General Fund	6100	Social Services	54151	Building & Grounds - Maintenance Supplies	D	520.40			
1001	General Fund	6100	Social Services	54165	Vehicle - Vendors Repair	D	18.00			
1001	General Fund	6100	Social Services	54211	Motor Vehicle Fuel - Unleaded	D	1,363.30			
1001	General Fund	6100	Social Services	54213	Oil, Grease, Lube and Other Supplies	D	1,076.17			
1001	General Fund	6100	Social Services	54215	Medical - County Pharmacy Supplies	D	251,770.67			
1001	General Fund	6100	Social Services	54301	Uniform and Wearing Apparel	D	2,454.90			
1001	General Fund	6100	Social Services	54351	Office Supplies	D	10,821.55			
1001	General Fund	6100	Social Services	54455	Professional Services - Other	D	9,925.19			
1001	General Fund	6100	Social Services	54456	Services Other	D	449,954.98			
1001	General Fund	6100	Social Services	54459	Copier Charges	D	111.65			
1001	General Fund	6100	Social Services	55065	Building and Grounds - Equipment	D	567.42			
1001	General Fund	6100	Social Services	55080	Computer Equipment - Purchases	D	4,035.40			
1001	General Fund	6100	Social Services	55270	Medical Equipment	D	4,995.00			
1001	General Fund	6100	Social Services	55380	Office Equipment - Lease	D	989.90			
1001	General Fund	6100	Social Services	55390	Copier - Lease	D	1,582.35			
1001	General Fund	7100	Free Fair	51002	Part Time Salaries and Wages	D	4,900.00	4,900.00		
1001	General Fund	7100	Free Fair	52010	FICA	D	374.85			
1001	General Fund	7100	Free Fair	54012	Printing and Binding	D	4,903.00			
1001	General Fund	7100	Free Fair	54013	Advertising	D	11.55			
1001	General Fund	7100	Free Fair	54031	Premiums & Awards	D	40,725.00			
1001	General Fund	7100	Free Fair	54102	Office Space	D	6,000.00			
1001	General Fund	7100	Free Fair	54106	Equipment-Software	D	59.99			
1001	General Fund	7100	Free Fair	54109	Equipment - Other	D	665.00			
1001	General Fund	7100	Free Fair	54222	Miscellaneous Supplies	D	1,930.00			
1001	General Fund	7100	Free Fair	54351	Office Supplies	D	695.24			
1001	General Fund	7100	Free Fair	54354	Printing Supplies	D	1,560.00			
1001	General Fund	7100	Free Fair	55080	Computer Equipment - Purchases	D	762.88			
1001	General Fund	7100	Free Fair	55330	Other Equipment	D	1,950.00			
1001	General Fund	9100	District #1	51001	Full Time Salaries and Wages	D	312,356.99	312,356.99		
1001	General Fund	9100	District #1	51002	Part Time Salaries and Wages	D	315.00	315.00		
1001	General Fund	9100	District #1	52010	FICA	D	22,798.89			
1001	General Fund	9100	District #1	52032	Retirement - Department Defined Contribution	D	37,482.83			
1001	General Fund	9100	District #1	52045	Department - Health and Life Premiums	D	64,773.00			
1001	General Fund	9100	District #1	53020	Mileage/In State	D	244.58			
1001	General Fund	9100	District #1	53030	Lodging/In State	D	4,239.53			
1001	General Fund	9100	District #1	53040	Meals/In State	D	518.35			
1001	General Fund	9100	District #1	53060	Registration Fees/In State	D	2,187.70			
1001	General Fund	9100	District #1	53070	Airfare/Out State	D	2,874.43			
1001	General Fund	9100	District #1	53080	Incidentals/In State	D	756.29			
1001	General Fund	9100	District #1	54012	Printing and Binding	D	290.28			
1001	General Fund	9100	District #1	54016	License & Permit Fees	D	140.25			
1001	General Fund	9100	District #1	54030	Subscriptions	D	955.30			
1001	General Fund	9100	District #1	54031	Premiums & Awards	D	285.00			
1001	General Fund	9100	District #1	54045	Parking Fees	D	5,268.00			
1001	General Fund	9100	District #1	54046	Cellular Telephone	D	58.50			
1001	General Fund	9100	District #1	54047	Project Reimbursement	D	148,920.81			
1001	General Fund	9100	District #1	54048	Parking Transponder Deposit	D	20.00			
1001	General Fund	9100	District #1	54202	Kitchen Supplies	D	449.19			
1001	General Fund	9100	District #1	54301	Uniform and Wearing Apparel	D	790.38			
1001	General Fund	9100	District #1	54302	Safety Supplies - Exting Ammo etc.	D	585.15			
1001	General Fund	9100	District #1	54351	Office Supplies	D	1,660.27			
1001	General Fund	9100	District #1	54455	Professional Services - Other	D	507.00			
1001	General Fund	9100	District #1	54459	Copier Charges	D	583.70			
1001	General Fund	9100	District #1	55080	Computer Equipment - Purchases	D	85.00			
1001	General Fund	9100	District #1	55100	Furniture	D	389.98			
1001	General Fund	9100	District #1	55105	Furnishings	D	988.95			
1001	General Fund	9100	District #1	55390	Copier - Lease	D	2,147.82			
1001	General Fund	9200	District #2	51001	Full Time Salaries and Wages	D	179,002.33	179,002.33		
1001	General Fund	9200	District #2	51002	Part Time Salaries and Wages	D	9,330.00	9,330.00		
1001	General Fund	9200	District #2	51003	Over Time Salaries and Wages	D	188.09	188.09		
1001	General Fund	9200	District #2	52010	FICA	D	13,897.71			
1001	General Fund	9200	District #2	52032	Retirement - Department Defined Contribution	D	21,450.25			
1001	General Fund	9200	District #2	52045	Department - Health and Life Premiums	D	41,857.00			
1001	General Fund	9200	District #2	53060	Registration Fees/In State	D	3,420.71			

Oklahoma County, Oklahoma OMB 2 CFR 200 Cost Allocation Plan and Indirect Cost Rate Proposal for FY2026  
(Based on Expenditures for FY2024 )

Fund	Fund Description	Dept.	Department Description	Acct	Account Description	CS/D	Amount	Salaries and Wages	Unallowable Costs	Central Service Costs
1001	General Fund	9200	District #2	54030	Subscriptions	D	249.00			
1001	General Fund	9200	District #2	54045	Parking Fees	D	6,831.00			
1001	General Fund	9200	District #2	54046	Cellular Telephone	D	2,150.54			
1001	General Fund	9200	District #2	54351	Office Supplies	D	14,288.38			
1001	General Fund	9200	District #2	54455	Professional Services - Other	D	125.00			
1001	General Fund	9200	District #2	54459	Copier Charges	D	2,263.33			
1001	General Fund	9200	District #2	55080	Computer Equipment - Purchases	D	876.70			
1001	General Fund	9200	District #2	55390	Copier - Lease	D	146.39			
1001	General Fund	9300	District #3	51001	Full Time Salaries and Wages	D	224,520.22	224,520.22		
1001	General Fund	9300	District #3	52010	FICA	D	16,616.55			
1001	General Fund	9300	District #3	52032	Retirement - Department Defined Contribution	D	25,564.05			
1001	General Fund	9300	District #3	52045	Department - Health and Life Premiums	D	35,481.00			
1001	General Fund	9300	District #3	53020	Mileage/In State	D	328.47			
1001	General Fund	9300	District #3	53030	Lodging/In State	D	5,968.28			
1001	General Fund	9300	District #3	53040	Meals/In State	D	2,881.00			
1001	General Fund	9300	District #3	53060	Registration Fees/In State	D	1,485.00			
1001	General Fund	9300	District #3	53070	Airfare/Out State	D	2,342.76			
1001	General Fund	9300	District #3	53080	Incidentals/In State	D	573.47			
1001	General Fund	9300	District #3	54030	Subscriptions	D	933.60			
1001	General Fund	9300	District #3	54040	Publications	D	4,933.51			
1001	General Fund	9300	District #3	54045	Parking Fees	D	5,971.73			
1001	General Fund	9300	District #3	54046	Cellular Telephone	D	2,283.67			
1001	General Fund	9300	District #3	54048	Parking Transponder Deposit	D	20.00			
1001	General Fund	9300	District #3	54157	Equipment - Vendors Maintenance	D	115.13			
1001	General Fund	9300	District #3	54169	Road and Bridge Vendor Contract	D	49,159.68			
1001	General Fund	9300	District #3	54171	Road Sign	D	2,700.00			
1001	General Fund	9300	District #3	54222	Miscellaneous Supplies	D	2,939.87			
1001	General Fund	9300	District #3	54351	Office Supplies	D	482.83			
1001	General Fund	9300	District #3	54456	Services Other	D	27,500.00			
1001	General Fund	9300	District #3	55060	Building & Grounds - Repair/Parts/Maintenance	D	21,727.69			
1001	General Fund	9300	District #3	55080	Computer Equipment - Purchases	D	5,804.20			
1001	General Fund	9300	District #3	55095	Computer Software	D	135.08			
1001	General Fund	9300	District #3	55100	Furniture	D	1,856.02			
1001	General Fund	9400	Engineer	51001	Full Time Salaries and Wages	D	362,727.42	362,727.42		
1001	General Fund	9400	Engineer	52010	FICA	D	27,075.02			
1001	General Fund	9400	Engineer	52032	Retirement - Department Defined Contribution	D	43,395.24			
1001	General Fund	9400	Engineer	52045	Department - Health and Life Premiums	D	55,716.00			
1001	General Fund	9400	Engineer	53020	Mileage/In State	D	907.53			
1001	General Fund	9400	Engineer	53060	Registration Fees/In State	D	1,515.00			
1001	General Fund	9400	Engineer	54012	Printing and Binding	D	165.00			
1001	General Fund	9400	Engineer	54016	License & Permit Fees	D	748.11			
1001	General Fund	9400	Engineer	54017	Memberships	D	1,405.00			
1001	General Fund	9400	Engineer	54021	Telecommunications Services	D	456.12			
1001	General Fund	9400	Engineer	54030	Subscriptions	D	179.00			
1001	General Fund	9400	Engineer	54040	Publications	D	74.11			
1001	General Fund	9400	Engineer	54045	Parking Fees	D	7,452.00			
1001	General Fund	9400	Engineer	54046	Cellular Telephone	D	3,360.00			
1001	General Fund	9400	Engineer	54112	Software as a Service - SAAS	D	341.41			
1001	General Fund	9400	Engineer	54173	Solid Waste	D	2,240.00			
1001	General Fund	9400	Engineer	54211	Motor Vehicle Fuel - Unleaded	D	1,137.61			
1001	General Fund	9400	Engineer	54301	Uniform and Wearing Apparel	D	224.95			
1001	General Fund	9400	Engineer	54351	Office Supplies	D	2,420.67			
1001	General Fund	9400	Engineer	54459	Copier Charges	D	763.60			
1001	General Fund	9400	Engineer	55110	Office Equipment - Purchase	D	3,080.64			
1001	General Fund	9400	Engineer	55390	Copier - Lease	D	2,519.34			
1001	General Fund	9500	Economic Development	54456	Services Other	D	225,000.00			
1001	General Fund	9910	Employee Benefits Supplement	54500	Transfer - Supplement	D	2,141,000.00			
1001	General Fund	9930	Self Insurance Supplement	54500	Transfer - Supplement	D	350,000.00			
1110	Highway Cash	9100	District #1	51001	Full Time Salaries and Wages	D	1,740,978.48	1,740,978.48		
1110	Highway Cash	9100	District #1	51003	Over Time Salaries and Wages	D	152.63	152.63		
1110	Highway Cash	9100	District #1	52010	FICA	D	125,068.55			
1110	Highway Cash	9100	District #1	52032	Retirement - Department Defined Contribution	D	207,299.95			
1110	Highway Cash	9100	District #1	52045	Department - Health and Life Premiums	D	608,289.00			
1110	Highway Cash	9100	District #1	53060	Registration Fees/In State	D	40.00			
1110	Highway Cash	9100	District #1	53070	Airfare/Out State	D	584.19			
1110	Highway Cash	9100	District #1	53080	Incidentals/In State	D	53.51			

Oklahoma County, Oklahoma OMB 2 CFR 200 Cost Allocation Plan and Indirect Cost Rate Proposal for FY2026  
(Based on Expenditures for FY2024 )

Fund	Fund Description	Dept.	Department Description	Acct	Account Description	CS/D	Amount	Salaries and Wages	Unallowable Costs	Central Service Costs
1110	Highway Cash	9100	District #1	54016	License & Permit Fees	D	512.17			
1110	Highway Cash	9100	District #1	54023	Utilities - Electric	D	12,135.42			
1110	Highway Cash	9100	District #1	54024	Utilities - Sewer and Water	D	4,744.54			
1110	Highway Cash	9100	District #1	54045	Parking Fees	D	1,534.87			
1110	Highway Cash	9100	District #1	54046	Cellular Telephone	D	4,590.00			
1110	Highway Cash	9100	District #1	54108	Equipment - Telecommunications	D	14,598.05			
1110	Highway Cash	9100	District #1	54109	Equipment - Other	D	120.06			
1110	Highway Cash	9100	District #1	54110	Equipment - Rental	D	36,077.72			
1110	Highway Cash	9100	District #1	54151	Building & Grounds - Maintenance Supplies	D	2,803.36			
1110	Highway Cash	9100	District #1	54152	Building & Grounds - Repair Supplies	D	23,759.37			
1110	Highway Cash	9100	District #1	54156	Bldg & Grounds-Maintenance	D	5,568.58			
1110	Highway Cash	9100	District #1	54157	Equipment - Vendors Maintenance	D	2,647.96			
1110	Highway Cash	9100	District #1	54162	Equipment - Vendors Repair	D	470.00			
1110	Highway Cash	9100	District #1	54165	Vehicle - Vendors Repair	D	325.00			
1110	Highway Cash	9100	District #1	54169	Road and Bridge Vendor Contract	D	18,761.00			
1110	Highway Cash	9100	District #1	54170	Road and Bridge Materials	D	1,864,822.18			
1110	Highway Cash	9100	District #1	54171	Road Sign	D	13,583.38			
1110	Highway Cash	9100	District #1	54173	Solid Waste	D	676.68			
1110	Highway Cash	9100	District #1	54174	Highway Equipment Repair - Parts	D	153,085.89			
1110	Highway Cash	9100	District #1	54202	Kitchen Supplies	D	124.41			
1110	Highway Cash	9100	District #1	54203	Medical Supplies	D	674.81			
1110	Highway Cash	9100	District #1	54211	Motor Vehicle Fuel - Unleaded	D	18,604.10			
1110	Highway Cash	9100	District #1	54212	Motor Vehicle Fuel - Diesel	D	143,719.60			
1110	Highway Cash	9100	District #1	54213	Oil, Grease, Lube and Other Supplies	D	8,289.50			
1110	Highway Cash	9100	District #1	54214	Shop Supplies	D	3,880.95			
1110	Highway Cash	9100	District #1	54218	Janitorial Supplies	D	368.00			
1110	Highway Cash	9100	District #1	54223	Small Tools	D	4,166.65			
1110	Highway Cash	9100	District #1	54301	Uniform and Wearing Apparel	D	9,747.56			
1110	Highway Cash	9100	District #1	54302	Safety Supplies - Exting Ammo etc.	D	10,791.06			
1110	Highway Cash	9100	District #1	54351	Office Supplies	D	3,201.33			
1110	Highway Cash	9100	District #1	54403	Motor Vehicle Other - Parts	D	19,704.49			
1110	Highway Cash	9100	District #1	54454	Professional Services - A and E	D	1,652.94			
1110	Highway Cash	9100	District #1	54455	Professional Services - Other	D	9,644.00			
1110	Highway Cash	9100	District #1	54459	Copier Charges	D	985.06			
1110	Highway Cash	9100	District #1	55060	Building & Grounds - Repair/Parts/Maintenance	D	160,794.00			
1110	Highway Cash	9100	District #1	55070	Building & Grounds - Fixtures/Permanent	D	5,277.42			
1110	Highway Cash	9100	District #1	55080	Computer Equipment - Purchases	D	102.08			
1110	Highway Cash	9100	District #1	55095	Computer Software	D	2,049.70			
1110	Highway Cash	9100	District #1	55100	Furniture	D	85.12			
1110	Highway Cash	9100	District #1	55130	Highway Equipment - Purchase	D	300,658.00			
1110	Highway Cash	9100	District #1	55230	Shop Equipment	D	17,396.00			
1110	Highway Cash	9100	District #1	55390	Copier - Lease	D	2,083.30			
1110	Highway Cash	9200	District #2	51001	Full Time Salaries and Wages	D	1,102,855.37	1,102,855.37		
1110	Highway Cash	9200	District #2	51002	Part Time Salaries and Wages	D	12,900.00	12,900.00		
1110	Highway Cash	9200	District #2	51003	Over Time Salaries and Wages	D	2,036.72	2,036.72		
1110	Highway Cash	9200	District #2	52010	FICA	D	81,664.94			
1110	Highway Cash	9200	District #2	52032	Retirement - Department Defined Contribution	D	129,582.84			
1110	Highway Cash	9200	District #2	52040	Unemployment	D	1,972.00			
1110	Highway Cash	9200	District #2	52045	Department - Health and Life Premiums	D	292,484.00			
1110	Highway Cash	9200	District #2	54012	Printing and Binding	D	80.00			
1110	Highway Cash	9200	District #2	54016	License & Permit Fees	D	2,025.05			
1110	Highway Cash	9200	District #2	54017	Memberships	D	1,652.94			
1110	Highway Cash	9200	District #2	54022	Utilities - Gas	D	3,107.23			
1110	Highway Cash	9200	District #2	54023	Utilities - Electric	D	16,832.38			
1110	Highway Cash	9200	District #2	54045	Parking Fees	D	1,001.00			
1110	Highway Cash	9200	District #2	54046	Cellular Telephone	D	5,150.54			
1110	Highway Cash	9200	District #2	54109	Equipment - Other	D	12,773.91			
1110	Highway Cash	9200	District #2	54110	Equipment - Rental	D	2,519.44			
1110	Highway Cash	9200	District #2	54151	Building & Grounds - Maintenance Supplies	D	926.75			
1110	Highway Cash	9200	District #2	54153	Equipment Supplies	D	53,044.73			
1110	Highway Cash	9200	District #2	54156	Building & Grounds - Vendors Maintenance	D	12,729.82			
1110	Highway Cash	9200	District #2	54157	Equipment - Vendors Maintenance	D	17,447.64			
1110	Highway Cash	9200	District #2	54161	Building & Grounds - Vendors Repairs	D	8,360.00			
1110	Highway Cash	9200	District #2	54162	Equipment - Vendors Repair	D	91,264.65			
1110	Highway Cash	9200	District #2	54170	Road and Bridge Materials	D	505,333.49			
1110	Highway Cash	9200	District #2	54175	Project Materials - Highway Districts	D	452,405.15			



Oklahoma County, Oklahoma OMB 2 CFR 200 Cost Allocation Plan and Indirect Cost Rate Proposal for FY2026  
(Based on Expenditures for FY2024 )

Fund	Fund Description	Dept.	Department Description	Acct	Account Description	CS/D	Amount	Salaries and Wages	Unallowable Costs	Central Service Costs
1110	Highway Cash	9200	District #2	54211	Motor Vehicle Fuel - Unleaded	D	29,440.73			
1110	Highway Cash	9200	District #2	54212	Motor Vehicle Fuel - Diesel	D	70,767.29			
1110	Highway Cash	9200	District #2	54213	Oil, Grease, Lube and Other Supplies	D	2,786.72			
1110	Highway Cash	9200	District #2	54214	Shop Supplies	D	19,369.45			
1110	Highway Cash	9200	District #2	54218	Janitorial Supplies	D	781.50			
1110	Highway Cash	9200	District #2	54222	Miscellaneous Supplies	D	7,783.21			
1110	Highway Cash	9200	District #2	54220	Chemical Supplies	D	579.00			
1110	Highway Cash	9200	District #2	54300	Uniform Rental	D	10,596.40			
1110	Highway Cash	9200	District #2	54301	Uniform and Wearing Apparel	D	6,154.46			
1110	Highway Cash	9200	District #2	54302	Safety Supplies - Exting Ammo etc.	D	1,815.26			
1110	Highway Cash	9200	District #2	54351	Office Supplies	D	1,477.39			
1110	Highway Cash	9200	District #2	54454	Professional Services - A and E	D	28,565.00			
1110	Highway Cash	9200	District #2	54455	Professional Services - Other	D	425,033.53			
1110	Highway Cash	9200	District #2	54456	Services Other	D	5,182.50			
1110	Highway Cash	9200	District #2	54459	Copier Charges	D	420.00			
1110	Highway Cash	9200	District #2	55130	Highway Equipment - Purchase	D	931,863.08			
1110	Highway Cash	9300	District #3	51001	Full Time Salaries and Wages	D	2,268,319.36	2,268,319.36		
1110	Highway Cash	9300	District #3	51002	Part Time Salaries and Wages	D	4,022.75	4,022.75		
1110	Highway Cash	9300	District #3	51003	Over Time Salaries and Wages	D	328.19	328.19		
1110	Highway Cash	9300	District #3	52010	FICA	D	164,854.91			
1110	Highway Cash	9300	District #3	52032	Retirement - Department Defined Contribution	D	267,025.99			
1110	Highway Cash	9300	District #3	52040	Unemployment	D	3,944.00			
1110	Highway Cash	9300	District #3	52045	Department - Health and Life Premiums	D	676,975.00			
1110	Highway Cash	9300	District #3	53020	Mileage/In State	D	129.42			
1110	Highway Cash	9300	District #3	53030	Lodging/In State	D	9,965.65			
1110	Highway Cash	9300	District #3	53040	Meals/In State	D	1,422.00			
1110	Highway Cash	9300	District #3	53060	Registration Fees/In State	D	4,152.00			
1110	Highway Cash	9300	District #3	53080	Incidentals/In State	D	80.06			
1110	Highway Cash	9300	District #3	54016	License & Permit Fees	D	1,519.50			
1110	Highway Cash	9300	District #3	54022	Utilities - Gas	D	10,151.38			
1110	Highway Cash	9300	District #3	54023	Utilities - Electric	D	20,244.75			
1110	Highway Cash	9300	District #3	54024	Utilities - Sewer and Water	D	2,841.85			
1110	Highway Cash	9300	District #3	54029	Transportation	D	12,849.71			
1110	Highway Cash	9300	District #3	54030	Subscriptions	D	4,668.86			
1110	Highway Cash	9300	District #3	54031	Premiums & Awards	D	7,250.26			
1110	Highway Cash	9300	District #3	54045	Parking Fees	D	1,092.00			
1110	Highway Cash	9300	District #3	54046	Cellular Telephone	D	10,800.03			
1110	Highway Cash	9300	District #3	54109	Equipment - Other	D	46,215.79			
1110	Highway Cash	9300	District #3	54111	Software Assurance Upgrade	D	1,689.69			
1110	Highway Cash	9300	District #3	54151	Building & Grounds - Maintenance Supplies	D	1,386.53			
1110	Highway Cash	9300	District #3	54152	Building & Grounds - Repair Supplies	D	4,219.98			
1110	Highway Cash	9300	District #3	54153	Equipment Supplies	D	3,106.20			
1110	Highway Cash	9300	District #3	54155	Telecommunications - Repair Supplies In House	D	3,984.00			
1110	Highway Cash	9300	District #3	54156	Bldg & Grounds-Maintenance	D	3,855.00			
1110	Highway Cash	9300	District #3	54157	Equipment - Vendors Maintenance	D	4,528.57			
1110	Highway Cash	9300	District #3	54161	Building & Grounds - Vendors Repairs	D	1,645.00			
1110	Highway Cash	9300	District #3	54162	Equipment - Vendors Repair	D	16,803.50			
1110	Highway Cash	9300	District #3	54165	Vehicle - Vendors Repair	D	1,370.76			
1110	Highway Cash	9300	District #3	54169	Road and Bridge Vendor Contract	D	2,500,139.89			
1110	Highway Cash	9300	District #3	54170	Road and Bridge Materials	D	240,111.18			
1110	Highway Cash	9300	District #3	54171	Road Sign	D	96,901.09			
1110	Highway Cash	9300	District #3	54174	Highway Equipment Repair - Parts	D	37,805.21			
1110	Highway Cash	9300	District #3	54211	Motor Vehicle Fuel - Unleaded	D	62,677.14			
1110	Highway Cash	9300	District #3	54212	Motor Vehicle Fuel - Diesel	D	89,270.80			
1110	Highway Cash	9300	District #3	54213	Oil, Grease, Lube and Other Supplies	D	19,878.13			
1110	Highway Cash	9300	District #3	54214	Shop Supplies	D	3,260.47			
1110	Highway Cash	9300	District #3	54218	Janitorial Supplies	D	4,410.50			
1110	Highway Cash	9300	District #3	54222	Miscellaneous Supplies	D	11,715.59			
1110	Highway Cash	9300	District #3	54223	Small Tools	D	2,059.85			
1110	Highway Cash	9300	District #3	54300	Uniform Rental	D	10,839.65			
1110	Highway Cash	9300	District #3	54301	Uniform and Wearing Apparel	D	8,781.93			
1110	Highway Cash	9300	District #3	54302	Safety Supplies - Exting Ammo etc.	D	10,007.67			
1110	Highway Cash	9300	District #3	54351	Office Supplies	D	582.73			
1110	Highway Cash	9300	District #3	54354	Printing Supplies	D	1,400.49			
1110	Highway Cash	9300	District #3	54401	Motor Vehicle Supplies	D	4,318.95			
1110	Highway Cash	9300	District #3	54402	Motor Vehicle Passenger - Parts	D	18,395.31			

Oklahoma County, Oklahoma OMB 2 CFR 200 Cost Allocation Plan and Indirect Cost Rate Proposal for FY2026  
(Based on Expenditures for FY2024 )

Fund	Fund Description	Dept.	Department Description	Acct	Account Description	CS/D	Amount	Salaries and Wages	Unallowable Costs	Central Service Costs
1110	Highway Cash	9300	District #3	54403	Motor Vehicle Other - Parts	D	41,455.66			
1110	Highway Cash	9300	District #3	54454	Professional Services - A and E	D	18,000.00			
1110	Highway Cash	9300	District #3	54455	Professional Services - Other	D	20,052.46			
1110	Highway Cash	9300	District #3	54456	Services Other	D	71,459.34			
1110	Highway Cash	9300	District #3	54458	Professional Services - Training & Education	D	5,700.00			
1110	Highway Cash	9300	District #3	55050	Right of Way Acquisition	D	28,050.00			
1110	Highway Cash	9300	District #3	55065	Building and Grounds - Equipment	D	3,093.70			
1110	Highway Cash	9300	District #3	55070	Building & Grounds - Fixtures/Permanent	D	30,574.47			
1110	Highway Cash	9300	District #3	55080	Computer Equipment - Purchases	D	5,850.44			
1110	Highway Cash	9300	District #3	55100	Furniture	D	452.75			
1110	Highway Cash	9300	District #3	55130	Highway Equipment - Purchase	D	868,486.15			
1110	Highway Cash	9300	District #3	55170	Motor Vehicle - Passenger	D	275,286.47			
1110	Highway Cash	9300	District #3	55180	Motor Vehicle - Other	D	119,183.18			
1110	Highway Cash	9300	District #3	55190	Motor Vehicle Passenger - Parts	D	2,618.00			
1110	Highway Cash	9300	District #3	55330	Other Equipment	D	22,685.01			
1111	County Road and Bridge (CBRI) Fund	1111	County Road and Bridge	54455	Professional Services - Other	D	1,323,393.97			
1130	Resale Property-Budgeted	1130	Resale Property-Budgeted	51001	Full Time Salaries and Wages	D	2,063,117.71	2,063,117.71		
1130	Resale Property-Budgeted	1130	Resale Property-Budgeted	51003	Over Time Salaries and Wages	D	18.54	18.54		
1130	Resale Property-Budgeted	1130	Resale Property-Budgeted	52010	FICA	D	151,460.35			
1130	Resale Property-Budgeted	1130	Resale Property-Budgeted	52032	Retirement - Department Defined Contribution	D	246,824.09			
1130	Resale Property-Budgeted	1130	Resale Property-Budgeted	52045	Department - Health and Life Premiums	D	482,641.00			
1130	Resale Property-Budgeted	1130	Resale Property-Budgeted	53020	Mileage/In State	D	4,261.96			
1130	Resale Property-Budgeted	1130	Resale Property-Budgeted	53030	Lodging/In State	D	1,738.82			
1130	Resale Property-Budgeted	1130	Resale Property-Budgeted	53040	Meals/In State	D	1,504.50			
1130	Resale Property-Budgeted	1130	Resale Property-Budgeted	53060	Registration Fees/In State	D	500.00			
1130	Resale Property-Budgeted	1130	Resale Property-Budgeted	53080	Incidentals/In State	D	18.55			
1130	Resale Property-Budgeted	1130	Resale Property-Budgeted	54011	Postage	D	254,000.00			
1130	Resale Property-Budgeted	1130	Resale Property-Budgeted	54012	Printing and Binding	D	32,667.63			
1130	Resale Property-Budgeted	1130	Resale Property-Budgeted	54016	License & Permit Fees	D	775.00			
1130	Resale Property-Budgeted	1130	Resale Property-Budgeted	54017	Memberships	D	2,250.00			
1130	Resale Property-Budgeted	1130	Resale Property-Budgeted	54021	Telecommunications Services	D	2,740.27			
1130	Resale Property-Budgeted	1130	Resale Property-Budgeted	54024	Utilities - Sewer and Water	D	4,000.14			
1130	Resale Property-Budgeted	1130	Resale Property-Budgeted	54028	Books	D	80.00			
1130	Resale Property-Budgeted	1130	Resale Property-Budgeted	54030	Subscriptions	D	2,085.00			
1130	Resale Property-Budgeted	1130	Resale Property-Budgeted	54033	Freight and Storage	D	559.99			
1130	Resale Property-Budgeted	1130	Resale Property-Budgeted	54035	Bottled Water	D	53.91			
1130	Resale Property-Budgeted	1130	Resale Property-Budgeted	54039	Refund	D	1,119.02			
1130	Resale Property-Budgeted	1130	Resale Property-Budgeted	54040	Publications	D	278,986.20			
1130	Resale Property-Budgeted	1130	Resale Property-Budgeted	54045	Parking Fees	D	33,876.00			
1130	Resale Property-Budgeted	1130	Resale Property-Budgeted	54046	Cellular Telephone	D	1,104.00			
1130	Resale Property-Budgeted	1130	Resale Property-Budgeted	54048	Parking Transponder Deposit	D	20.00			
1130	Resale Property-Budgeted	1130	Resale Property-Budgeted	54102	Office Space	D	1,586.00			
1130	Resale Property-Budgeted	1130	Resale Property-Budgeted	54113	Software Annual License Renew	D	4,074.97			
1130	Resale Property-Budgeted	1130	Resale Property-Budgeted	54152	Building & Grounds - Repair Supplies	D	255.95			
1130	Resale Property-Budgeted	1130	Resale Property-Budgeted	54156	Bldg & Grounds-Maintenance	D	240.00			
1130	Resale Property-Budgeted	1130	Resale Property-Budgeted	54157	Equipment - Vendors Maintenance	D	27,473.00			
1130	Resale Property-Budgeted	1130	Resale Property-Budgeted	54209	Clothing	D	1,655.56			
1130	Resale Property-Budgeted	1130	Resale Property-Budgeted	54211	Motor Vehicle Fuel - Unleaded	D	3,566.52			
1130	Resale Property-Budgeted	1130	Resale Property-Budgeted	54214	Shop Supplies	D	6,165.36			
1130	Resale Property-Budgeted	1130	Resale Property-Budgeted	54301	Uniform and Wearing Apparel	D	2,712.27			
1130	Resale Property-Budgeted	1130	Resale Property-Budgeted	54351	Office Supplies	D	39,661.05			
1130	Resale Property-Budgeted	1130	Resale Property-Budgeted	54451	Professional Services - Legal	D	314,550.00			
1130	Resale Property-Budgeted	1130	Resale Property-Budgeted	54455	Professional Services - Other	D	115,042.73			
1130	Resale Property-Budgeted	1130	Resale Property-Budgeted	54456	Services Other	D	1,211.00			
1130	Resale Property-Budgeted	1130	Resale Property-Budgeted	54458	Professional Services - Training & Education	D	130.00			
1130	Resale Property-Budgeted	1130	Resale Property-Budgeted	54459	Copier Charges	D	737.94			
1130	Resale Property-Budgeted	1130	Resale Property-Budgeted	55060	Building & Grounds - Repair/Parts/Maintenance	D	3,744.32			
1130	Resale Property-Budgeted	1130	Resale Property-Budgeted	55065	Building and Grounds - Equipment	D	11,546.78			
1130	Resale Property-Budgeted	1130	Resale Property-Budgeted	55080	Computer Equipment - Purchases	D	20,996.34			
1130	Resale Property-Budgeted	1130	Resale Property-Budgeted	55110	Office Equipment - Purchase	D	2,906.95			
1130	Resale Property-Budgeted	1130	Resale Property-Budgeted	55230	Shop Equipment	D	6,750.00			
1130	Resale Property-Budgeted	1130	Resale Property-Budgeted	55380	Office Equipment - Lease	D	6,082.44			
1130	Resale Property-Budgeted	1130	Resale Property-Budgeted	55390	Copier - Lease	D	4,399.67			
1140	Treasurer Mortgage Fee Fund	1140	Treasurer Mortgage Fee Fund	54459	Copier Charges	D	34.97			
1140	Treasurer Mortgage Fee Fund	1140	Treasurer Mortgage Fee Fund	55060	Building & Grounds - Repair/Parts/Maintenance	D	29,737.30			
1140	Treasurer Mortgage Fee Fund	1140	Treasurer Mortgage Fee Fund	55390	Copier - Lease	D	127.50			

Oklahoma County, Oklahoma OMB 2 CFR 200 Cost Allocation Plan and Indirect Cost Rate Proposal for FY2026  
(Based on Expenditures for FY2024 )

Fund	Fund Description	Dept.	Department Description	Acct	Account Description	CS/D	Amount	Salaries and Wages	Unallowable Costs	Central Service Costs
1150	County Clerk Lien Fee Fund	1150	County Clerk Lien Fee Fund	51001	Full Time Salaries and Wages	D	38,171.64	38,171.64		
1150	County Clerk Lien Fee Fund	1150	County Clerk Lien Fee Fund	52010	FICA	D	2,622.76			
1150	County Clerk Lien Fee Fund	1150	County Clerk Lien Fee Fund	52032	Retirement - Department Defined Contribution	D	4,310.58			
1150	County Clerk Lien Fee Fund	1150	County Clerk Lien Fee Fund	52045	Department - Health and Life Premiums	D	12,066.00			
1150	County Clerk Lien Fee Fund	1150	County Clerk Lien Fee Fund	53010	Monthly Mileage/In State	D	494.06			
1150	County Clerk Lien Fee Fund	1150	County Clerk Lien Fee Fund	53030	Lodging/In State	D	10,195.90			
1150	County Clerk Lien Fee Fund	1150	County Clerk Lien Fee Fund	53040	Meals/In State	D	2,864.00			
1150	County Clerk Lien Fee Fund	1150	County Clerk Lien Fee Fund	53080	Incidentals/In State	D	782.70			
1150	County Clerk Lien Fee Fund	1150	County Clerk Lien Fee Fund	53060	Registration Fees/In State	D	4,473.00			
1150	County Clerk Lien Fee Fund	1150	County Clerk Lien Fee Fund	53070	Airfare/Out State	D	4,461.26			
1150	County Clerk Lien Fee Fund	1150	County Clerk Lien Fee Fund	54011	Postage	D	20,000.00			
1150	County Clerk Lien Fee Fund	1150	County Clerk Lien Fee Fund	54012	Printing and Binding	D	11,335.60			
1150	County Clerk Lien Fee Fund	1150	County Clerk Lien Fee Fund	54030	Subscriptions	D	2,431.00			
1150	County Clerk Lien Fee Fund	1150	County Clerk Lien Fee Fund	54031	Premiums & Awards	D	1,196.00			
1150	County Clerk Lien Fee Fund	1150	County Clerk Lien Fee Fund	54033	Freight and Storage	D	370.00			
1150	County Clerk Lien Fee Fund	1150	County Clerk Lien Fee Fund	54035	Bottled Water	D	6,594.80			
1150	County Clerk Lien Fee Fund	1150	County Clerk Lien Fee Fund	54157	Equipment - Vendors Maintenance	D	2,284.18			
1150	County Clerk Lien Fee Fund	1150	County Clerk Lien Fee Fund	54202	Kitchen Supplies	D	4,306.66			
1150	County Clerk Lien Fee Fund	1150	County Clerk Lien Fee Fund	54351	Office Supplies	D	137.25			
1150	County Clerk Lien Fee Fund	1150	County Clerk Lien Fee Fund	54354	Printing Supplies	D	2,300.08			
1150	County Clerk Lien Fee Fund	1150	County Clerk Lien Fee Fund	54455	Professional Services - Other	D	59,678.50			
1150	County Clerk Lien Fee Fund	1150	County Clerk Lien Fee Fund	54456	Services Other	D	1,693.63			
1150	County Clerk Lien Fee Fund	1150	County Clerk Lien Fee Fund	54458	Professional Services - Training & Education	D	269.96			
1150	County Clerk Lien Fee Fund	1150	County Clerk Lien Fee Fund	55060	Building & Grounds - Repair/Parts/Maintenance	D	454.01			
1150	County Clerk Lien Fee Fund	1150	County Clerk Lien Fee Fund	55070	Building & Grounds - Fixtures/Permanent	D	8,828.54			
1150	County Clerk Lien Fee Fund	1150	County Clerk Lien Fee Fund	55080	Computer Equipment - Purchases	D	72,242.93			
1150	County Clerk Lien Fee Fund	1150	County Clerk Lien Fee Fund	55095	Computer Software	D	28,570.44			
1150	County Clerk Lien Fee Fund	1150	County Clerk Lien Fee Fund	55100	Furniture	D	5,185.52			
1150	County Clerk Lien Fee Fund	1150	County Clerk Lien Fee Fund	55110	Office Equipment - Purchase	D	746.56			
1150	County Clerk Lien Fee Fund	1150	County Clerk Lien Fee Fund	55260	Kitchen Equipment	D	4,300.00			
1150	County Clerk Lien Fee Fund	1150	County Clerk Lien Fee Fund	55330	Other Equipment	D	13,290.18			
1150	County Clerk Lien Fee Fund	1150	County Clerk Lien Fee Fund	55380	Office Equipment - Lease	D	9,122.52			
1150	County Clerk Lien Fee Fund	1150	County Clerk Lien Fee Fund	55400	Signs and Picture Frames	D	1,260.48			
1151	County Clerk's UCC Central Filing Fund	1151	County Clerk's UCC Central Filing	51001	Full Time Salaries and Wages	D	435,861.82	435,861.82		
1151	County Clerk's UCC Central Filing Fund	1151	County Clerk's UCC Central Filing	51003	Over Time Salaries and Wages	D	0.12	0.12		
1151	County Clerk's UCC Central Filing Fund	1151	County Clerk's UCC Central Filing	52010	FICA	D	31,913.56			
1151	County Clerk's UCC Central Filing Fund	1151	County Clerk's UCC Central Filing	52032	Retirement - Department Defined Contribution	D	50,888.80			
1151	County Clerk's UCC Central Filing Fund	1151	County Clerk's UCC Central Filing	52045	Department - Health and Life Premiums	D	92,522.00			
1151	County Clerk's UCC Central Filing Fund	1151	County Clerk's UCC Central Filing	54157	Equipment - Vendors Maintenance	D	2,178.77			
1151	County Clerk's UCC Central Filing Fund	1151	County Clerk's UCC Central Filing	54455	Professional Services - Other	D	18,599.00			
1151	County Clerk's UCC Central Filing Fund	1151	County Clerk's UCC Central Filing	55390	Copier - Lease	D	8,995.03			
1160	Sheriff Service Fee Fund	5000	Sheriff	51001	Full Time Salaries and Wages	D	2,346,460.86	2,346,460.86		
1160	Sheriff Service Fee Fund	5000	Sheriff	51003	Over Time Salaries and Wages	D	130,294.92	130,294.92		
1160	Sheriff Service Fee Fund	5000	Sheriff	52010	FICA	D	179,819.73			
1160	Sheriff Service Fee Fund	5000	Sheriff	52032	Retirement - Department Defined Contribution	D	270,482.54			
1160	Sheriff Service Fee Fund	5000	Sheriff	52045	Department - Health and Life Premiums	D	696,540.00			
1160	Sheriff Service Fee Fund	5000	Sheriff	53030	Lodging/In State	D	46,629.67			
1160	Sheriff Service Fee Fund	5000	Sheriff	53060	Registration Fees/In State	D	23,543.00			
1160	Sheriff Service Fee Fund	5000	Sheriff	53070	Airfare/Out State	D	9,796.92			
1160	Sheriff Service Fee Fund	5000	Sheriff	53080	Incidentals/In State	D	254.15			
1160	Sheriff Service Fee Fund	5000	Sheriff	54011	Postage	D	5,160.55			
1160	Sheriff Service Fee Fund	5000	Sheriff	54012	Printing and Binding	D	360.00			
1160	Sheriff Service Fee Fund	5000	Sheriff	54013	Advertising	D	996.35			
1160	Sheriff Service Fee Fund	5000	Sheriff	54016	License & Permit Fees	D	439.00			
1160	Sheriff Service Fee Fund	5000	Sheriff	54017	Memberships	D	14,520.86			
1160	Sheriff Service Fee Fund	5000	Sheriff	54021	Telecommunications Services	D	69,808.98			
1160	Sheriff Service Fee Fund	5000	Sheriff	54022	Utilities - Gas	D	6,818.08			
1160	Sheriff Service Fee Fund	5000	Sheriff	54023	Utilities - Electric	D	23,062.14			
1160	Sheriff Service Fee Fund	5000	Sheriff	54024	Utilities - Sewer and Water	D	5,729.82			
1160	Sheriff Service Fee Fund	5000	Sheriff	54029	Transportation	D	35,030.70			
1160	Sheriff Service Fee Fund	5000	Sheriff	54030	Subscriptions	D	30,844.94			
1160	Sheriff Service Fee Fund	5000	Sheriff	54033	Freight and Storage	D	1,195.36			
1160	Sheriff Service Fee Fund	5000	Sheriff	54035	Bottled Water	D	2,381.48			
1160	Sheriff Service Fee Fund	5000	Sheriff	54045	Parking Fees	D	34,944.00			
1160	Sheriff Service Fee Fund	5000	Sheriff	54102	Office Space	D	150.00			
1160	Sheriff Service Fee Fund	5000	Sheriff	54109	Equipment - Other	D	12,511.89			

Oklahoma County, Oklahoma OMB 2 CFR 200 Cost Allocation Plan and Indirect Cost Rate Proposal for FY2026  
(Based on Expenditures for FY2024 )

Fund	Fund Description	Dept.	Department Description	Acct	Account Description	CS/D	Amount	Salaries and Wages	Unallowable Costs	Central Service Costs
1160	Sheriff Service Fee Fund	5000	Sheriff	54111	Software Assurance Upgrade	D	28,609.68			
1160	Sheriff Service Fee Fund	5000	Sheriff	54112	Software as a Service - SAAS	D	9,442.51			
1160	Sheriff Service Fee Fund	5000	Sheriff	54113	Software Annual License Renew	D	90,436.32			
1160	Sheriff Service Fee Fund	5000	Sheriff	54151	Building & Grounds - Maintenance Supplies	D	17,826.49			
1160	Sheriff Service Fee Fund	5000	Sheriff	54152	Building & Grounds - Repair Supplies	D	90.21			
1160	Sheriff Service Fee Fund	5000	Sheriff	54155	Telecommunications - Repair Supplies In House	D	20,790.07			
1160	Sheriff Service Fee Fund	5000	Sheriff	54156	Bldg & Grounds-Maintenance	D	15,901.22			
1160	Sheriff Service Fee Fund	5000	Sheriff	54157	Equipment - Vendors Maintenance	D	12,812.96			
1160	Sheriff Service Fee Fund	5000	Sheriff	54158	Computer/Copier Maintenance	D	1,592.10			
1160	Sheriff Service Fee Fund	5000	Sheriff	54162	Equipment Repair	D	1,902.00			
1160	Sheriff Service Fee Fund	5000	Sheriff	54165	Vehicle - Vendors Repair	D	117,221.60			
1160	Sheriff Service Fee Fund	5000	Sheriff	54173	Solid Waste	D	1,432.13			
1160	Sheriff Service Fee Fund	5000	Sheriff	54201	Food	D	10,000.00			
1160	Sheriff Service Fee Fund	5000	Sheriff	54202	Kitchen Supplies	D	3,747.95			
1160	Sheriff Service Fee Fund	5000	Sheriff	54203	Medical Supplies	D	121.68			
1160	Sheriff Service Fee Fund	5000	Sheriff	54208	Lab Supplies	D	6,950.84			
1160	Sheriff Service Fee Fund	5000	Sheriff	54211	Motor Vehicle Fuel - Unleaded	D	219,656.71			
1160	Sheriff Service Fee Fund	5000	Sheriff	54213	Oil, Grease, Lube and Other Supplies	D	19,149.50			
1160	Sheriff Service Fee Fund	5000	Sheriff	54214	Shop Supplies	D	3,932.13			
1160	Sheriff Service Fee Fund	5000	Sheriff	54218	Janitorial Supplies	D	135.50			
1160	Sheriff Service Fee Fund	5000	Sheriff	54222	Miscellaneous Supplies	D	2,585.00			
1160	Sheriff Service Fee Fund	5000	Sheriff	54301	Uniform and Wearing Apparel	D	85,044.97			
1160	Sheriff Service Fee Fund	5000	Sheriff	54302	Safety Supplies - Exting Ammo etc.	D	7,746.51			
1160	Sheriff Service Fee Fund	5000	Sheriff	54308	Law Enforcement Supplies	D	96,834.79			
1160	Sheriff Service Fee Fund	5000	Sheriff	54351	Office Supplies	D	36,269.31			
1160	Sheriff Service Fee Fund	5000	Sheriff	54354	Printing Supplies	D	144.00			
1160	Sheriff Service Fee Fund	5000	Sheriff	54355	Paper	D	4,920.00			
1160	Sheriff Service Fee Fund	5000	Sheriff	54401	Motor Vehicle Supplies	D	144,608.52			
1160	Sheriff Service Fee Fund	5000	Sheriff	54402	Motor Vehicle Passenger - Parts	D	6,578.00			
1160	Sheriff Service Fee Fund	5000	Sheriff	54403	Motor Vehicle Other - Parts	D	305.64			
1160	Sheriff Service Fee Fund	5000	Sheriff	54453	Professional Services - Medical	D	1,754.51			
1160	Sheriff Service Fee Fund	5000	Sheriff	54455	Professional Services - Other	D	42,881.20			
1160	Sheriff Service Fee Fund	5000	Sheriff	54456	Services Other	D	14,611.37			
1160	Sheriff Service Fee Fund	5000	Sheriff	54458	Professional Services - Training & Education	D	4,720.00			
1160	Sheriff Service Fee Fund	5000	Sheriff	54459	Copier Charges	D	16,417.09			
1160	Sheriff Service Fee Fund	5000	Sheriff	55080	Computer Equipment - Purchases	D	7,717.32			
1160	Sheriff Service Fee Fund	5000	Sheriff	55100	Furniture	D	589.00			
1160	Sheriff Service Fee Fund	5000	Sheriff	55220	Law Enforcement Equipment	D	30,706.18			
1160	Sheriff Service Fee Fund	5000	Sheriff	55250	Safety Equipment	D	594.00			
1160	Sheriff Service Fee Fund	5000	Sheriff	55260	Kitchen Equipment	D	2,133.48			
1160	Sheriff Service Fee Fund	5000	Sheriff	55310	Video Equipment	D	14,442.58			
1160	Sheriff Service Fee Fund	5000	Sheriff	55390	Copier - Lease	D	44,636.69			
1160	Sheriff Service Fee Fund	5010	Courthouse Security Fee	51001	Full Time Salaries and Wages	D	177,850.76	177,850.76		
1160	Sheriff Service Fee Fund	5010	Courthouse Security Fee	52010	FICA	D	13,330.52			
1160	Sheriff Service Fee Fund	5010	Courthouse Security Fee	52032	Retirement - Department Defined Contribution	D	21,225.10			
1160	Sheriff Service Fee Fund	5010	Courthouse Security Fee	52045	Department - Health and Life Premiums	D	20,952.00			
1160	Sheriff Service Fee Fund	5010	Courthouse Security Fee	54016	License & Permit Fees	D	1,568.26			
1161	Sheriff's Special Revenue	5000	Sheriff	54029	Transportation	D	4,450.87			
1161	Sheriff's Special Revenue	5000	Sheriff	54109	Equipment - Other	D	9,628.00			
1161	Sheriff's Special Revenue	5000	Sheriff	54157	Equipment - Vendors Maintenance	D	6,440.00			
1161	Sheriff's Special Revenue	5000	Sheriff	54205	Training Supplies	D	3,384.80			
1161	Sheriff's Special Revenue	5000	Sheriff	54211	Motor Vehicle Fuel - Unleaded	D	15,546.37			
1161	Sheriff's Special Revenue	5000	Sheriff	55100	Furniture	D	7,211.00			
1161	Sheriff's Special Revenue	5100	Training	53030	Lodging/In State	D	1,152.14			
1161	Sheriff's Special Revenue	5100	Training	53060	Registration Fees/In State	D	1,330.00			
1161	Sheriff's Special Revenue	5100	Training	54016	License & Permit Fees	D	704.00			
1161	Sheriff's Special Revenue	5100	Training	54033	Freight and Storage	D	1,278.71			
1161	Sheriff's Special Revenue	5100	Training	54109	Equipment - Other	D	12,098.75			
1161	Sheriff's Special Revenue	5100	Training	54151	Building & Grounds - Maintenance Supplies	D	196.29			
1161	Sheriff's Special Revenue	5100	Training	54165	Vehicle - Vendors Repair	D	2,179.40			
1161	Sheriff's Special Revenue	5100	Training	54203	Medical Supplies	D	4,987.89			
1161	Sheriff's Special Revenue	5100	Training	54205	Training Supplies	D	2,648.50			
1161	Sheriff's Special Revenue	5100	Training	54308	Law Enforcement Supplies	D	8,761.61			
1161	Sheriff's Special Revenue	5100	Training	54351	Office Supplies	D	9,508.50			
1161	Sheriff's Special Revenue	5100	Training	55070	Building & Grounds - Fixtures/Permanent	D	1,400.00			
1161	Sheriff's Special Revenue	5110	Federal Asset Forfeiture	54301	Uniform and Wearing Apparel	D	13,263.00			

Oklahoma County, Oklahoma OMB 2 CFR 200 Cost Allocation Plan and Indirect Cost Rate Proposal for FY2026  
(Based on Expenditures for FY2024 )

Fund	Fund Description	Dept.	Department Description	Acct	Account Description	CS/D	Amount	Salaries and Wages	Unallowable Costs	Central Service Costs
1161	Sheriff's Special Revenue	5110	Federal Asset Forfeiture	54308	Law Enforcement Supplies	D	10,294.56			
1161	Sheriff's Special Revenue	5110	Federal Asset Forfeiture	54401	Motor Vehicle Supplies	D	175.00			
1161	Sheriff's Special Revenue	5120	Drug Enforcement	54021	Telecommunications Services	D	31,350.00			
1161	Sheriff's Special Revenue	5120	Drug Enforcement	54109	Equipment - Other	D	7,419.00			
1161	Sheriff's Special Revenue	5120	Drug Enforcement	54112	Software as a Service - SAAS	D	227,242.75			
1161	Sheriff's Special Revenue	5120	Drug Enforcement	54113	Software Annual License Renew	D	9,356.25			
1161	Sheriff's Special Revenue	5120	Drug Enforcement	54157	Equipment - Vendors Maintenance	D	23,723.34			
1161	Sheriff's Special Revenue	5120	Drug Enforcement	54165	Vehicle - Vendors Repair	D	27,968.48			
1161	Sheriff's Special Revenue	5120	Drug Enforcement	54208	Lab Supplies	D	7,462.50			
1161	Sheriff's Special Revenue	5120	Drug Enforcement	54211	Motor Vehicle Fuel - Unleaded	D	43,760.75			
1161	Sheriff's Special Revenue	5120	Drug Enforcement	54301	Uniform and Wearing Apparel	D	2,165.00			
1161	Sheriff's Special Revenue	5120	Drug Enforcement	54308	Law Enforcement Supplies	D	29,333.29			
1161	Sheriff's Special Revenue	5120	Drug Enforcement	54401	Motor Vehicle Supplies	D	4,012.25			
1161	Sheriff's Special Revenue	5120	Drug Enforcement	54453	Professional Services - Medical	D	456.00			
1161	Sheriff's Special Revenue	5120	Drug Enforcement	54458	Professional Services - Training & Education	D	1,544.76			
1161	Sheriff's Special Revenue	5120	Drug Enforcement	55170	Motor Vehicle - Passenger	D	45,796.00			
1161	Sheriff's Special Revenue	5120	Drug Enforcement	55220	Law Enforcement Equipment	D	9,500.00			
1161	Sheriff's Special Revenue	5120	Drug Enforcement	55390	Copier - Lease	D	6,300.10			
1161	Sheriff's Special Revenue	5150	9-1-1	51001	Full Time Salaries and Wages	D	68,783.38	68,783.38		
1161	Sheriff's Special Revenue	5150	9-1-1	51003	Over Time Salaries and Wages	D	31.01	31.01		
1161	Sheriff's Special Revenue	5150	9-1-1	52010	FICA	D	5,106.72			
1161	Sheriff's Special Revenue	5150	9-1-1	52032	Retirement - Department Defined Contribution	D	8,253.97			
1161	Sheriff's Special Revenue	5150	9-1-1	52045	Department - Health and Life Premiums	D	11,349.00			
1161	Sheriff's Special Revenue	5150	9-1-1	54108	Equipment - Telecommunications	D	4,442.10			
1161	Sheriff's Special Revenue	5150	9-1-1	54109	Equipment - Other	D	8,856.00			
1161	Sheriff's Special Revenue	5150	9-1-1	54112	Software as a Service - SAAS	D	8,190.00			
1161	Sheriff's Special Revenue	5150	9-1-1	54155	Telecommunications - Repair Supplies In House	D	13,921.00			
1161	Sheriff's Special Revenue	5150	9-1-1	54205	Training Supplies	D	948.06			
1162	Sheriff Grant Fund	5050	OHSO Traffic Safety	51001	Full Time Salaries and Wages	D	122,428.06	122,428.06		
1162	Sheriff Grant Fund	5050	OHSO Traffic Safety	51003	Over Time Salaries and Wages	D	70,007.47	70,007.47		
1162	Sheriff Grant Fund	5050	OHSO Traffic Safety	52010	FICA	D	14,408.82			
1162	Sheriff Grant Fund	5050	OHSO Traffic Safety	52032	Retirement - Department Defined Contribution	D	14,612.05			
1162	Sheriff Grant Fund	5050	OHSO Traffic Safety	52045	Department - Health and Life Premiums	D	24,132.00			
1162	Sheriff Grant Fund	5050	OHSO Traffic Safety	54165	Vehicle - Vendors Repair	D	295.55			
1162	Sheriff Grant Fund	5050	OHSO Traffic Safety	54222	Miscellaneous Supplies	D	873.40			
1162	Sheriff Grant Fund	5050	OHSO Traffic Safety	54308	Law Enforcement Supplies	D	155.58			
1162	Sheriff Grant Fund	5060	JAG	54456	Services Other	D	116,068.97			
1162	Sheriff Grant Fund	5060	JAG	55370	Other Services	D	76,043.03			
1162	Sheriff Grant Fund	5130	Telmate Technology Grant	54109	Equipment - Other	D	33,405.24			
1162	Sheriff Grant Fund	5140	Homeland Security Grant	55220	Law Enforcement Equipment	D	13,480.80			
1162	Sheriff Grant Fund	5140	Homeland Security Grant	55370	Other Services	D	7,070.00			
1231	Juvenile Probation Fee	1231	Juvenile Probation Fee	54453	Professional Services - Medical	D	3,062.50			
1233	Juvenile Grant Fund	1233	Juvenile Grant	51001	Full Time Salaries and Wages	D	132,341.19	132,341.19		
1233	Juvenile Grant Fund	1233	Juvenile Grant	52010	FICA	D	9,725.12			
1233	Juvenile Grant Fund	1233	Juvenile Grant	52032	Retirement - Department Defined Contribution	D	15,881.01			
1233	Juvenile Grant Fund	1233	Juvenile Grant	52045	Department - Health and Life Premiums	D	30,321.00			
1233	Juvenile Grant Fund	1233	Juvenile Grant	53030	Lodging/In State	D	645.32			
1233	Juvenile Grant Fund	1233	Juvenile Grant	53040	Meals/In State	D	320.00			
1233	Juvenile Grant Fund	1233	Juvenile Grant	53080	Incidentals/In State	D	158.93			
1233	Juvenile Grant Fund	1233	Juvenile Grant	54016	License & Permit Fees	D	50.55			
1233	Juvenile Grant Fund	1233	Juvenile Grant	54046	Cellular Telephone	D	1,400.00			
1233	Juvenile Grant Fund	1233	Juvenile Grant	54109	Equipment - Other	D	4,374.38			
1233	Juvenile Grant Fund	1233	Juvenile Grant	54205	Training Supplies	D	129.89			
1233	Juvenile Grant Fund	1233	Juvenile Grant	54455	Professional Services - Other	D	53,941.21			
1233	Juvenile Grant Fund	1233	Juvenile Grant	55080	Computer Equipment - Purchases	D	1,889.29			
1233	Juvenile Grant Fund	1233	Juvenile Grant	55170	Motor Vehicle - Passenger	D	24,184.00			
1233	Juvenile Grant Fund	1233	Juvenile Grant	55180	Motor Vehicle - other	D	572.00			
1251	Emergency Management Fund	1251	Emergency Management Fund	54033	Freight and Storage	D	40.00			
1251	Emergency Management Fund	1251	Emergency Management Fund	54109	Equipment - Other	D	875.26			
1251	Emergency Management Fund	1251	Emergency Management Fund	54112	Software as a Service - SAAS	D	4,620.00			
1251	Emergency Management Fund	1251	Emergency Management Fund	54222	Miscellaneous Supplies	D	65.00			
1251	Emergency Management Fund	1251	Emergency Management Fund	54455	Professional Services - Other	D	4,255.25			
1251	Emergency Management Fund	1251	Emergency Management Fund	55065	Building and Grounds - Equipment	D	3,600.00			
1251	Emergency Management Fund	1251	Emergency Management Fund	55200	Telecommunications Equipment	D	3,150.00			
1251	Emergency Management Fund	1251	Emergency Management Fund	55310	Video Equipment	D	795.00			
1251	Emergency Management Fund	1251	Emergency Management Fund	55330	Other Equipment	D	1,655.00			

Oklahoma County, Oklahoma OMB 2 CFR 200 Cost Allocation Plan and Indirect Cost Rate Proposal for FY2026  
(Based on Expenditures for FY2024 )

Fund	Fund Description	Dept.	Department Description	Acct	Account Description	CS/D	Amount	Salaries and Wages	Unallowable Costs	Central Service Costs
1260	Community Service Fee	1260	Community Service Fee	53020	Mileage/In State	D	84.29			
1260	Community Service Fee	1260	Community Service Fee	54030	Subscriptions	D	2,973.00			
1260	Community Service Fee	1260	Community Service Fee	54035	Bottled Water	D	880.53			
1260	Community Service Fee	1260	Community Service Fee	54045	Parking Fees	D	17,772.00			
1260	Community Service Fee	1260	Community Service Fee	54048	Parking Transponder Deposit	D	40.00			
1260	Community Service Fee	1260	Community Service Fee	54203	Medical Supplies	D	3,216.00			
1260	Community Service Fee	1260	Community Service Fee	54351	Office Supplies	D	3,381.48			
1260	Community Service Fee	1260	Community Service Fee	54455	Professional Services - Other	D	72,125.81			
1260	Community Service Fee	1260	Community Service Fee	54459	Copier Charges	D	1,645.31			
1260	Community Service Fee	1260	Community Service Fee	55080	Computer Equipment - Purchases	D	354.25			
1260	Community Service Fee	1260	Community Service Fee	55100	Furniture	D	1,388.99			
1260	Community Service Fee	1260	Community Service Fee	55390	Copier - Lease	D	3,376.64			
1280	Drug Court Fund	1280	Drug Court Fund	51001	Full Time Salaries and Wages	D	234,650.00	234,650.00		
1280	Drug Court Fund	1280	Drug Court Fund	52010	FICA	D	17,260.23			
1280	Drug Court Fund	1280	Drug Court Fund	52032	Retirement - Department Defined Contribution	D	24,858.00			
1280	Drug Court Fund	1280	Drug Court Fund	52045	Department - Health and Life Premiums	D	41,209.62			
1280	Drug Court Fund	1280	Drug Court Fund	52050	Workers Compensation	D	514.40			
1280	Drug Court Fund	1280	Drug Court Fund	54351	Office Supplies	D	3,585.24			
1280	Drug Court Fund	1280	Drug Court Fund	54459	Copier Charges	D	1,961.74			
1280	Drug Court Fund	1280	Drug Court Fund	55390	Copier - Lease	D	2,123.66			
1282	Mental Health Court Fund	1282	Mental Health Court Fund	54351	Office Supplies	D	1,301.93			
1282	Mental Health Court Fund	1282	Mental Health Court Fund	54459	Copier Charges	D	2,313.26			
1290	SHINE Program Fund	1290	SHINE Program Fund	51001	Full Time Salaries and Wages	D	170,271.82	170,271.82		
1290	SHINE Program Fund	1290	SHINE Program Fund	51002	Part Time Salaries and Wages	D	3,620.00	3,620.00		
1290	SHINE Program Fund	1290	SHINE Program Fund	51003	Over Time Salaries and Wages	D	7,738.12	7,738.12		
1290	SHINE Program Fund	1290	SHINE Program Fund	52010	FICA	D	13,350.62			
1290	SHINE Program Fund	1290	SHINE Program Fund	52032	Retirement - Department Defined Contribution	D	16,914.20			
1290	SHINE Program Fund	1290	SHINE Program Fund	52045	Department - Health and Life Premiums	D	41,062.00			
1290	SHINE Program Fund	1290	SHINE Program Fund	54046	Cellular Telephone	D	3,252.80			
1290	SHINE Program Fund	1290	SHINE Program Fund	54109	Equipment - Other	D	6,732.31			
1290	SHINE Program Fund	1290	SHINE Program Fund	54222	Miscellaneous Supplies	D	22,996.56			
1290	SHINE Program Fund	1290	SHINE Program Fund	54301	Uniform and Wearing Apparel	D	528.52			
1290	SHINE Program Fund	1290	SHINE Program Fund	55170	Motor Vehicle - Passenger	D	37,288.13			
1415	American Rescue Plan	1415	American Rescue Plan	54455	Professional Services - Other	D	549,000.00			
2010	Capital Improvement-Regular	2010	Capital Improvement-Regular	51001	Full Time Salaries and Wages	D	7,200.00	7,200.00		
2010	Capital Improvement-Regular	2010	Capital Improvement-Regular	51003	Over Time Salaries and Wages	D	13,938.85	13,938.85		
2010	Capital Improvement-Regular	2010	Capital Improvement-Regular	52010	FICA	D	1,617.15			
2010	Capital Improvement-Regular	2010	Capital Improvement-Regular	55060	Building & Grounds - Repair/Parts/Maintenance	D	55,524.89			
2010	Capital Improvement-Regular	2010	Capital Improvement-Regular	55370	Other Services	D	780,438.00			
3010	Dept Service Fund	3010	Dept Service Fund	54044	Bond Interest	D	7,356,450.00			
5010	Defined Benefit	5010	Defined Benefit	51001	Full Time Salaries and Wages	D	1,240,219.43	1,240,219.43		
6050	Law Library	6050	Law Library	51001	Full Time Salaries and Wages	D	184,219.18	184,219.18		
6050	Law Library	6050	Law Library	51002	Part Time Salaries and Wages	D	10,071.25	10,071.25		
6050	Law Library	6050	Law Library	51003	Over Time Salaries and Wages	D	6.06	6.06		
6050	Law Library	6050	Law Library	52010	FICA	D	14,177.42			
6050	Law Library	6050	Law Library	52032	Retirement - Department Defined Contribution	D	19,562.09			
6050	Law Library	6050	Law Library	52040	Unemployment	D	1,053.77			
6050	Law Library	6050	Law Library	52045	Department - Health and Life Premiums	D	51,988.00			
6050	Law Library	6050	Law Library	52050	Workers Compensation	D	350.00			
6050	Law Library	6050	Law Library	53030	Lodging/In State	D	2,134.68			
6050	Law Library	6050	Law Library	53060	Registration Fees/In State	D	1,090.00			
6050	Law Library	6050	Law Library	53080	Incidentals/In State	D	1,399.93			
6050	Law Library	6050	Law Library	54011	Postage	D	276.00			
6050	Law Library	6050	Law Library	54017	Memberships	D	367.00			
6050	Law Library	6050	Law Library	54028	Books	D	97,978.22			
6050	Law Library	6050	Law Library	54040	Publications	D	64,042.91			
6050	Law Library	6050	Law Library	54045	Parking Fees	D	5,430.10			
6050	Law Library	6050	Law Library	54048	Parking Transponder Deposit	D	20.00			
6050	Law Library	6050	Law Library	54109	Equipment - Other	D	400.76			
6050	Law Library	6050	Law Library	54158	Computer/Copier Maintenance	D	7,345.34			
6050	Law Library	6050	Law Library	54351	Office Supplies	D	6,665.56			
6050	Law Library	6050	Law Library	54355	Paper	D	4,038.50			
6050	Law Library	6050	Law Library	54459	Copier Charges	D	396.00			
6050	Law Library	6050	Law Library	55075	Building Renovation	D	242.00			
6050	Law Library	6050	Law Library	55390	Copier - Lease	D	3,960.00			
6160	Public Defender Payroll	6160	Public Defender Payroll	51001	Full Time Salaries and Wages	D	4,798,079.96	4,798,079.96		

Oklahoma County, Oklahoma OMB 2 CFR 200 Cost Allocation Plan and Indirect Cost Rate Proposal for FY2026  
(Based on Expenditures for FY2024 )

Fund	Fund Description	Dept.	Department Description	Acct	Account Description	CS/D	Amount	Salaries and Wages	Unallowable Costs	Central Service Costs
6160	Public Defender Payroll	6160	Public Defender Payroll	51002	Part Time Salaries and Wages	D	188,491.46	188,491.46		
6160	Public Defender Payroll	6160	Public Defender Payroll	52010	FICA	D	366,542.48			
6160	Public Defender Payroll	6160	Public Defender Payroll	52032	Retirement - Department Defined Contribution	D	542,184.85			
6160	Public Defender Payroll	6160	Public Defender Payroll	52045	Department - Health and Life Premiums	D	978,457.00			
7030	PBA	7030	PBA	51001	Full Time Salaries and Wages	D	290,207.85	290,207.85		
7030	PBA	7030	PBA	52010	FICA	D	20,545.75			
7030	PBA	7030	PBA	52032	Retirement - Department Defined Contribution	D	34,674.94			
7030	PBA	7030	PBA	52045	Department - Health and Life Premiums	D	116,108.00			
7030	PBA	7030	PBA	54014	Financial Services	D	100,450.00			
7030	PBA	7030	PBA	54016	License & Permit Fees	D	2,224.97			
7030	PBA	7030	PBA	54019	Premiums - Property Insurance	D	264,180.00			
7030	PBA	7030	PBA	54020	Premiums - Other Insurance	D	9,950.00			
7030	PBA	7030	PBA	54022	Utilities - Gas	D	12,925.50			
7030	PBA	7030	PBA	54023	Utilities - Electric	D	216,946.27			
7030	PBA	7030	PBA	54024	Utilities - Sewer and Water	D	24,708.33			
7030	PBA	7030	PBA	54026	Utilities - Other	D	21,221.73			
7030	PBA	7030	PBA	54033	Freight and Storage	D	25.00			
7030	PBA	7030	PBA	54045	Parking Fees	D	5,792.00			
7030	PBA	7030	PBA	54046	Cellular Telephone	D	4,500.00			
7030	PBA	7030	PBA	54151	Building & Grounds - Maintenance Supplies	D	14,158.64			
7030	PBA	7030	PBA	54152	Building & Grounds - Repair Supplies	D	2,644.36			
7030	PBA	7030	PBA	54153	Equipment - Repair Supplies In House	D	1,022.72			
7030	PBA	7030	PBA	54156	Bldg & Grounds-Maintenance	D	78,204.34			
7030	PBA	7030	PBA	54157	Equipment - Vendors Maintenance	D	27,069.17			
7030	PBA	7030	PBA	54161	Building & Grounds - Vendors Repairs	D	103,321.53			
7030	PBA	7030	PBA	54162	Equipment - Vendors Repair	D	5,707.68			
7030	PBA	7030	PBA	54201	Food	D	173.71			
7030	PBA	7030	PBA	54211	Motor Vehicle Fuel - Unleaded	D	2,148.99			
7030	PBA	7030	PBA	54218	Janitorial Supplies	D	44,859.71			
7030	PBA	7030	PBA	54222	Miscellaneous Supplies	D	773.00			
7030	PBA	7030	PBA	54301	Uniform and Wearing Apparel	D	170.95			
7030	PBA	7030	PBA	54351	Office Supplies	D	1,164.58			
7030	PBA	7030	PBA	54452	Professional Services - Auditing & Accounting	D	16,161.70			
7030	PBA	7030	PBA	54455	Professional Services - Other	D	2,115,943.18			
7030	PBA	7030	PBA	54456	Services Other	D	38,157.75			
7030	PBA	7030	PBA	54459	Copier Charges	D	69.53			
7030	PBA	7030	PBA	55060	Building & Grounds - Repair/Parts/Maintenance	D	135,066.92			
7030	PBA	7030	PBA	55070	Building & Grounds - Fixtures/Permanent	D	3,870.00			
7030	PBA	7030	PBA	55080	Computer Equipment - Purchases	D	3,833.74			
7030	PBA	7030	PBA	55170	Motor Vehicle - Passenger	D	45,095.60			
7030	PBA	7030	PBA	55370	Other Services	D	396,000.00			
7030	PBA	7030	PBA	55390	Copier - Lease	D	804.63			
<b>Grand Total</b>							<b>204,974,848.53</b>	<b>52,950,761.89</b>	<b>72,237,119.20</b>	<b>19,864,739.78</b>

\*Data obtained from the Oklahoma County Expense Summary provided by the County Clerks Office, Finance Division

Depreciation Schedule 486,690.56

**Total Central Service 20,351,430.34**

**Indirect Cost Rate Calculation**  
(Prior to Carry forward)

<u>Total Central Service Costs</u>	=	<u>20,351,430.34</u>
Total Salaries and Wages		52,950,761.89

**ICR Prior to Carry forward = 38.43%**

**Indirect Cost Rate Calculation**  
(With Carry forward)

<u>Total Central Service Costs</u>	=	<u>11,076,909.40</u>
Total Salaries and Wages		52,950,761.89

**ICR with Carry forward = 20.92%**

**Carry forward Calculation**

FY2024 ICR	<b>55.95%</b>
FY2024 Salaries and Wages	<b>52,950,761.89</b>
<b>Recovered Costs</b>	<b>29,625,951.28</b>
Actual Central Service Costs	<b>20,351,430.34</b>
Recovered Costs	<b>29,625,951.28</b>
<b>Over (Under Recovery)</b>	<b>9,274,520.94</b>

Oklahoma County, Oklahoma OMB 2 CFR 200 Cost Allocation Plan and Indirect Cost Rate Proposal for FY2026  
(Based on Expenditures for FY2024 )

## Fixed Asset Record with Straight Line Depreciation

Data obtained from the Oklahoma County Capital Asset Detail

Asset Name	Asset Class	Department	Asset No.	Acquisition Date	Acquisition Cost	Estimated Useful Life (Years)	Estimated Salvage Value	2024
REPLACE CEILING TILE-ANNEX	Building	1500 Treasurer	GV911-E2004M	11/01/2004	\$ 14,740.00	30	\$ -	\$ 491.33
Hunter Table - Top Tire Changer	Equipment	1500 Treasurer	C438-00074	3/21/2017	\$ 8,703.14	7	\$ -	\$ 828.87
Z-Ride Mower & Tire Assembly Ferris	Equipment	1500 Treasurer	C430-00014	2/16/2018	\$ 10,070.48	7	\$ -	\$ 1,438.64
NEOPPOST MAIL MACHINE W/ FEEDER & CAB	Equipment	1500 Treasurer	C216-00009	10/22/2018	\$ 15,807.00	5	\$ -	\$ 790.35
Crawler Excavator	Equipment	1500 Treasurer	C303-00001	10/29/2020	\$ 90,347.18	10	\$ -	\$ 9,034.72
HPE DL380 G10 SERVER	Equipment	1500 Treasurer	C250-00119	3/17/2021	\$ 13,532.91	5	\$ -	\$ 2,706.58
Legistar Open Platform/ Meeting/Votecast	Equipment	1700 County Clerk	F251-00057	08/06/2018	\$ 49,000.00	5	\$ -	\$ 816.67
ST ViewScan 4-9 Microfiche Carrier	Equipment	1700 County Clerk	F217-00001	03/29/2019	\$ 5,524.37	5	\$ -	\$ 736.58
VXRAIL 14G Server w/ Add'l Hardware	Equipment	1700 County Clerk	F236-01146	8/15/2019	\$ 32,382.67	5	\$ -	\$ 6,476.53
VXRAIL 14G Server w/ Add'l Hardware	Equipment	1700 County Clerk	F236-01147	8/15/2019	\$ 32,382.67	5	\$ -	\$ 6,476.53
VXRAIL 14G Server w/ Add'l Hardware	Equipment	1700 County Clerk	F236-01148	8/15/2019	\$ 32,382.66	5	\$ -	\$ 6,476.53
Dell Networking S4128 Hardware Switch	Equipment	1700 County Clerk	F236-01144	8/15/2019	\$ 7,456.00	5	\$ -	\$ 1,491.20
Dell Networking S4	Equipment	1700 County Clerk	F236-01145	8/15/2019	\$ 7,456.00	5	\$ -	\$ 1,491.20
VXRAIL 14G Server w/Add'l Hardware	Equipment	1700 County Clerk	F236-01139	8/21/2019	\$ 32,383.50	5	\$ -	\$ 6,476.70
VXRAIL 14G Server w/Add'l Hardware	Equipment	1700 County Clerk	F236-01140	8/21/2019	\$ 32,383.50	5	\$ -	\$ 6,476.70
Windows Software (40)	Equipment	1700 County Clerk	F251-00060	9/24/2019	\$ 35,434.40	5	\$ -	\$ 7,086.88
SQL Server Standard Core	Equipment	1700 County Clerk	F251-00062	10/30/2019	\$ 7,072.00	5	\$ -	\$ 1,414.40
Canon Plotwave 365 w/ Scanner Express	Equipment	1700 County Clerk	F253-00025	11/30/2019	\$ 29,308.80	7	\$ -	\$ 4,186.97
RICOH 4055 COPIER	Equipment	1700 County Clerk	F213-00054	1/28/2020	\$ 7,626.60	5	\$ -	\$ 1,525.32
RICOH 4055 COPIER	Equipment	1700 County Clerk	F213-00055	1/28/2020	\$ 7,626.60	5	\$ -	\$ 1,525.32
RICOH 4055 COPIER	Equipment	1700 County Clerk	F213-00056	1/28/2020	\$ 7,626.60	5	\$ -	\$ 1,525.32
RICOH 4055 COPIER	Equipment	1700 County Clerk	F213-00057	1/28/2020	\$ 7,626.60	5	\$ -	\$ 1,525.32
RICOH 4055 COPIER	Equipment	1700 County Clerk	F213-00058	1/28/2020	\$ 7,626.60	5	\$ -	\$ 1,525.32
SAVIN IMC 3129 COPIER	Equipment	1700 County Clerk	F213-00059	1/28/2020	\$ 10,930.00	5	\$ -	\$ 2,186.00
Fargo DTC 4500E Badge Printer	Equipment	1700 County Clerk	F253-00023	08/09/2020	\$ 5,495.31	7	\$ -	\$ 785.04
Learning Management Software	Equipment	1700 County Clerk	F251-00072	12/15/2020	\$ 164,601.00	5	\$ -	\$ 32,920.20
Video Production Software	Equipment	1700 County Clerk	F251-00066	01/22/2021	\$ 298,189.00	5	\$ -	\$ 59,637.80
M365 E3 GCC Unified ShrdSvr License X50	Equipment	1700 County Clerk	F251-00068	02/18/2021	\$ 10,645.00	5	\$ -	\$ 2,129.00
M365 E3 GCC Unified ShrdSvr License X50	Equipment	1700 County Clerk	F251-00069	02/18/2021	\$ 18,245.00	5	\$ -	\$ 3,649.00
Dell Power Edge R640 Server	Equipment	1700 County Clerk	F236-01166	04/12/2021	\$ 8,939.51	5	\$ -	\$ 1,787.90
Dell EMC ME412 Storage Expansion Enclosu	Equipment	1700 County Clerk	F236-01162	04/16/2021	\$ 5,975.82	5	\$ -	\$ 1,195.16
Dell EMC ME4024 Storage Array	Equipment	1700 County Clerk	F236-01164	04/16/2021	\$ 13,944.93	5	\$ -	\$ 2,788.99
Dell Power Edge R640	Equipment	1700 County Clerk	F236-01163	05/04/2021	\$ 12,841.81	5	\$ -	\$ 2,568.36
Dell Power Protect 3300 Server	Equipment	1700 County Clerk	F236-01168	05/04/2021	\$ 15,232.28	5	\$ -	\$ 3,046.46
Dell Power Edge R640 W/ vCenter	Equipment	1700 County Clerk	F236-01165	05/04/2021	\$ 18,844.99	5	\$ -	\$ 3,769.00
Dell Power Switch S4112	Equipment	1700 County Clerk	F236-01167	05/04/2021	\$ 5,784.84	5	\$ -	\$ 1,156.97
Neopost IS-6000 Mail Machine	Equipment	1700 County Clerk	F216-00022	12/28/2021	\$ 19,406.00	5	\$ -	\$ 3,881.20
Robo20 UHD Wall Camers	Equipment	1700 County Clerk	F236-01169	09/02/2021	\$ 5,990.00	5	\$ -	\$ 1,198.00
Robo20 UHD Wall Camera	Equipment	1700 County Clerk	F236-01170	09/02/2021	\$ 5,990.00	5	\$ -	\$ 1,198.00
DSP- Server- cards, mic lines, encoder	Equipment	1700 County Clerk	F236-01175	6/27/2021	\$ 7,505.00	5	\$ -	\$ 1,501.00
Access points, boundary mics, charging	Equipment	1700 County Clerk	F236-01177	8/27/2021	\$ 8,952.00	5	\$ -	\$ 1,790.40



Oklahoma County, Oklahoma OMB 2 CFR 200 Cost Allocation Plan and Indirect Cost Rate Proposal for FY2026  
(Based on Expenditures for FY2024 )

Asset Name	Asset Class	Department	Asset No.	Acquisition Date	Acquisition Cost	Estimated Useful Life (Years)	Estimated Salvage Value	2024
FORTINET FORTIGATE 1200D SWITCH	Equipment	2700 MIS	DP236-04969	3/14/2019	\$ 26,731.27	5	\$ -	\$ 3,564.17
FORTINET FORTIGATE 1200d FIREWALL	Equipment	2700 MIS	DP236-04972	6/21/2019	\$ 31,100.00	5	\$ -	\$ 5,701.67
Fort-Gate 401E Network Security Appliance	Equipment	2700 MIS	DP236-05088	06/29/2020	\$ 18,882.00	5	\$ -	\$ 3,776.40
Forti-Gate 101F Network Security Appliance	Equipment	2700 MIS	DP236-05089	06/29/2020	\$ 10,539.00	5	\$ -	\$ 2,107.80
Cisco Business Edition 6000M	Equipment	2700 MIS	DP236-05100	11/5/2020	\$ 6,521.00	5	\$ -	\$ 1,304.20
Cisco Business Edition 6000M	Equipment	2700 MIS	DP236-05103	11/5/2020	\$ 6,521.00	5	\$ -	\$ 1,304.20
Veeam Backup Software LICENSE x 465	Equipment	2700 MIS	DP251-00102	05/18/2021	\$ 7,319.10	5	\$ -	\$ 1,463.82
MS365 Software License X 15	Equipment	2700 MIS	DP251-00106	05/20/2021	\$ 5,457.60	5	\$ -	\$ 1,091.52
JIRA Service Desk License	Equipment	2700 MIS	DP251-00084	12/13/2018	\$ 8,815.00	5	\$ -	\$ 734.58
Cisco Catalyst 9400 DNA Advantage X2	Equipment	2700 MIS	DP251-00093	9/25/2019	\$ 15,934.00	5	\$ -	\$ 3,186.80
Aruba Central Device License X181	Equipment	2700 MIS	DP251-00094	9/17/2019	\$ 17,919.00	5	\$ -	\$ 3,583.80
Aruba ClearPass License	Equipment	2700 MIS	DP251-00098	9/17/2019	\$ 14,850.00	5	\$ -	\$ 2,970.00
CATALYST 9400 SERIES SWITCH	Equipment	2700 MIS	DP236-04976	09/25/2019	\$ 10,168.00	5	\$ -	\$ 2,033.60
CATALYST 9400 SERIES SWITCH	Equipment	2700 MIS	DP236-04977	09/25/2019	\$ 10,168.00	5	\$ -	\$ 2,033.60
CISCO CATALYST 9400 SWITCH	Equipment	2700 MIS	DP236-04984	09/25/2019	\$ 8,680.00	5	\$ -	\$ 1,736.00
CISCO CATALYST 9400 SWITCH	Equipment	2700 MIS	DP236-04985	09/25/2019	\$ 8,680.00	5	\$ -	\$ 1,736.00
ExaGrid Tiered Backup Storage	Equipment	2700 MIS	DP236-05110	07/29/2021	\$ 74,900.00	5	\$ -	\$ 14,980.00
ExaGrid EX36-SEC-NAS Server	Equipment	2700 MIS	DP236-05111	07/29/2021	\$ 43,650.00	5	\$ -	\$ 8,730.00
Protect Workforce Identity X1,400	Equipment	2700 MIS	DP251-00115	06/30/2021	\$ 50,400.00	5	\$ -	\$ 10,080.00
Event Sentry AD Monitor	Equipment	2700 MIS	DP251-00121	07/07/2021	\$ 10,972.00	5	\$ -	\$ 2,194.40
Delinea Secret Server X30	Equipment	2700 MIS	DP251-00129	06/16/2022	\$ 36,375.90	5	\$ -	\$ 7,275.18
Pentra Core License- 1 yr (3)	Equipment	2700 MIS	DP251-00131	7/8/2022	\$ 166,666.68	5	\$ -	\$ 33,333.34
VEEAM BU for MS Office 365 X1,435	Equipment	2700 MIS	DP251-00133	7/22/2022	\$ 22,586.90	5	\$ -	\$ 4,517.38
MS Windows Server Datacenter License (8)	Equipment	2700 MIS	DP251-00132	8/3/2022	\$ 50,929.92	5	\$ -	\$ 10,185.98
Presidio HPE DL325 Server	Equipment	2700 MIS	DP236-05124	9/6/2022	\$ 17,414.00	5	\$ -	\$ 3,482.80
HPE DL325 Server	Equipment	2700 MIS	DP236-05125	9/6/2022	\$ 17,414.00	5	\$ -	\$ 3,482.80
HPE DL325 Server	Equipment	2700 MIS	DP236-05126	9/6/2022	\$ 17,414.00	5	\$ -	\$ 3,482.80
HPE SN2410M Switch	Equipment	2700 MIS	DP236-05128	9/6/2022	\$ 7,710.00	5	\$ -	\$ 1,542.00
HPE SN2410M Switch	Equipment	2700 MIS	DP236-05129	9/6/2022	\$ 7,710.00	5	\$ -	\$ 1,542.00
HPE NS HF40 Nimble Storage Unit	Equipment	2700 MIS	DP236-05130	9/6/2022	\$ 83,487.00	5	\$ -	\$ 16,697.40
HPE DL 325 Gen10 CTO Server	Equipment	2700 MIS	DP236-05127	10/7/2022	\$ 17,414.00	5	\$ -	\$ 3,482.80
M365 E3 GCC Unified License X 505	Equipment	2700 MIS	DP251-00140	10/19/2022	\$ 190,642.55	5	\$ -	\$ 38,128.51
ExchgnOnlnP2GCC ShrdSvr	Equipment	2700 MIS	DP251-00141	10/19/2022	\$ 74,630.00	5	\$ -	\$ 14,926.00
IBM Qrader Core Appliance	Equipment	2700 MIS	DP236-05143	11/22/2022	\$ 42,999.66	5	\$ -	\$ 8,599.93
IBM Qrader Core Appliance	Equipment	2700 MIS	DP236-05144	11/22/2022	\$ 19,389.24	5	\$ -	\$ 3,877.85
IBM Qrader Network Insights Appliance	Equipment	2700 MIS	DP236-05145	11/22/2022	\$ 42,999.66	5	\$ -	\$ 8,599.93
IBM Qrader Software Install License	Equipment	2700 MIS	DP251-00137	11/22/2022	\$ 5,519.88	5	\$ -	\$ 1,103.98
IBM Qrader Event Capacity Software	Equipment	2700 MIS	DP251-00138	11/22/2022	\$ 64,459.36	5	\$ -	\$ 12,891.87
IBM Qrader Flows Capacity Software	Equipment	2700 MIS	DP251-00139	11/22/2022	\$ 26,221.80	5	\$ -	\$ 5,244.36
HPE SN2410M Switch w/ Accessories	Equipment	2700 MIS	DP236-05150	2/16/2023	\$ 13,827.07	5	\$ -	\$ 2,765.41
HPE SN2410M Switch w/ Accessories	Equipment	2700 MIS	DP236-05151	2/16/2023	\$ 13,827.07	5	\$ -	\$ 2,765.41
HPE NS DHCI HF40 w/ Accessories	Equipment	2700 MIS	DP236-05152	2/16/2023	\$ 19,506.73	5	\$ -	\$ 3,901.35
Quantum Scalar 13 LTO-9 DRV	Equipment	2700 MIS	DP236-05154	4/18/2023	\$ 9,419.09	5	\$ -	\$ 1,883.82
Zendesk Suite Growth License X20	Equipment	2700 MIS	DP251-00145	5/2/2023	\$ 18,731.20	5	\$ -	\$ 3,746.24
Fortinet Fortigate 600F Network Security	Equipment	2700 MIS	DP236-05167	08/30/2023	\$ 22,085.00	5	\$ -	\$ 4,048.92

Oklahoma County, Oklahoma OMB 2 CFR 200 Cost Allocation Plan and Indirect Cost Rate Proposal for FY2026  
(Based on Expenditures for FY2024 )

Asset Name	Asset Class	Department	Asset No.	Acquisition Date	Acquisition Cost	Estimated Useful Life (Years)	Estimated Salvage Value	2024
Fortine Fortigate 600F Network Security	Equipment	2700 MIS	DP236-05168	08/30/2023	\$ 22,085.00	5	\$ -	\$ 4,048.92
WAN Load Balance	Equipment	2700 MIS	DP236-05177	01/02/2024	\$ 7,185.82	5	\$ -	\$ 718.58
WAN Load Balance	Equipment	2700 MIS	DP236-05178	01/02/2024	\$ 7,185.82	5	\$ -	\$ 718.58
MARQUEE FIXED SEATING- BOCC MEETING ROOM	Furniture	1700 County Clerk	F118-00001	03/14/2016	\$ 16,951.00	10	\$ -	\$ 1,695.10
2021 Dodge Ram 1500 4x4 Crew Cab	Vehicle	1500 Treasurer	C301-00313	9/23/2021	\$ 27,834.00	7	\$ -	\$ 3,976.29
<b>Total:</b>					<b>\$ 2,596,102.09</b>			<b>\$ 486,690.56</b>

**Oklahoma County**  
**Schedule of Expenditures of Federal Awards**  
**For the Fiscal Year Ended June 30, 2024**

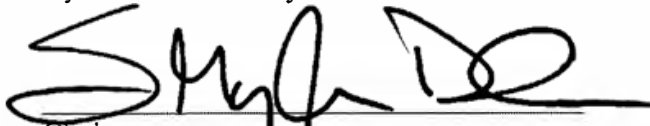
Federal Department	State Pass-Thru Department/Program Award Title	ARRA Funds	Federal CFDA Number	Pass-Thru Grantor's Number	Beginning Cash Balance	Federal Receipts	Federal Expenditures	Ending Cash Balance	Expenditures to Subrecipients
Dept of Agriculture	Department of Education/National School Breakfast Program	No	10.553	26500	-	59,598.63	59,598.63	-	
Dept of Agriculture	Department of Education/National School Lunch Program	No	10.555	26500	-	94,751.70	94,751.70	-	
Dept of Agriculture	Department of Education/Commodities (Non-cash awards)	No	10.555	26500	12,030.39	-	12,030.39	-	
DOI	Payments in Lieu of Taxes	No	15.226		\$ -	\$ 18,113.00	18,113.00	-	-
State of OK Emergency Mgmt	Triple X Rd Project (HMA FEMA DR 4299 PW 4299050) Reimbursement	No	FEMA-4299-050-DR-OK		\$ (160,273.40)	\$ 1,466,311.99	337,870.33	968,168.26	-
FEMA	State of Oklahoma (FEMA)	No			-	28,488.93	28,488.93	-	-
USDOJ-BJA	Bureau of Justice Assistance	No	16.034	2020-VD-BX-0202	(11,250.00)	-	-	The funding is complete and grant is closed out	-
USDOJ-BJA	Oklahoma District Attorneys Council	No	16.554	19P007 MU-BX-K 2019	8,934.50	-	-	The funding is complete and grant is closed out	-
Dept of Justice	Equitable Sharing Program	No	16.922	N/A	126,733.28	136,325.43	23,732.56	239,326.15	-
NHTSA	Oklahoma Highway Safety Office	No	20.600	PT-22-03-20-15	\$ (31.86)	\$ -	-	(31.86)	-
NHTSA	Oklahoma Highway Safety Office	No	20.600	PT-23-03-25-16	\$ (79,465.80)	\$ 142,527.24	63,061.44	-	-
NHTSA	Oklahoma Highway Safety Office	No	20.600	PT-24-03-30-17	\$ -	89,167.27	254,604.19	(165,436.92)	-
USDOJ - OJP	Oklahoma City/Justice Assistance Grant	No	16.738	2020-DJ-BX-0906	\$ -	112,737.72	112,737.72	-	-
USDOJ - OJP	Oklahoma City/Justice Assistance Grant	No	16.738	15PBIAA-21-GG-01750-JAGX	\$ -	78,881.28	78,881.28	-	-
FEMA	Oklahoma Office of Homeland Security	No	97.067	1355.034	\$ -	-	24,254.36	(24,254.36)	-
FEMA	Oklahoma Office of Homeland Security	No	97.067	1330.070	\$ -	-	17,052.00	(17,052.00)	-
FEMA	Oklahoma Office of Homeland Security	No	97.067	1330.050	\$ -	7,070.00	7,070.00	-	-
Department of the Treasury	The Coronavirus Aid, Relief, and Economic Security Act (CARES Act)	No	21.019		(\$57,329.90)	-	-	Fund 1400 for Cares Funding is closed out in FY22-23	-
Department of the Treasury	Coronavirus State and Local Fiscal Recovery Funds (SLFRF)	No	21.027		\$ 124,331,260.89	\$ -	37,557,783.31	86,773,477.58	5,738,501.35
Department of the Treasury	Local Assistance and Tribal Consistency Fund (LATCF)	No	21.032		\$ 50,000.00	\$ 50,000.00	-	100,000.00	-
FEMA	Oklahoma Office of Homeland Security	No	97.036		\$ (519,590.90)	\$519,590.90	-	-	-
FEMA	Oklahoma Department of Emergency Management	No	97.039	FEMA-4299-049-DR-OK	\$ (675,071.22)	\$0.00	-	Project is not officially closed out by the State, but we have expended all funds and the County has been reimbursed	-
FEMA	Oklahoma Department of Emergency Management (Wilshire Blvd. BRIC Project)	No	97.047	2021-BR-071-0002	\$ (19,977.25)	\$0.00	128,823.13	(148,800.38)	-
FEMA	Oklahoma Department of Emergency Management (Triple X Rd. Project)	No	97.039	4299-0050-OK	19,539.66	1,466,311.99	253,402.75	1,232,448.90	-
FEMA	Oklahoma Department of Emergency Management	No	97.042		\$ 66,174.50	\$90,000.00	12,611.51	143,562.99	-
<b>TOTALS</b>					<b>123,079,652.50</b>	<b>4,187,412.75</b>	<b>38,900,373.51</b>	<b>89,101,408.36</b>	<b>5,738,501.35</b>


**A) was reviewed and approved by the following Elected Officials**

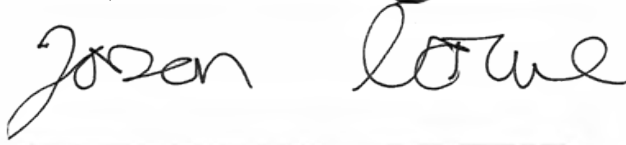
SIGNATURE	NAME (PRINT)	TITLE	DATE

Approved on 25, day of June, 2025


By Board of County Commissioners

  
Chairman

  
Vice-Chairman

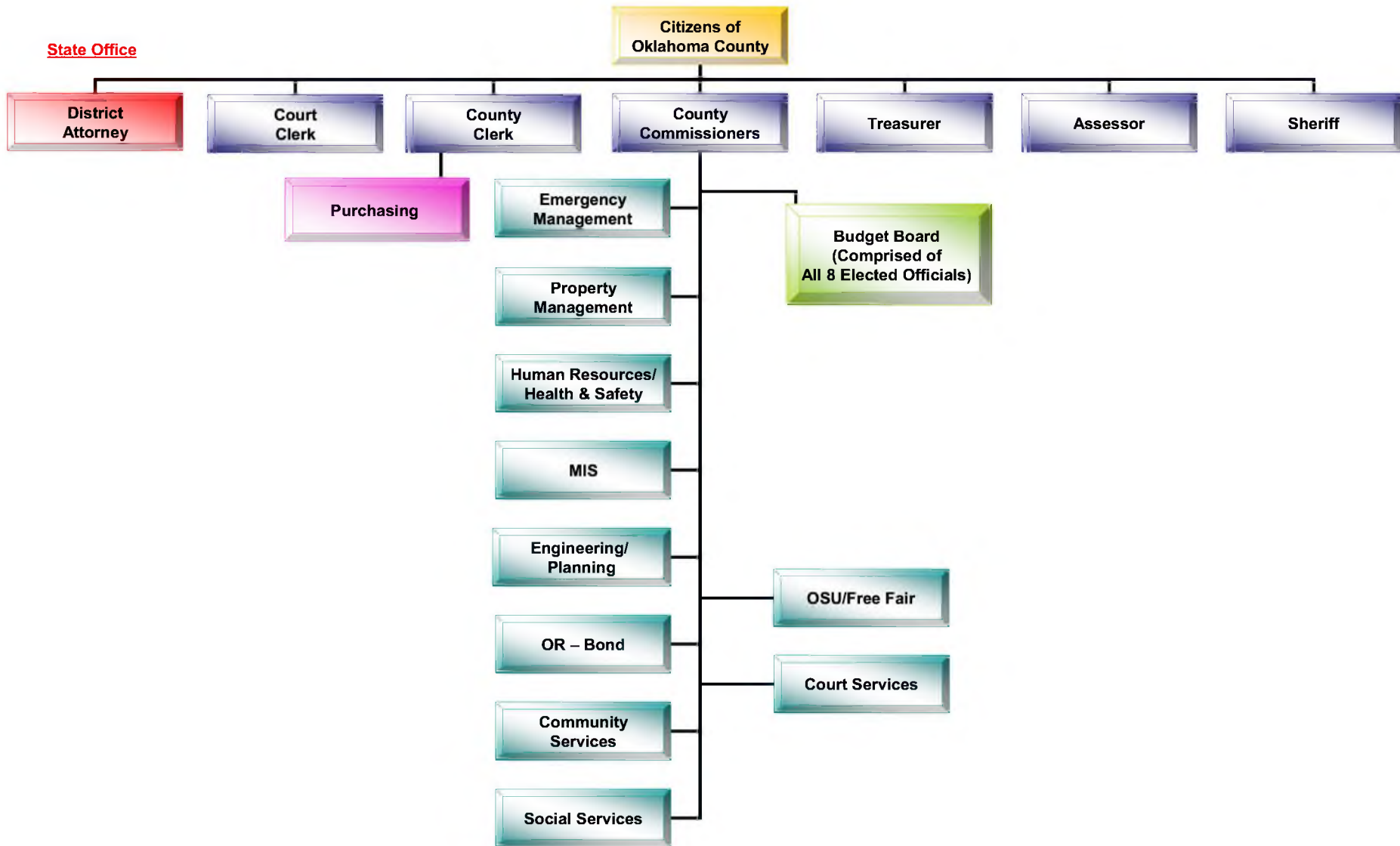
  
Member

ATTEST:

  
Maressa Treat, County Clerk,  
Oklahoma County



# OKLAHOMA COUNTY ORGANIZATIONAL CHART



## **Oklahoma County Central Service Department Descriptions**

### **General Government**

General Government Department is used to record county - wide charges that are not easily allocated and is operated by the Board of County Commissioners.

### **County Commissioners**

The Board of County Commissioners is the chief administrative body for the County. County Commissioners are also responsible for general supervision over all fiscal affairs of the County.

The Commissioners must act as a Board when entering into contracts or other agreements affecting the County's welfare. Thus, actions taken by the board are voted on and approved by a majority of the Commissioners. The Board of County Commissioners, created by the State Constitution, is composed of three Commissioners elected by the people. The County is divided into three districts, as equal in population as possible and numbered 1, 2, and 3 respectively. One Commissioner is elected from each district. District boundaries are set once every 10 years following the federal census.

As the County's chief administrative body, the three County Commissioners must make major financial decisions and transactions. The Board has the official duty to ensure the fiscal responsibility of the other County Officers who handle County funds. The review and approval procedures empowered to the Board of County Commissioners are a means to provide the public with a fiscally efficient system of County government.

Duties of the County Commissioners:

- Supervise and manage all real estate owned by the County. The Board maintains the Courthouse, County Office Building, Investors Capital Building, County Jail, Human Services Center, Juvenile Center, Extension Center, a parking garage, and three highway maintenance offices.
- Advertise for bids on major County purchases and award all contracts.
- Approve all claims covering materials, supplies, or services purchased by all County offices and paid for by County funds.
- Call all County bond elections.
- Designate, construct, maintain, and repair all County highways and bridges.
- Through the Department of Training and General Assistance, provide pharmacy services and prescription medicines, emergency food vouchers, indigent burials, ambulance service, medical services, temporary housing and convalescent care, and job training for the indigent, destitute, and unemployable County residents. It also helps coordinate the federal Food Stamp program.

- Pass on all zoning applications and regulations of the County Planning Commission. (One member of the Board serves on the Planning Commission.)
- Conduct proceedings, set date of election, canvass returns, and issue Order of Incorporation of all towns and/or cities in the County.
- Audit the accounts of all County offices.
- Publish in a County newspaper a complete report of the official proceedings of all meetings of the Board.
- Appoint one member of the County Excise Board and Board of Equalization.

### **Treasurer**

The County Treasurer is an elected constitutional officer with a four-year term whose primary function is to collect taxes certified by the County Assessor from the assessment valuations placed on real estate, personal property, and public utilities in the County.

After collection, the Treasurer disburses the moneys to the county, cities, towns and schools according to budgets approved by the County Budget Board. The County Treasurer is the official custodian of all funds for the County and Treasurer for schools and vo-tech institutions that do not have their own treasurer.

All warrants and vouchers for all County departments are registered and maintained through the Treasurer's office.

The Treasurer's office also manages of County-owned property acquired at annual sales of real estate for delinquent taxes. The Treasurer also may sell these pieces of property, upon approval of the Board of County Commissioners

All revenues received by County Government from ad valorem taxes and other sources are deposited with the County Treasurer. The County Treasurer collects ad valorem taxes for the county and its political subdivisions. The County Treasurer is authorized to issue delinquent personal property tax warrants and to impose tax liens on real property for delinquent taxes.

### **County Clerk**

The Oklahoma State Statutes set out the duties and the responsibilities of the County Clerk.

### **County Audit**

County Audit is used to record expenditures for various auditing services performed for the county.

## **Purchasing**

The County Purchasing Department is responsible for analyzing all bids taken by the County for supplies, materials, and equipment. The Department strives to ensure that all purchases made by the County are the best buy for the taxpayers' dollars.

## **Centralized BOCC HR/Health and Safety**

The Office of Environmental Health & Safety, established by the Board of County Commissioners, have the following goals and objectives.

1. To protect the health & safety of County employees.
2. To comply with regulatory agencies.
3. To protect the County assets against any significant losses.

These objectives are achieved through evaluation, recognition, and control of physical, chemical, biological, explosive, and other hazards.

The department administers the County's workers' compensation program and coordinates payments of claims, and also serves as the County's American's with Disabilities Act Coordinator.

## **Employee Benefits Department**

The employee benefits department provides the administration of all active employee and retiree benefit programs. This department handles the administration of the Oklahoma County health benefits plan, prescription plan, dental plan, vision plan, wellness initiatives, annual health risk assessment testing, COBRA administration, retiree benefits, retirement process, maintain all benefit deductions, retiree billing and premium collections, retirement administration, new employee benefits administration, annual enrollment meetings, reporting to various boards, health plan reporting, actuarial reporting, voluntary benefit offerings, and benefit contracting, negotiations and renewals.

## **Information and Technology**

The Management Information Services Department (M.I.S.) is the County's central technology provider. This department provides the computer and business information system support required by County departments. These services include network services, system support, application development and maintenance, and PC support.

## **Facilities Management – Courthouse/Office Buildings**

Facilities Management keeps County Buildings in proper and safe working condition and ensures all county facilities are up-to-date in appearance, efficiency, and functionality. This department maintains the heating and air conditioning, lighting, plumbing, electrical, and lawn sprinkler



systems; paints offices, deals with furniture needs, repairs doors, installs and repairs locks, unlocks locks that do not have keys, supervises all janitorial services by internal and external providers, and, in general, performs all required maintenance within the capabilities of the Department.

### **Planning Commission**

The planning commission provides professional planning support to the County Commissioners, Planning Commission and the general public for the development and implementation of State statutes and county policies and other land use plans.

### **County Clerk's Records Management and Preservation**

The County Clerk's Records Management and Preservation account is used to record all expenses for record management and archiving services for the entire county.

### **Planning Commission Fee Fund**

The planning commission fee fund is used to account for the fees associated with implementing development for the county.

### **Employee Benefits**

Employee Benefits is used to record the cost of the employee benefit plans and employee insurance plans that have been adopted by the Board of County Commissioners. The county is self-insured for medical and dental claims.

### **Workers Compensation Insurance**

Workers Compensation Insurance is used to record the cost of Workers compensation administration and claims. The county is self-insured for worker's compensation.

### **Self-Insurance**

Self-Insurance is used to record the cost of total claims against the county as approved by the Board of County Commissioners.