

RESOLUTION NO. 2025-3314

A RESOLUTION ACCEPTING THE REPLAT OF LOT 4 OF PATNAUDE HILL, PURSUANT TO O.S. TITLE 19, §868.8.

WHEREAS, the Oklahoma County Planning Commission did on July 17, 2025, in an open meeting approved the **replat** (RE-2025-02) of Patnaude Hill Lot 4 an addition to Oklahoma County, Oklahoma;

Lot Four (4) Patnaude Hill, Oklahoma County, Oklahoma, according to the recorded plat thereof.

Location: N. Dobbs Rd. & Wilshire Blvd. (County Highway District #2)

And

WHEREAS, the Planning Commission recommends approval by the Board of County Commissioners;

NOW, THEREFORE, BE IT RESOLVED that the Board of County Commissioners hereby accepts this **replat** of Patnaude Hill, Lot 4 and authorizes the replat to be placed on record.

APPROVED this _____ day of _____, 2025

BOARD OF COUNTY COMMISSIONERS
OKLAHOMA COUNTY, OKLAHOMA

APPROVED:

Stacey Trumbo, P.E.
County Engineer

_____, Chairman

_____, Member

_____, Member

ATTEST:

Maressa Treat
County Clerk

APPROVED as to form and legality this _____ day of _____, 2025

Assistant District Attorney

RESOLUTION NO. 2025-3314

A RESOLUTION ACCEPTING THE REPLAT OF LOT 4 OF PATNAUDE HILL, PURSUANT TO O.S. TITLE 19, §868.8.

WHEREAS, the Oklahoma County Planning Commission did on July 17, 2025, in an open meeting approved the **replat** (RE-2025-02) of Patnaude Hill Lot 4 an addition to Oklahoma County, Oklahoma;

Lot Four (4) Patnaude Hill, Oklahoma County, Oklahoma, according to the recorded plat thereof.

Location: N. Dobbs Rd. & Wilshire Blvd. (County Highway District #2)

And

WHEREAS, the Planning Commission recommends approval by the Board of County Commissioners;

NOW, THEREFORE, BE IT RESOLVED that the Board of County Commissioners hereby accepts this **replat** of Patnaude Hill, Lot 4 and authorizes the replat to be placed on record.

APPROVED this _____ day of _____, 2025

BOARD OF COUNTY COMMISSIONERS
OKLAHOMA COUNTY, OKLAHOMA

APPROVED:

Stacey Trumbo, P.E.
County Engineer

_____, Chairman

_____, Member

_____, Member

ATTEST:

Maressa Treat
County Clerk

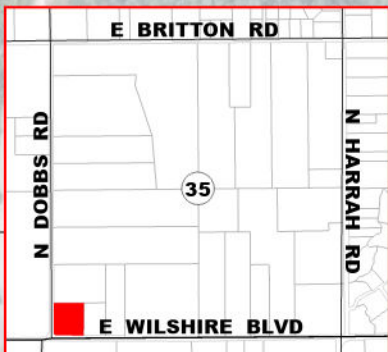
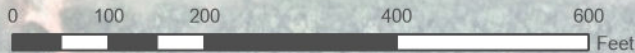
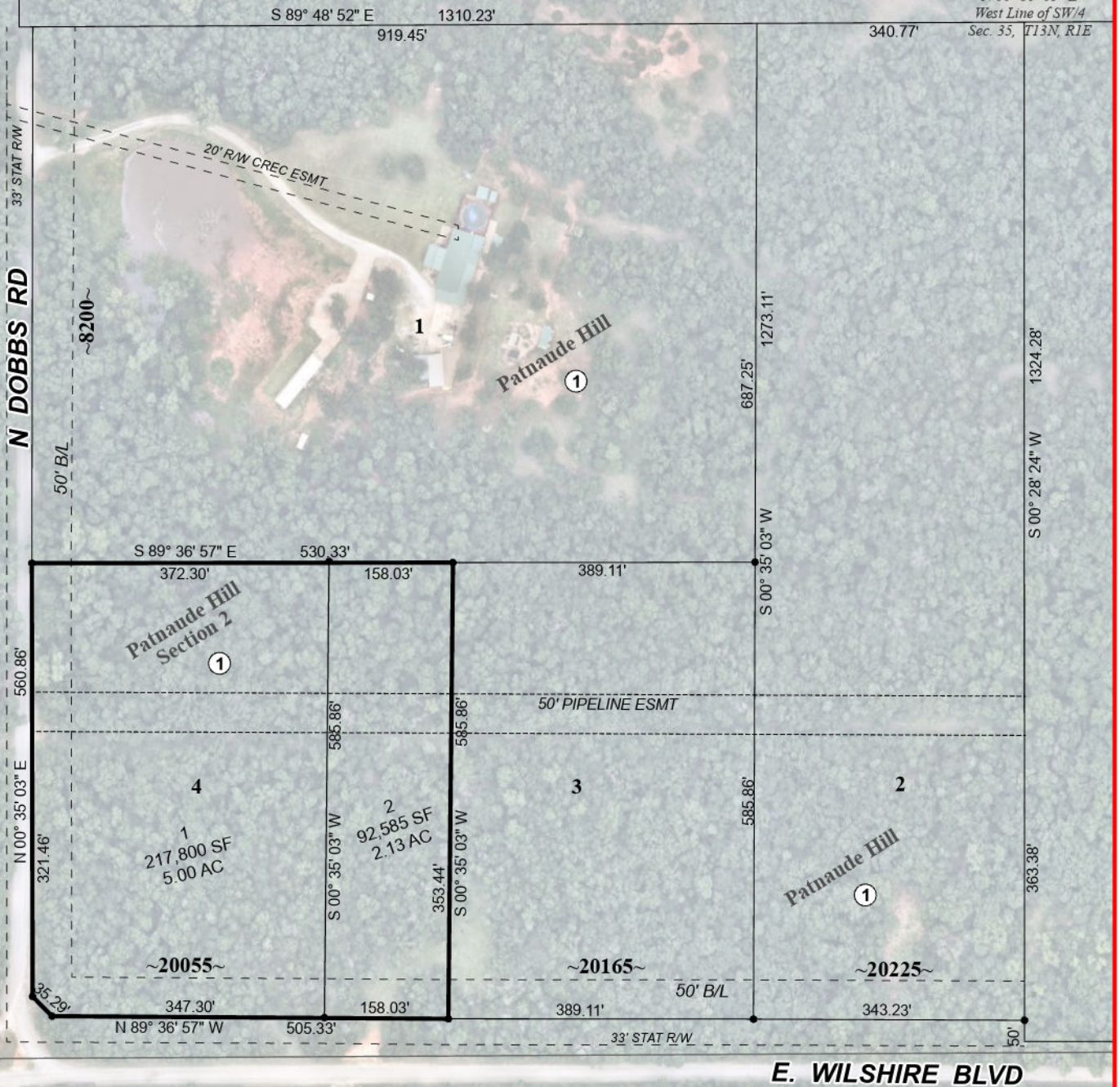
APPROVED as to form and legality this 21 day of August, 2025



Assistant District Attorney

OKLAHOMA COUNTY PLANNING COMMISSION
 RE-PLAT (RE-2025-02)
 PATNAUD HILL, SECTION 2
 LOT 4, BLOCK 1
 LOCATION: DOBBS & WILSHIRE BLVD

Basis of Bearing
 N 00° 35' 03" E
 West Line of SW/4
 Sec. 35, T13N, R1E



OKLAHOMA COUNTY
 ENGINEERING & PLANNING

320 Robert S. Kerr, Suite 201
 Oklahoma City, OK 73102-3431
 County Engineer : Stacey Trumbo, P.E.

Date: MAY 2025	Scale: 1" = 200'	Drawn By: SCM
-------------------	---------------------	------------------

SECTION 35, T-13-N, R-1-E, I.M.
 LOCATION MAP