

Oklahoma County Detention and Behavioral Health Facility

Citizens Bond Oversight Advisory Board
Presentation - July 23, - 2024



Continue Design Work Sessions

Meetings this week with county staff, construction and design teams:

7/24

- Security and IT Systems - Jail
- Security and IT Systems - Behavioral Care Center

7/25

- HVAC – Detention and BCC
- Electrical Systems – Detention and BCC
- Plumbing Systems – Detention and BCC
- Sustainability Update

Upcoming Schedule

Cell Construction tours of precast cells

- July, Montgomery, Alabama
- August – Belton, Texas

Milestone Schedule / Dates

- BCC Design Development Complete – **August 23, 2024**
- ARPA Package - GMP Finalized – **December 2024**
- Site and Foundation Construction – **Begins January 2025**
- BCC Building Construction – **Through 2026**
- Jail Construction – **June 2025 through August 2027**

Facility/Staff/Inmate Counts

Current Pretrial/Sentenced Inmates

For: 02/10/2024 10:08 AM

Pretrial Inmates:	1062
Sentenced Inmates:	169
Total Inmates	1231

Initial Jurisdiction Code Inmate Count By Classification Level

Classification	Count	Percentage
Minimum	241	16.24
Medium	564	38.01
Maximum	679	45.75
	1484	100.00

Current Pretrial/Sentenced Inmates

For: 07/22/2024 12:33 PM

Pretrial Inmates:	1228
Sentenced Inmates:	276
Total Inmates	1504

Almost 85% of inmates are Maximum and Medium Security Inmates

Inmate counts jumped almost 300 beds during the last 5 months.

An 1800 bed facility will likely be at capacity today.

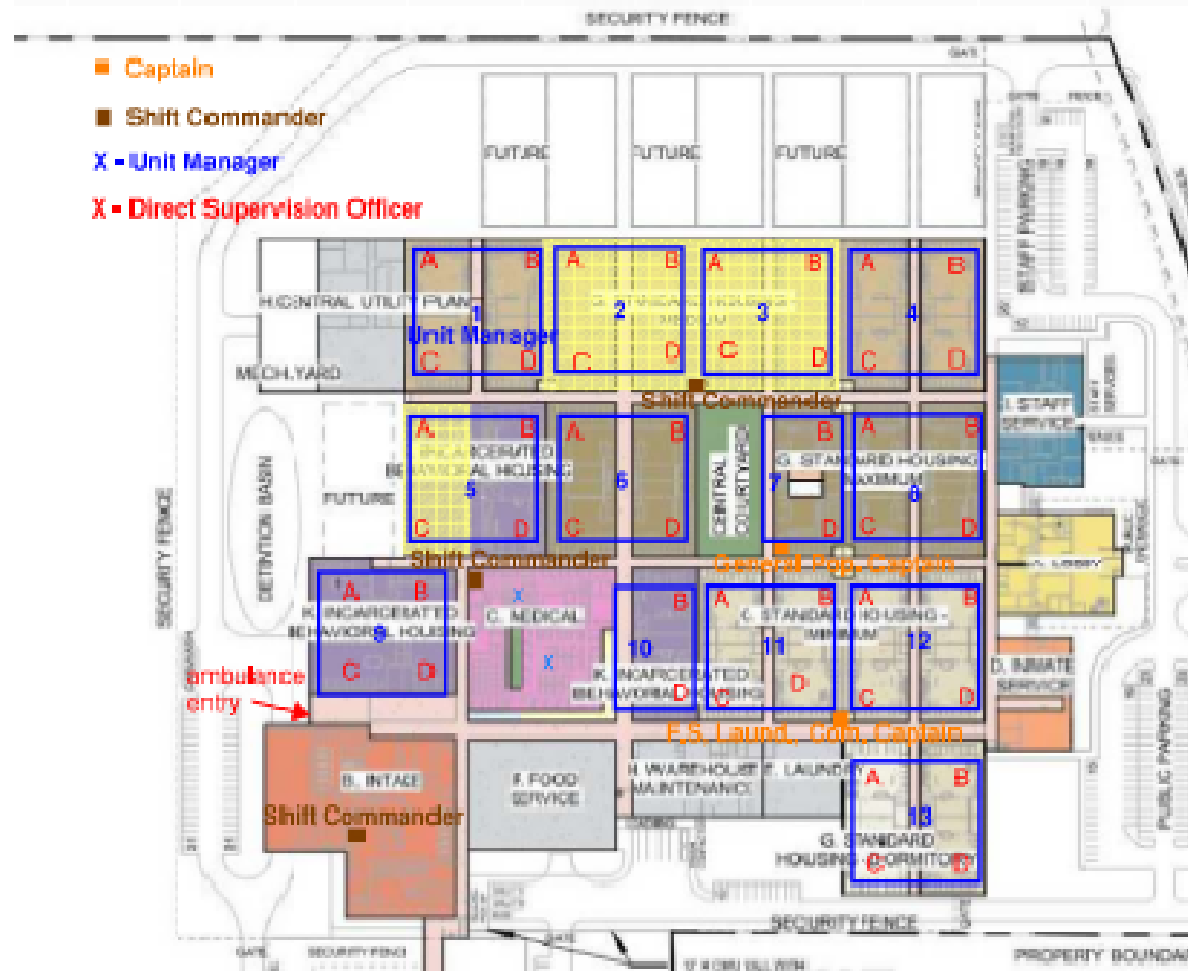
Oklahoma County Jail

Inmate Breakdown	March 28 2024		Additional 15% for Operating safely	Growth per year for 30 years	Accounting for Department of Corrections HOLDS to previous levels
	#				
Breakout by Classification					
Minimum	214	17%	246	320	
Medium	432	34%	497	646	
Maximum	579	48%	666	866	
DOC Holds Increase*					250
Current Total Beds	1254		1409	1831	2081

Inmate count today is 1,504 inmates

The DOC Holds has averaged between 200 and 300 inmates over the past 10 years.

Staffing Diagram



For Staffing Analysis,
we are looking at
1800 Bed and 2400
Bed options

Thank You

BEHAVIORAL CARE CENTER

