

RESOLUTION NO. 2025-0789

A RESOLUTION ACCEPTING THE REPLAT OF POINTON’S OAKWOOD STATION, LOT 3 AND LOT 4 AN ADDITION TO OKLAHOMA COUNTY, OKLAHOMA, FOR THE PURPOSE OF RELOCATING A SHARED DRIVEWAY AS PROVIDED IN O.S. TITLE 19, §868.8.

WHEREAS, the Oklahoma County Planning Commission did on February 20, 2025 in an open meeting approved the **replat** of Pointon’s Oakwood Station Lot 3 and Lot 4 an addition to Oklahoma County, Oklahoma;

Lots Three (3) and Four (4), Pointon’s Oakwood Station, Oklahoma County, Oklahoma according to the recorded plat thereof.

Location: 13798 & 13840 SE 29th St (County Highway District #2)

And

WHEREAS, the Planning Commission recommends approval by the Board of County Commissioners;

NOW, THEREFORE, BE IT RESOLVED that the Board of County Commissioners hereby accepts this **replat** of Pointon’s Oakwood Station, Lot 3 and Lot 4 and authorizes the replat to be placed on record.

APPROVED this _____ day of _____, 2025

BOARD OF COUNTY COMMISSIONERS
OKLAHOMA COUNTY, OKLAHOMA

APPROVED:

_____, Chairman

Stacey Trumbo, P.E
County Engineer

_____, Member

_____, Member

ATTEST:

Maressa Treat
County Clerk

APPROVED as to form and legality this _____ day of _____, 2025

Assistant District Attorney

RESOLUTION NO. 2025-0789

A RESOLUTION ACCEPTING THE REPLAT OF POINTON'S OAKWOOD STATION, LOT 3 AND LOT 4 AN ADDITION TO OKLAHOMA COUNTY, OKLAHOMA, FOR THE PURPOSE OF RELOCATING A SHARED DRIVEWAY AS PROVIDED IN O.S. TITLE 19, §868.8.

WHEREAS, the Oklahoma County Planning Commission did on February 20, 2025 in an open meeting approved the replat of Pointon's Oakwood Station Lot 3 and Lot 4 an addition to Oklahoma County, Oklahoma;

Lots Three (3) and Four (4), Pointon's Oakwood Station, Oklahoma County, Oklahoma according to the recorded plat thereof.

Location: 13798 & 13840 SE 29th St (County Highway District #2)

And

WHEREAS, the Planning Commission recommends approval by the Board of County Commissioners;

NOW, THEREFORE, BE IT RESOLVED that the Board of County Commissioners hereby accepts this replat of Pointon's Oakwood Station, Lot 3 and Lot 4 and authorizes the replat to be placed on record.

APPROVED this _____ day of _____, 2025

BOARD OF COUNTY COMMISSIONERS
OKLAHOMA COUNTY, OKLAHOMA

APPROVED:

Stacey Trumbo, P.E.
County Engineer

_____, Chairman

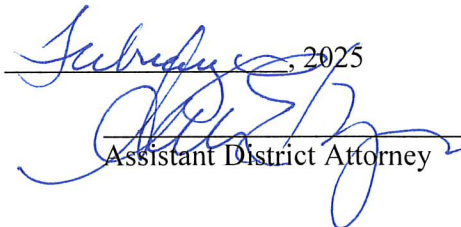
_____, Member

_____, Member

ATTEST:

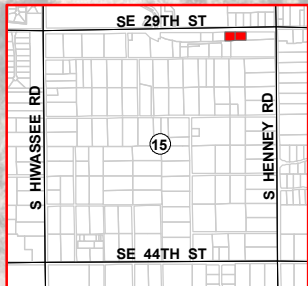
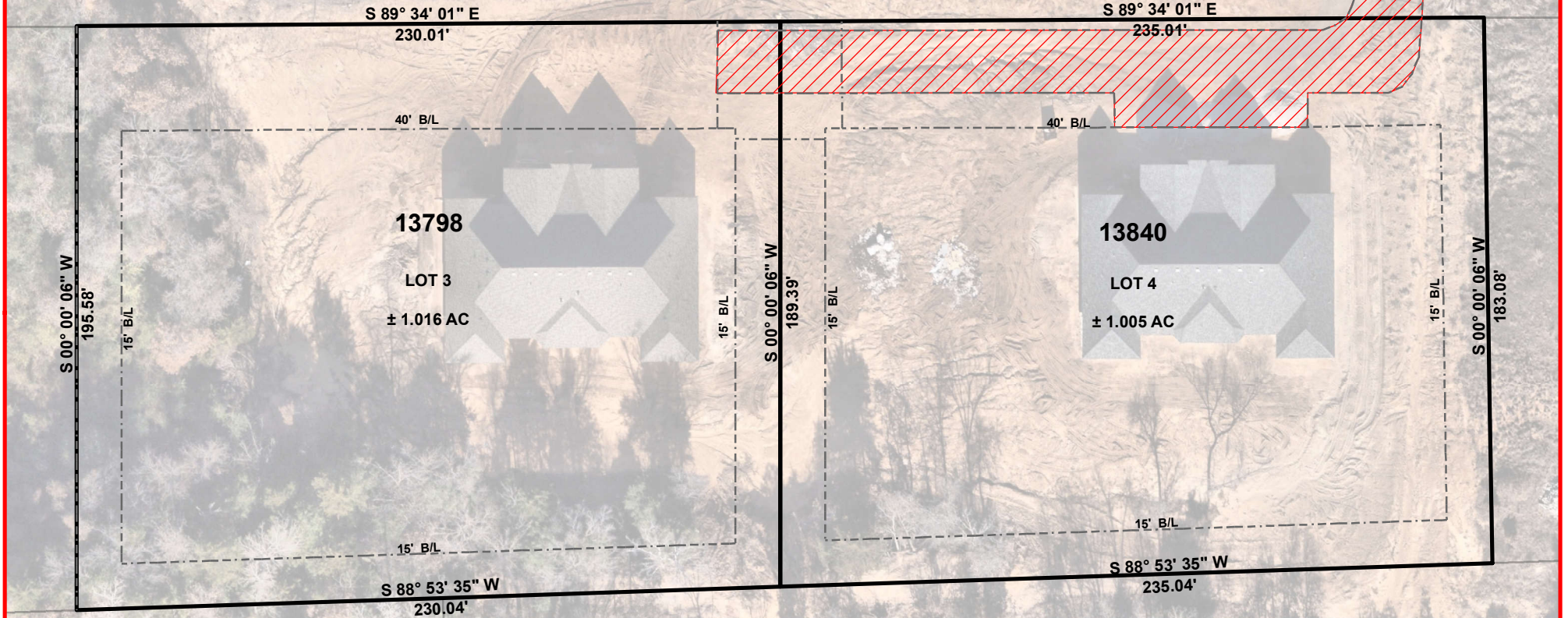
Maressa Treat
County Clerk

APPROVED as to form and legality this 26 day of February, 2025


Assistant District Attorney

OKLAHOMA COUNTY PLANNING COMMISSION
 RE-PLAT (RE-2025-01)
 LOTS 3 & 4 OF POINTON'S OAKWOOD STATION
 LOCATION: 13798 & 13840 SE 29TH
 INFO: RELOCATION PLATTED
 DRIVEWAY LOCATION

S.E. 29TH ST



SECTION 15, T-11-N, R-1-E, 1.M
 LOCATION MAP



**OKLAHOMA COUNTY
 ENGINEERING & PLANNING**

320 Robert S. Kerr, Suite 201
 Oklahoma City, Ok 73102-3431
 County Engineer : Stacey Trumbo, P. E.

Date:
 JAN 2025

Scale: 1:600
 1" = 50'

Drawn By:
 SCM