

RESOLUTION NO. 2025-4832

**A RESOLUTION ACCEPTING THE FINAL PLAT OF ORCHARD HILLS – PHASE I,
PURSUANT TO O.S. TITLE 19 §868.8.
(A Single-Family Residential Subdivision)**

WHEREAS, the Oklahoma County Planning Commission, on December 18, 2025, approved the Final Plat of Orchard Hills – Phase I (FP-2025-13), a single-family residential subdivision containing 33 lots on 69 acres, more particularly described as follows:

A tract of land situated within the Northeast Quarter (NE/4) of Section Nine (9), Township Fourteen North (T14N), Range Four West (R4W), of the Indian Meridian (I.M.), Oklahoma County, Oklahoma, more particularly described by metes and bounds as follows:
BEGINNING at the Northeast corner of said NE/4; thence
S00°06'19"E along the East line of said NE/4 a distance of 1983.26 feet; thence
S89°11'27"W a distance of 663.58 feet; thence
S00°06'01"E a distance of 661.71 feet to a point on the South line of said NE/4; thence
S89°08'15"W along said South line a distance of 1275.00 feet; thence
N00°51'45"W a distance of 465.00 feet; thence
N42°55'06"E a distance of 595.00 feet; thence
N26°38'38"E a distance of 1255 feet; thence
N58°59'57"E a distance of 475.00 feet; thence
N00°38'47"W a distance of 400.00 feet; thence
N89°21'08"E a distance of 570.00 feet to the POINT OF BEGINNING. Said tract contains 3,021,032 Sq Ft or 69.35 Acres, more or less.

Location: NW 234th St. & MacArthur Blvd. (County Highway District #3)

And
WHEREAS, an irrevocable letter of credit (No. 829), executed on January 7, 2025, in the amount of \$87,940.00, was posted by First Bank and Trust Company to guarantee erosion control for a period of one (1) year after final approval of the subdivision.

And
WHEREAS, a maintenance bond (Bond No. 54265013) was posted as surety, executed December 20, 2024, in the amount of \$618,764.25 by First Water Contracting LLC to assure completion of paving improvements. This bond shall remain in effect for two (2) years following the final approval of the subdivision, provided that a construction entrance is used during the home construction process. If a construction entrance is not utilized, the bond will be extended for a period of ten (10) years.

And
NOW, THEREFORE, BE IT RESOLVED that the Board of County Commissioners hereby approves the Erosion Control and Paving Improvements Bond and authorizes the Final Plat of Orchard Hills – Phase I to be recorded.

The roads will be maintained by the County _____

The roads will not be maintained by the County. X

APPROVED: **BOARD OF COUNTY COMMISSIONERS
OKLAHOMA COUNTY, OKLAHOMA**

Stacey Trumbo, P.E.,
County Engineer

Chairman

ATTEST:

Member

Maressa Treat
County Clerk

Member

APPROVED as to form and legality this _____ day of _____, 2025.

Assistant District Attorney

RESOLUTION NO. 2025-4832

**A RESOLUTION ACCEPTING THE FINAL PLAT OF ORCHARD HILLS – PHASE I,
PURSUANT TO O.S. TITLE 19 §868.8.
(A Single-Family Residential Subdivision)**

WHEREAS, the Oklahoma County Planning Commission, on December 18, 2025, approved the Final Plat of Orchard Hills – Phase I (FP-2025-13), a single-family residential subdivision containing 33 lots on 69 acres, more particularly described as follows:

A tract of land situated within the Northeast Quarter (NE/4) of Section Nine (9), Township Fourteen North (T14N), Range Four West (R4W), of the Indian Meridian (I.M.), Oklahoma County, Oklahoma, more particularly described by metes and bounds as follows:

BEGINNING at the Northeast corner of said NE/4; thence

S00°06'19"E along the East line of said NE/4 a distance of 1983.26 feet; thence

S89°11'27"W a distance of 663.58 feet; thence

S00°06'01"E a distance of 661.71 feet to a point on the South line of said NE/4; thence

S89°08'15"W along said South line a distance of 1275.00 feet; thence

N00°51'45"W a distance of 465.00 feet; thence

N42°55'06"E a distance of 595.00 feet; thence

N26°38'38"E a distance of 1255 feet; thence

N58°59'57"E a distance of 475.00 feet; thence

N00°38'47"W a distance of 400.00 feet; thence

N89°21'08"E a distance of 570.00 feet to the POINT OF BEGINNING. Said tract contains 3,021,032 Sq Ft or 69.35 Acres, more or less.

Location: NW 234th St. & MacArthur Blvd. (County Highway District #3)

And

WHEREAS, an irrevocable letter of credit (No. 829), executed on January 7, 2025, in the amount of \$87,940.00, was posted by First Bank and Trust Company to guarantee erosion control for a period of one (1) year after final approval of the subdivision.

And

WHEREAS, a maintenance bond (Bond No. 54265013) was posted as surety, executed December 20, 2024, in the amount of \$618,764.25 by First Water Contracting LLC to assure completion of paving improvements. This bond shall remain in effect for two (2) years following the final approval of the subdivision, provided that a construction entrance is used during the home construction process. If a construction entrance is not utilized, the bond will be extended for a period of ten (10) years.

And

NOW, THEREFORE, BE IT RESOLVED that the Board of County Commissioners hereby approves the Erosion Control and Paving Improvements Bond and authorizes the Final Plat of Orchard Hills – Phase I to be recorded.

The roads will be maintained by the County _____

The roads will not be maintained by the County. X

APPROVED:

**BOARD OF COUNTY COMMISSIONERS
OKLAHOMA COUNTY, OKLAHOMA**

Stacey Trumbo, P.E.,
County Engineer

Chairman

ATTEST:

Member

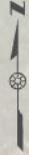
Maressa Treat
County Clerk

Member

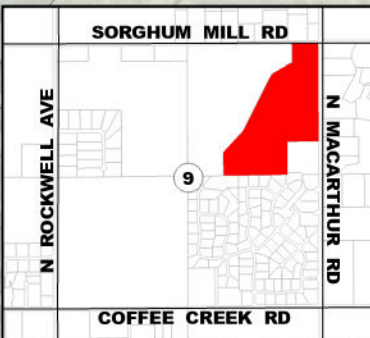
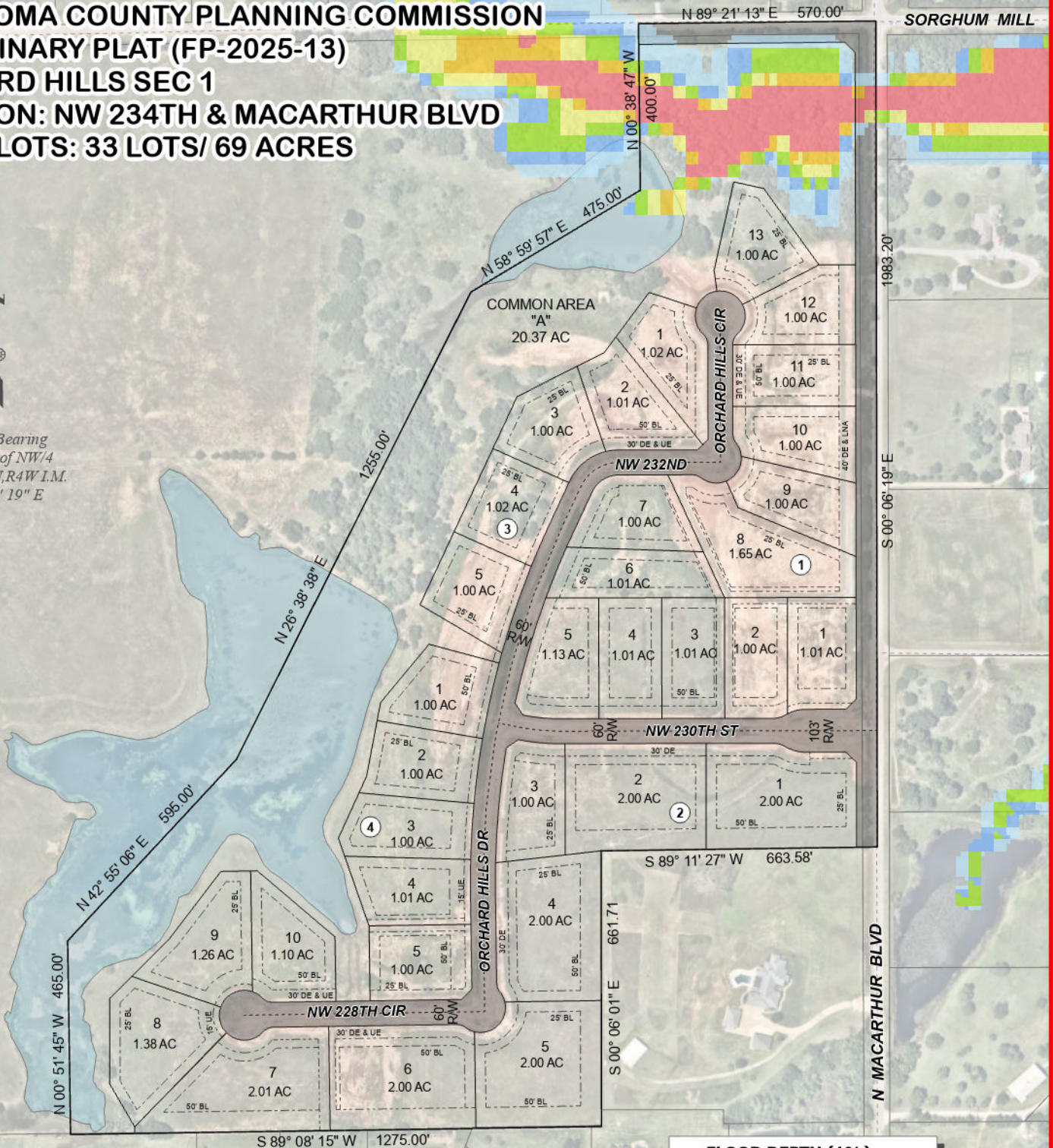
APPROVED as to form and legality this 22 day of Dec , 2025.

Assistant District Attorney

OKLAHOMA COUNTY PLANNING COMMISSION
PRELIMINARY PLAT (FP-2025-13)
ORCHARD HILLS SEC 1
LOCATION: NW 234TH & MACARTHUR BLVD
NO. OF LOTS: 33 LOTS/ 69 ACRES



*Basis of Bearing
 East Line of NW/4
 Sec 9, T14N,R4W I.M.
 S 00° 06' 19" E*



SECTION 9, T-14-N, R-4-W, I.M
LOCATION MAP



OKLAHOMA COUNTY
ENGINEERING & PLANNING

320 Robert S. Kerr, Suite 201
 Oklahoma City, OK 73102-3431
 County Engineer : Stacey Trumbo, P.E.

Date:
NOV 2025

Scale:
1" = 350'

Drawn By:
SCM